



EXP.NO.3

The Light Microscope and Cells & Tissues

investigating or examine objects that are too small to be seen by the naked eye
understanding the structure and function of cells and tissues

device and equipment :-

Light Source

Stage

Objective Lens

Eyepiece Lens

Condenser

How to work:-

1.turn the revolving turret.-:

2.place the microscope slide on stage and fasten it with stage clips

3-look through eye piece

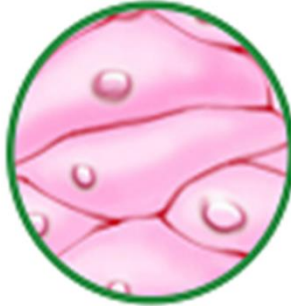
adjust the condenser and turn light

5.When finished, lower the stage, click the low power lens into position and remove the slide

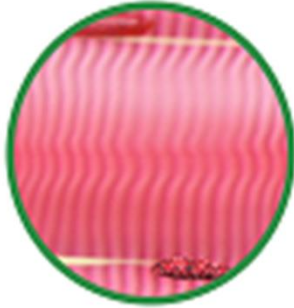
Stander result:



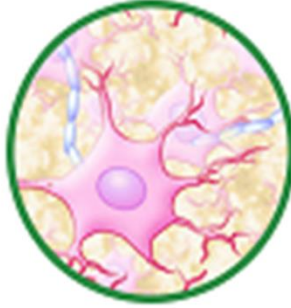
Connective Tissue



Epithelial Tissue



Muscle Tissue



Nervous Tissue

Discussions and conclusions:-

Understanding the structure and function of cells and tissues is crucial for understanding the human body. This knowledge is fundamental in many fields, including medicine, biology, and biomedical engineering

