



المادة: تطبيقات الحاسوب 3

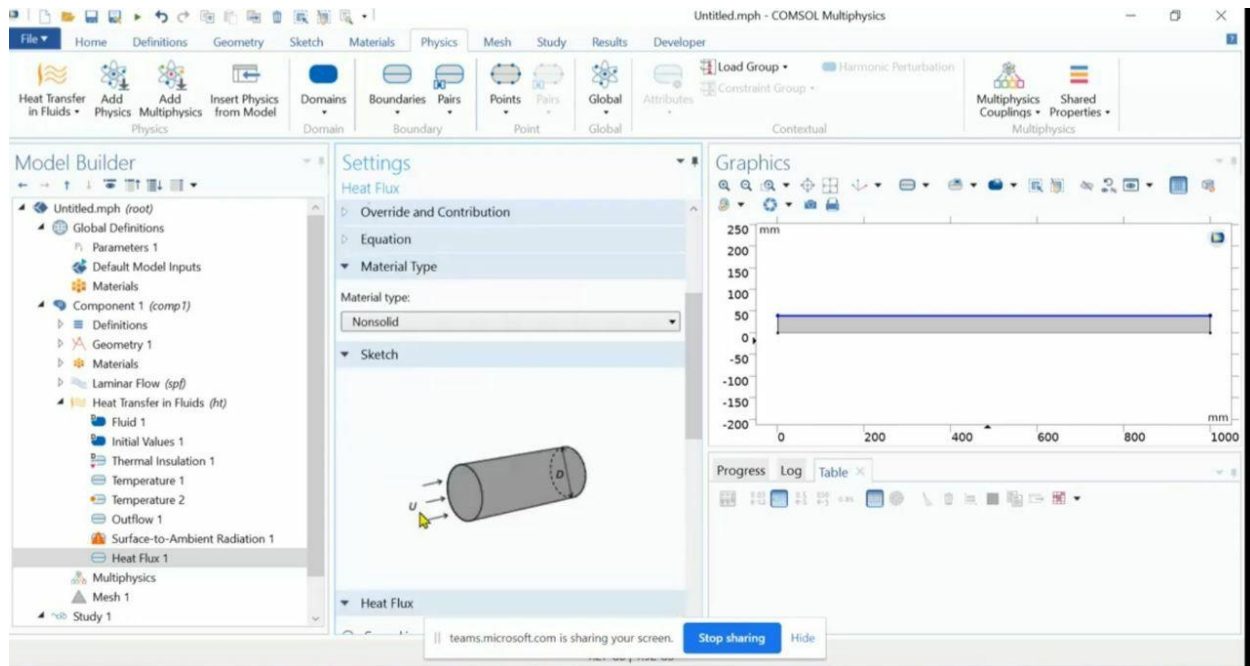
التدريسي: م.م. ابرار عبد الكريم سعيد

المرحلة: الثالثة

عنوان المحاضرة: المحاضرة الثالثة عشر

### Types of Boundary Condition:

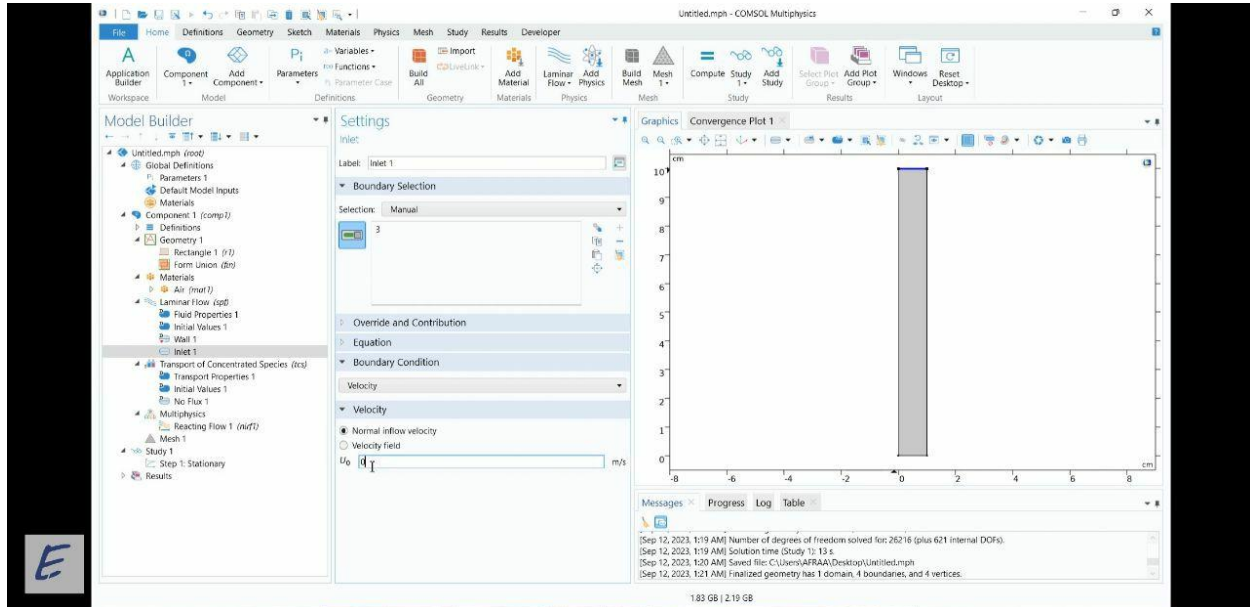
There are so many types of boundary condition depending on the type of the geometry that is being used, for example the heat flux boundary condition which is related to Heat transfer physics:



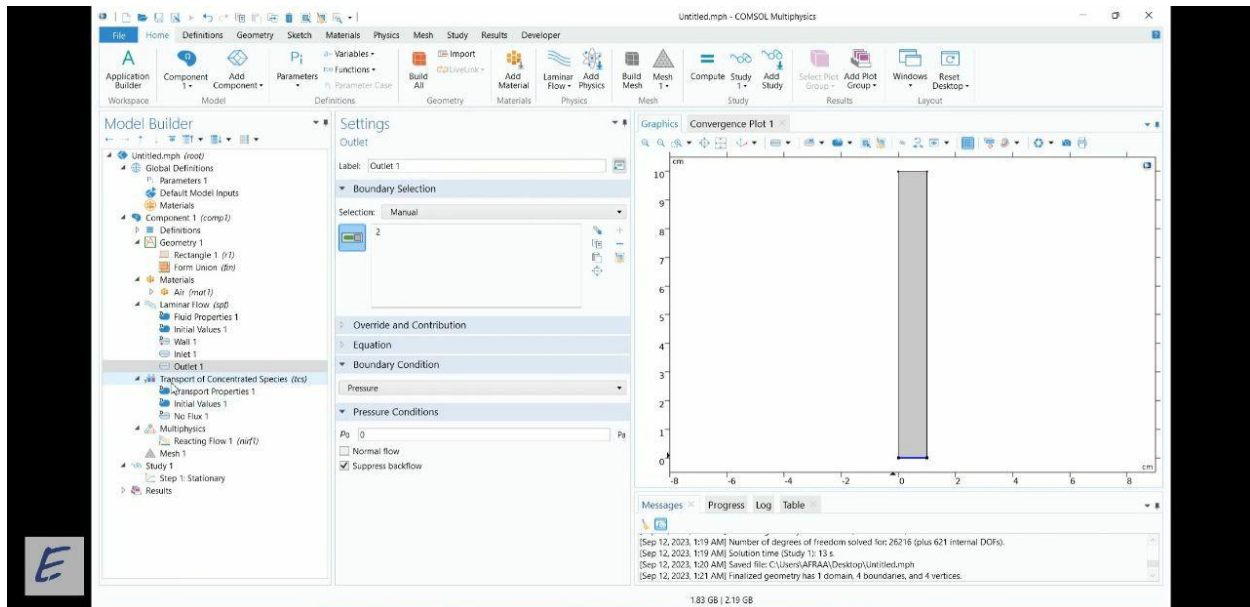
E-mail: [Abrar.Abdulkareem.Saeed@uomus.edu.iq](mailto:Abrar.Abdulkareem.Saeed@uomus.edu.iq)

The value of the heat flux can be inserted in a specific field.

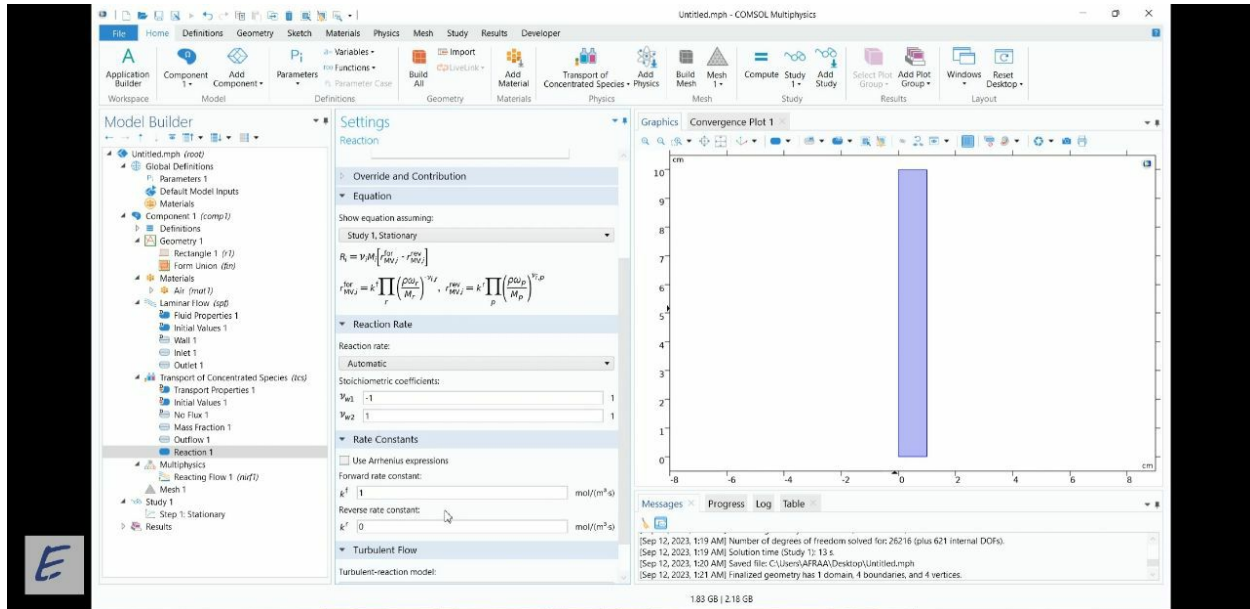
For fluid flow physics we have the inlet boundary condition:



And outlet boundary condition:



Also there is a Reaction boundary condition to describe a chemical reaction:



Choosing the physics is very important because it specifies the type of results that are going to be attained.