



المرحلة الثانية 2023-2024

Medical Terminology denote condition or state

Lecture : Three

- **Dr. Ali Hussein Al-Nasrawi**
- **Otorhinolaryngologist specialty**

Suffix: Singular vs. Plural

Greek

Singular Suffixes

- o -on
 - o Spermatozoon, ganglion
- o -ma
 - o Carcinoma, lipoma
- o -sis
 - o Crisis, prognosis
- o -nx
 - o Larynx, pharynx

Plural Suffixes

- o -a
 - o Spermatozoa, ganglia
- o -mata
 - o Carcinomata, lipomata
- o -ses
 - o Crises, prognoses
- o -ges
 - o Larynges, pharynges

Suffix: Singular vs. Plural

- *Latin*

- Singular Suffixes

- -a
 - Vertebra, conjunctiva
- -us
 - Bacillus, bronchus
- -um
 - Bacterium, ilium
- -is
 - Testis

- Plural Suffixes

- -ae
 - Vertebrae, conjunctivae
- -i
 - Bacilli, bronchi
- -a
 - Bacteria, ilia
- -es
 - Testes

Practice...

Singular:

- Sarcoma
- Diagnosis
- Phalanx
- Coccus
- Calcaneum
- Vertex
- Cervix
- thorax

Plural

- Sarcomata
- Diagnoses
- Phalanges
- Cocci
- Calcanea
- Vertices
- Cervices
- thoraces

Dermat/o = Skin

- ❑ -logy = (noun) Study of
- ❑ -logist = (noun) One who studies
- ❑ -logos = Greek for study
- ❑ Dermat/o/logist: The person who specializes in diseases of the skin
- ❑ Dermat/o/logy: The study of skin
- ❑ Eti/o/logy: Study of the origin of disease

Cyan/o = Blue, Blueness

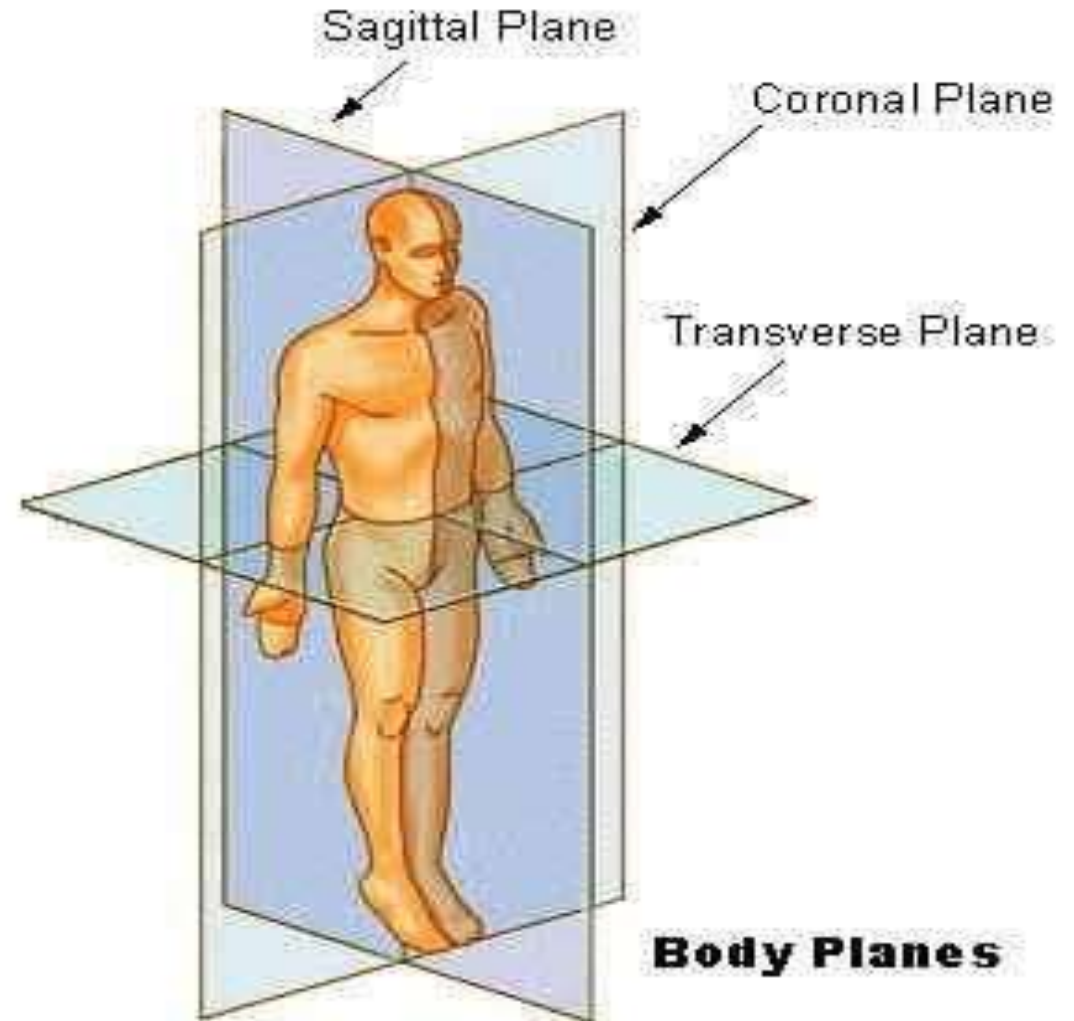
- Cyan/osis: (noun) Condition of blueness
- Cyan/otic: (adj.) Pertaining to a condition of blueness
 - **-tic** = adjective suffix for “pertaining to”
- Acr/o/cyan/osis: Blueness of the extremities
- Cyan/o/derma: Bluish discoloration of the skin

Abbreviation

- T_3 , T_4 ,
TSH
- TIA
- TSH
- Triiodothyronine, tetraiodothyronine TSH
(thyroid function tests)
- Transient ischemic attack
- Thyroid-stimulating hormone

Anatomic reference system

- Here is an example of body planes, so you can get a better idea.



Body Direction Terms

- ▶ The relative location of sections of the body, or of an organ can be described through the use of pairs of contrasting body direction terms.
- ▶ **Ventral**-front or belly side.
- ▶ **Dorsal**- refers to back of organ or body.
- ▶ **Anterior**-situated in the front.
- ▶ **Posterior**-situated in the back.
- ▶ **Superior**-upper most, above, or toward the head.
- ▶ **Inferior**- lowermost, below, or toward the feet.
- ▶ **Cephalic**-toward the head.
- ▶ **Caudal**-toward the lower part of the body.

Body Direction Terms

- **Proximal**- Situated nearest the midline or beginning.
- **Distal**- Situated farthest from the midline or beginning of the body structure.

- **Medial**- The direction toward or nearest the midline.
- **Lateral**- The direction toward or nearest the side and away from the midline.

Major Body Cavities

- The two major body cavities, which are the **dorsal** and **ventral** cavities, are spaces within the body that contain and protect internal organs.
- The dorsal cavity, which is located along the back of the body and head, contains organs of the nervous system that coordinate body functions and is divided into two portions.
- The **cranial cavity**, which is located within the skull, surrounds and protects the brain.
- Cranial means pertaining to the skull.
- The **spinal cavity**, which is located within the spinal column, surrounds and protects the spinal cord.

Pronunciation guidelines

- When a word ends in “i” it is pronounced like “eye” as in

Bacilli

- “x” is pronounced “z” as in

Xylocaine

Xenophobic

Pronunciation guidelines

When “P” is at the beginning of words followed by a consonant:

- “ph” is pronounced “f” as in
Pharmacy
- “pn” is pronounced “n” (silent “p”) as in
pneumonia, pneumococcus
- “ps” is pronounced “s” (silent “p”) as in
psychotic,
Psychosocial
psychologist

thank
you