



## **formed by**

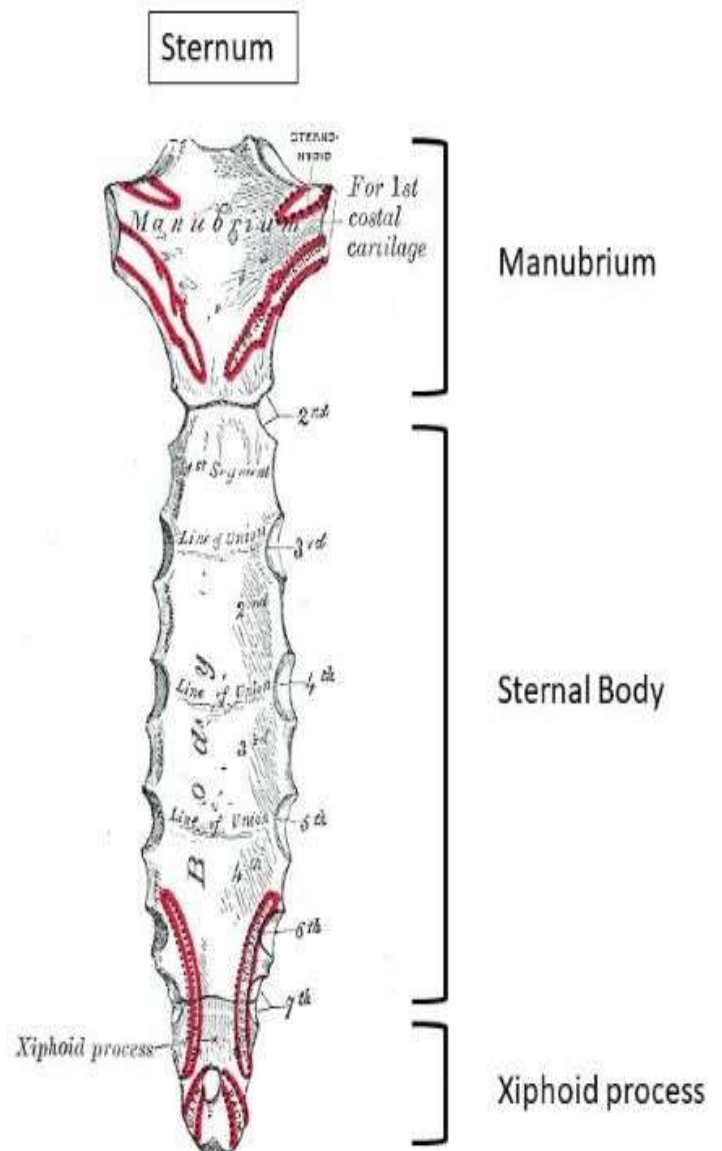
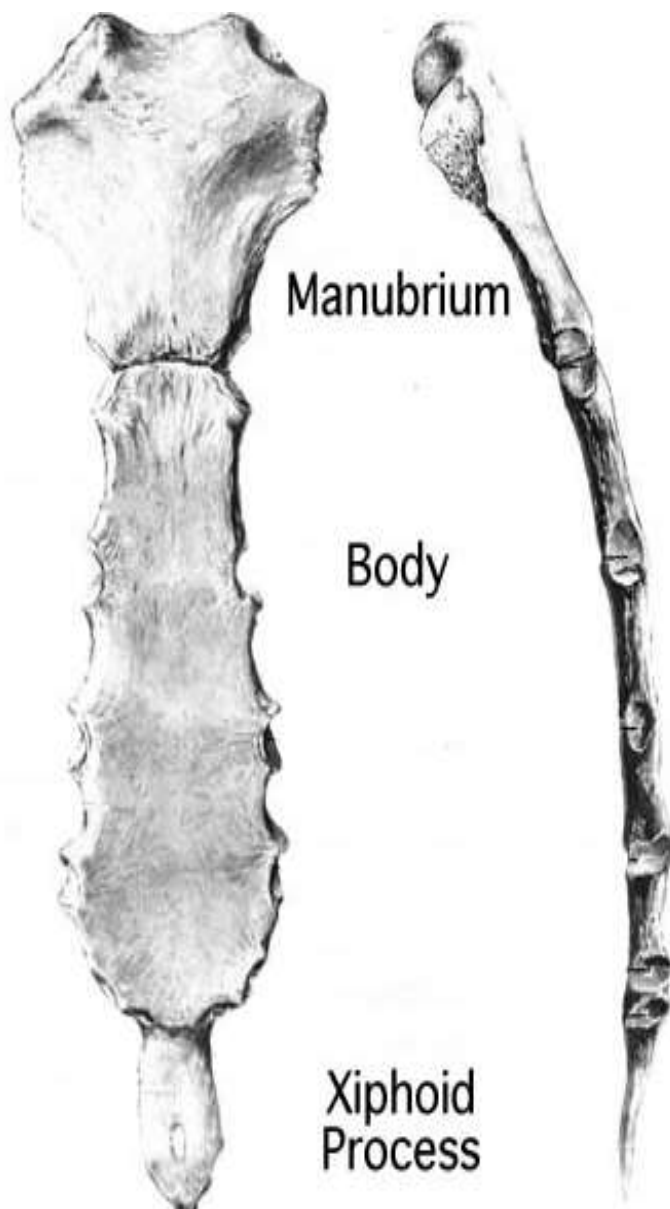
- the vertebral column behind
- the ribs
- intercostal spaces on either side
- the sternum
- costal cartilages in front.

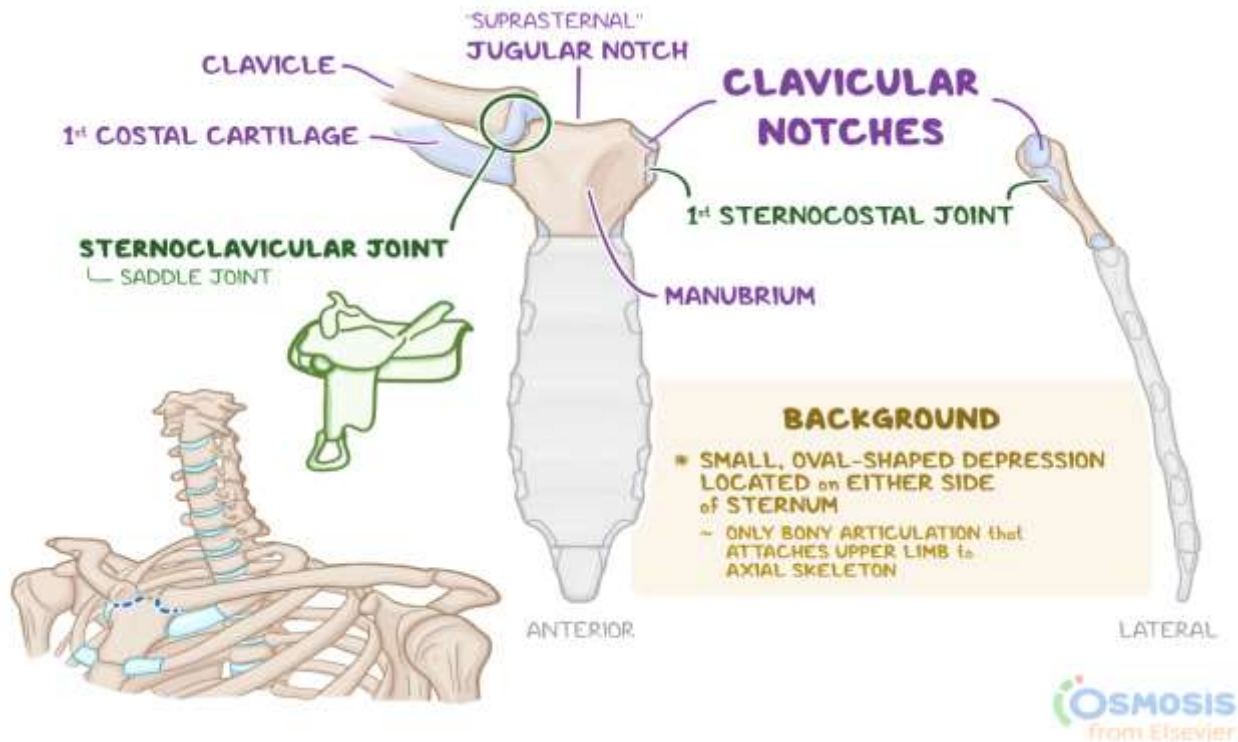


The cavity of the thorax can be divided into a median partition, called the mediastinum, and the laterally placed pleurae and lungs.

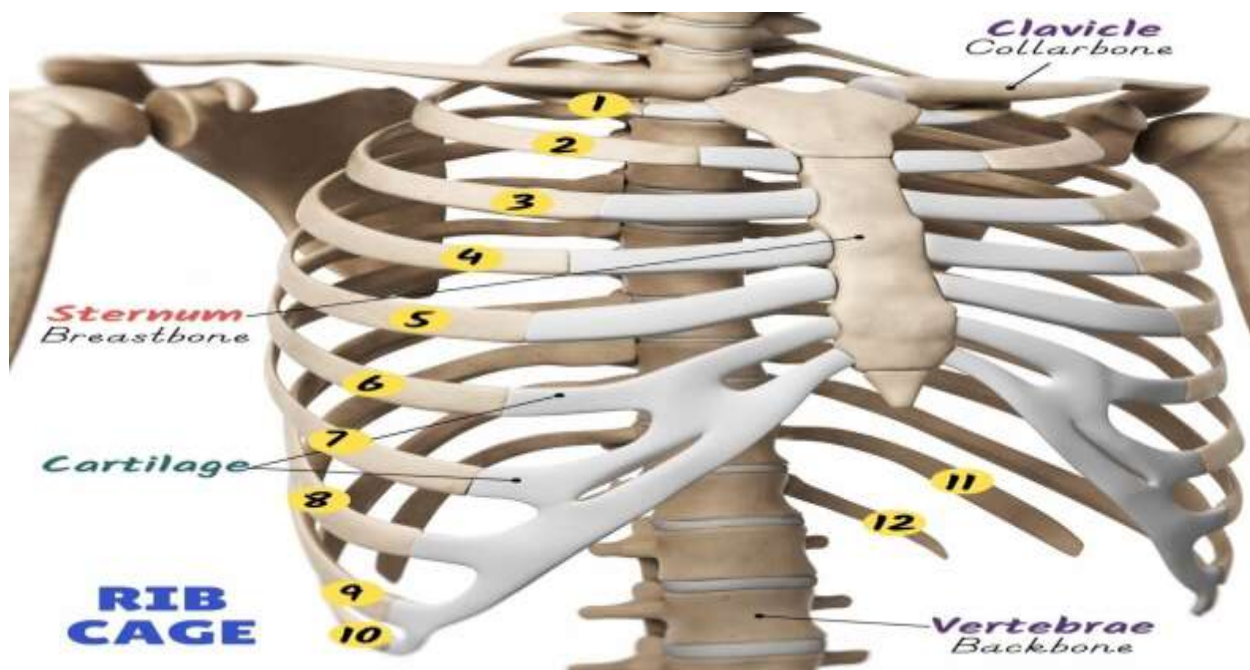


# Sternum





## Ribs

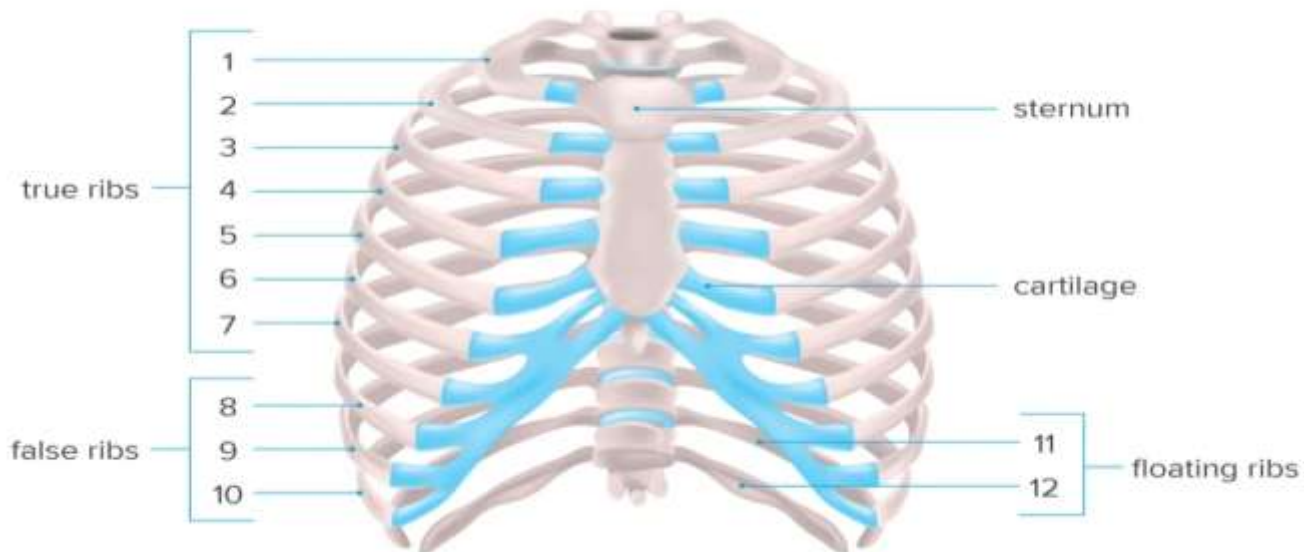




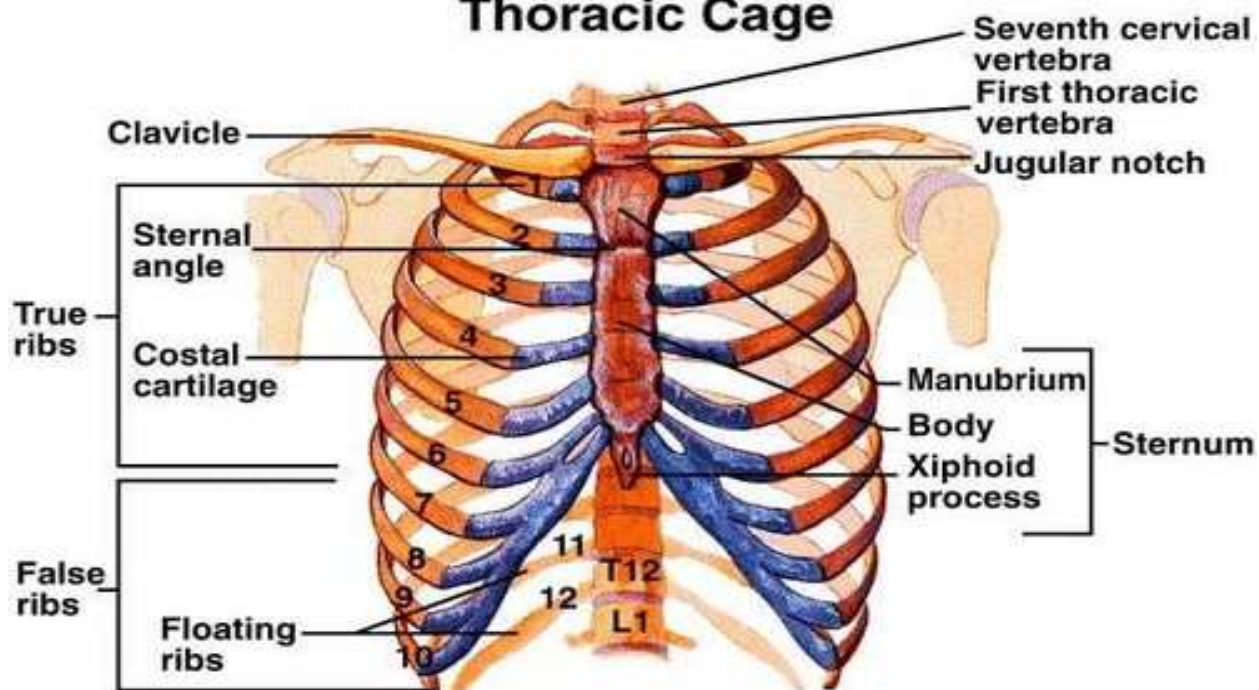


## Costal Cartilages

### Ribs Anatomy

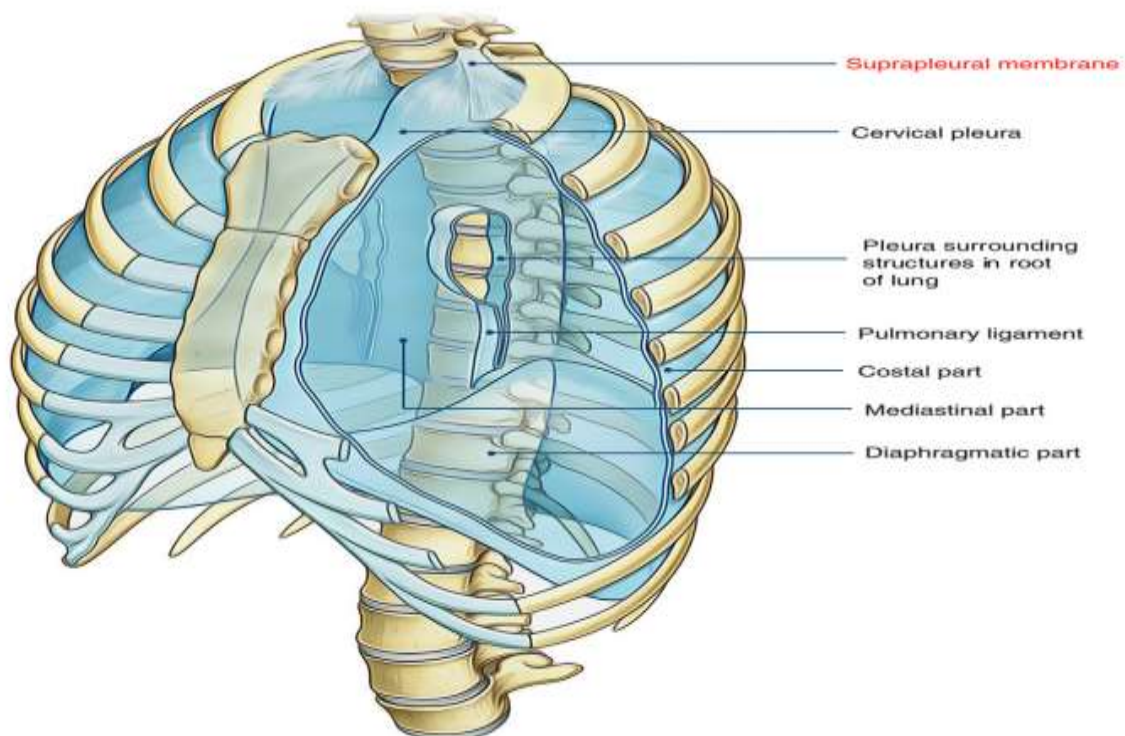
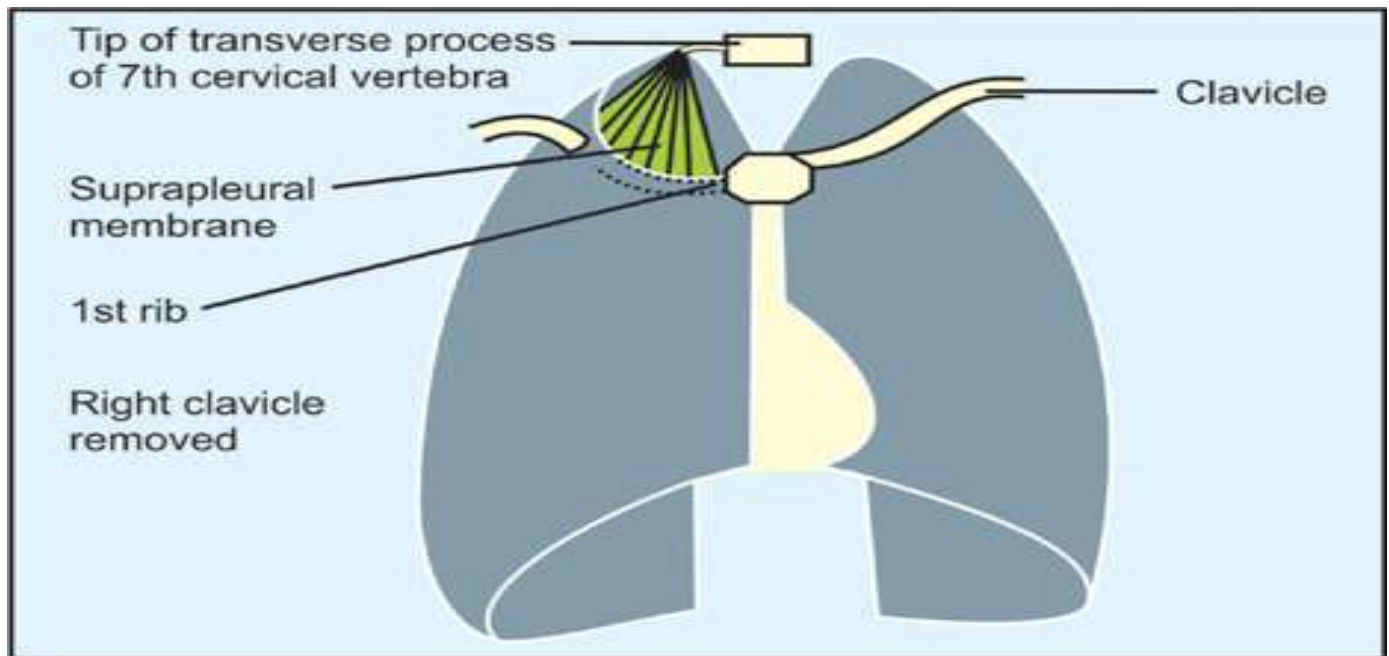


### Thoracic Cage



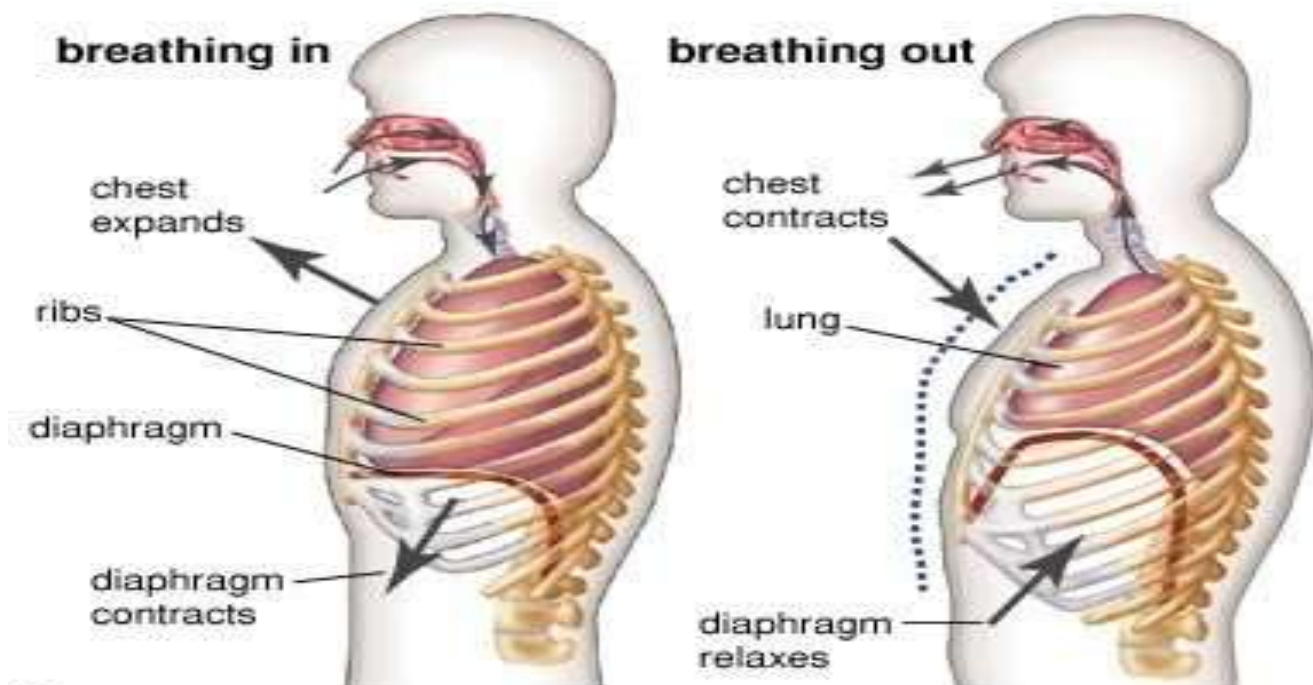
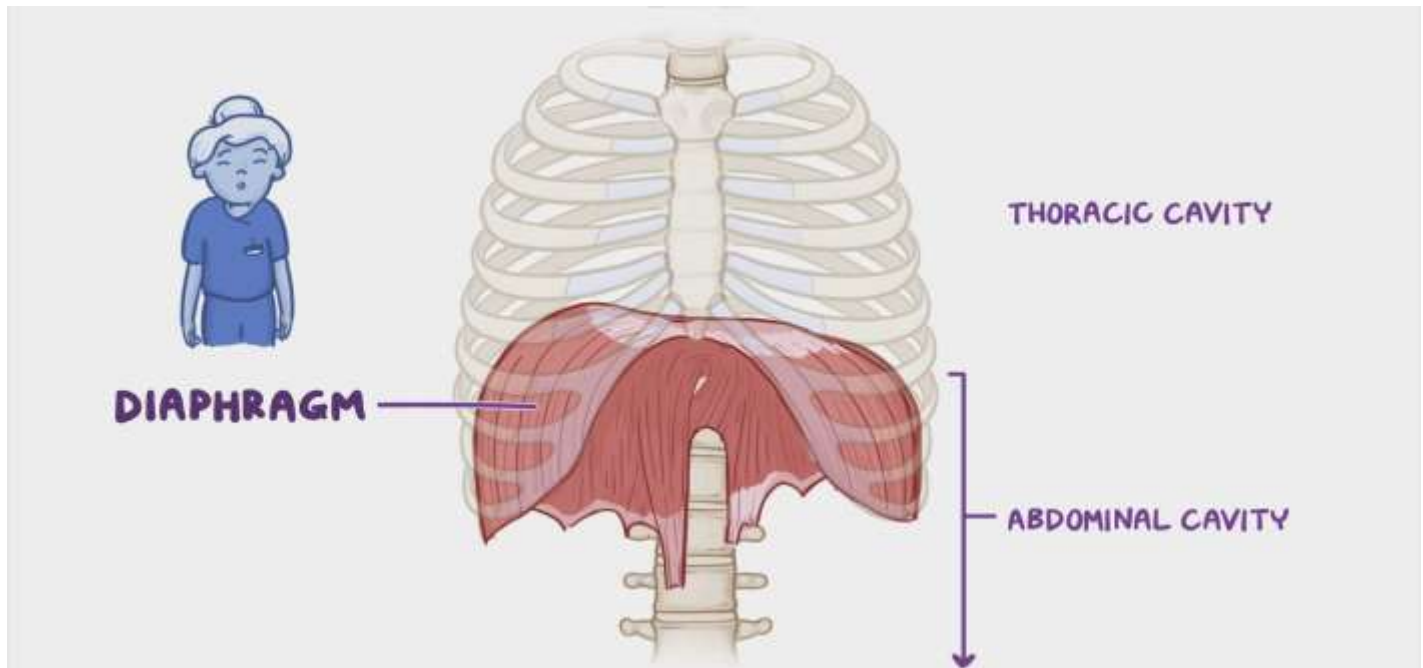


# Suprupleural Membrane





## Diaphragm

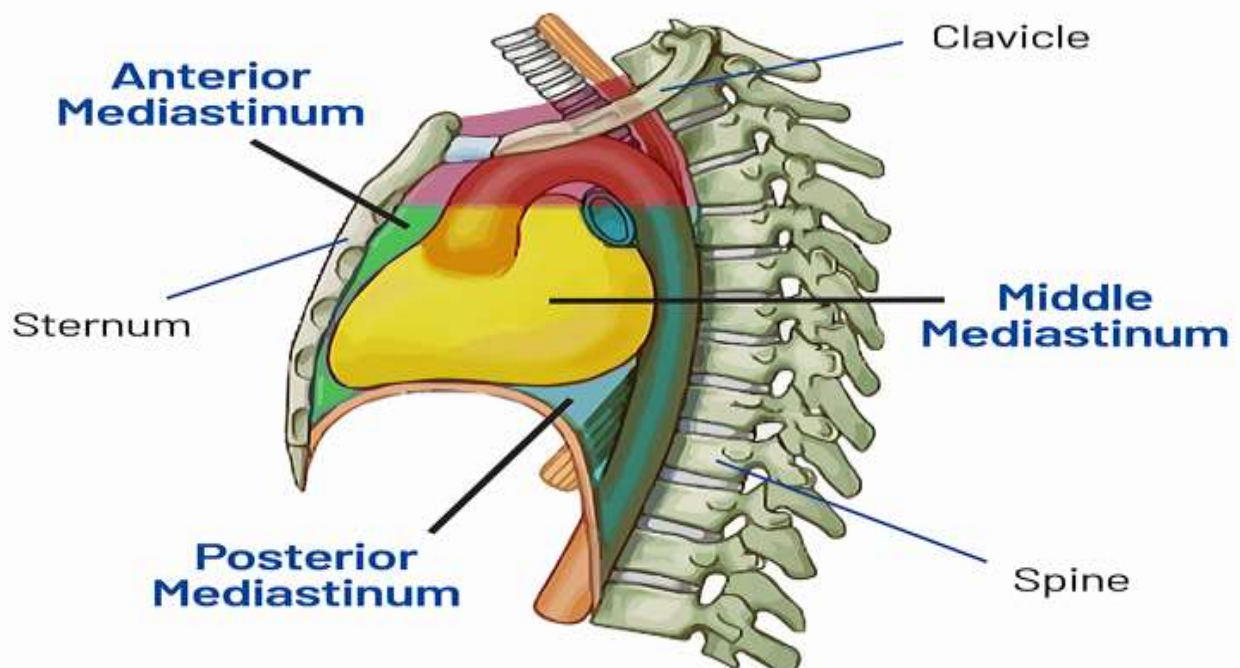
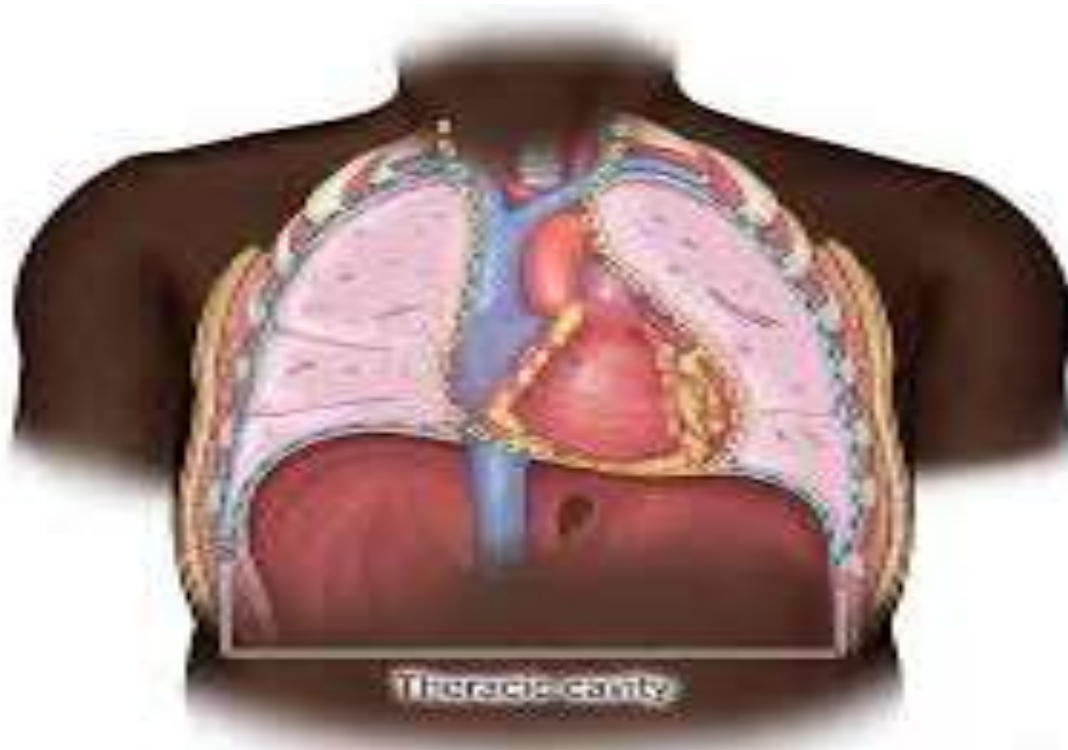


© 2006 Encyclopædia Britannica, Inc.



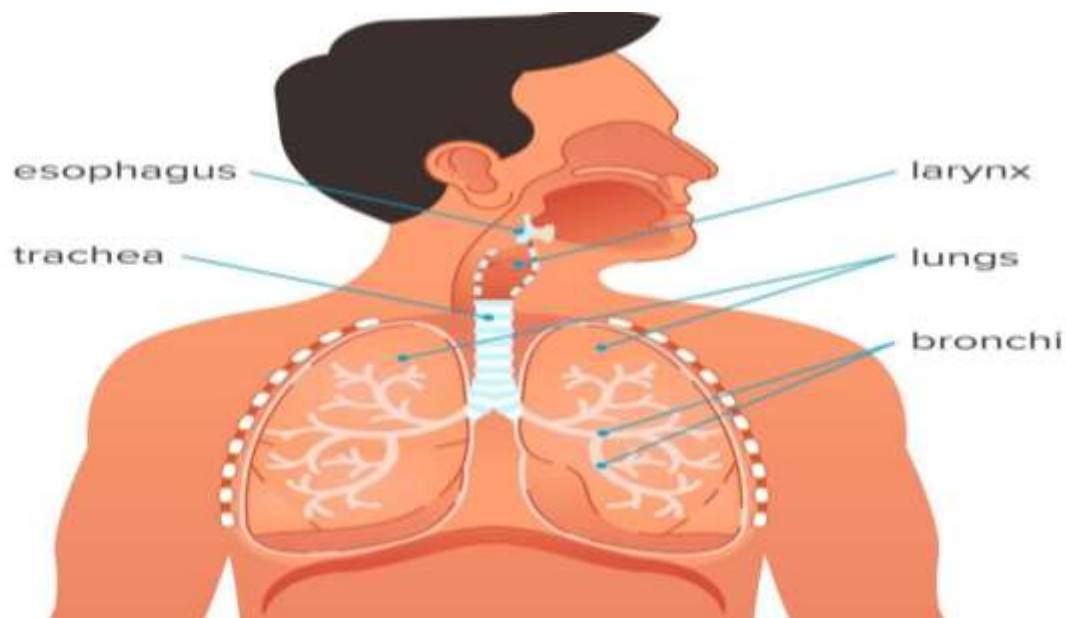


# Mediastinum

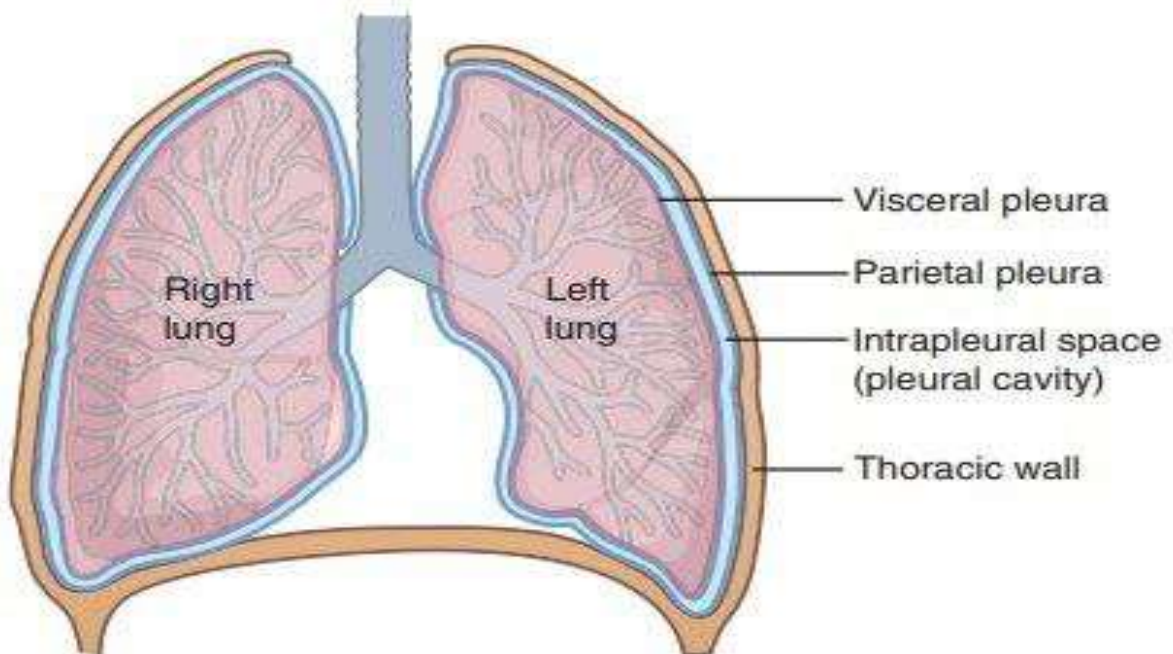




## Trachea



## Pleurae







## The Bronchi

