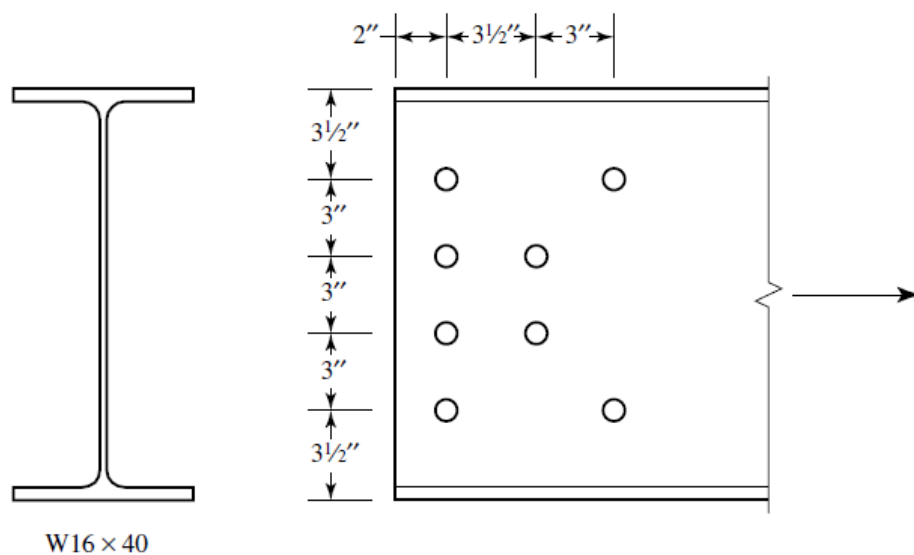


- 3.4-4** A992 steel is used for the tension member shown in Figure P3.4-4. The bolts are  $\frac{3}{4}$  inch in diameter. The connection is to a  $\frac{3}{8}$ -in.-thick gusset plate.
- Determine the nominal strength based on the gross area.
  - Determine the nominal strength based on the effective net area.

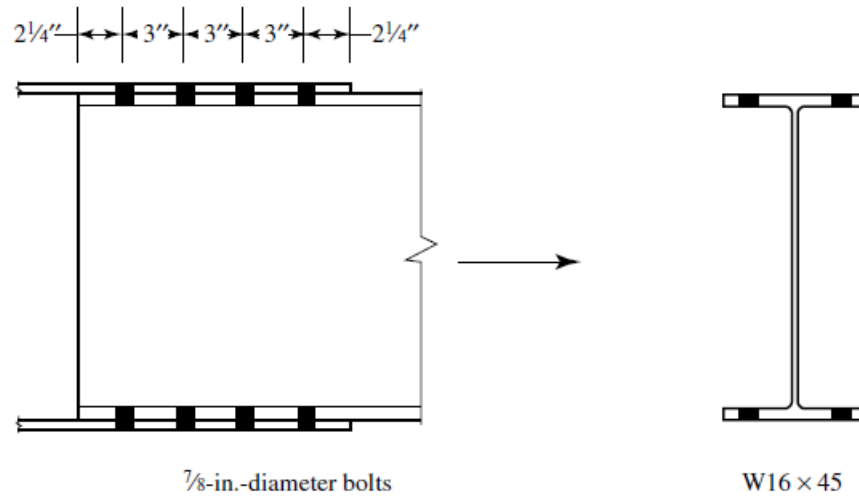
Visit For more Pdf's Books  
Pdfbooksforum.com

Chapter 3 Tension Members



**FIGURE P3.4-4**

- 3.3-5** A  $W16 \times 45$  of A992 steel is connected to a plate at each flange as shown in Figure P3.3-5. Determine the nominal strength *based on the net section* as follows:
- Use Equation 3.1 for the shear lag factor,  $U$ .
  - Use the alternative value of  $U$  from AISC Table D3.1.



**FIGURE P3.3-5**

Visit For more Pdf's Books  
Pdfbooksforum.com