

# \* Differential diagnosis of liver masses+ Trauma of the liver

Ultrasonography can effectively identify a liver mass of 5 mm and is valuable to differentiate cystic from solid lesions.

## A single solid mass in the liver

**haemangioma:** A solitary, well defined hyperechogenic mass close to the liver capsule.



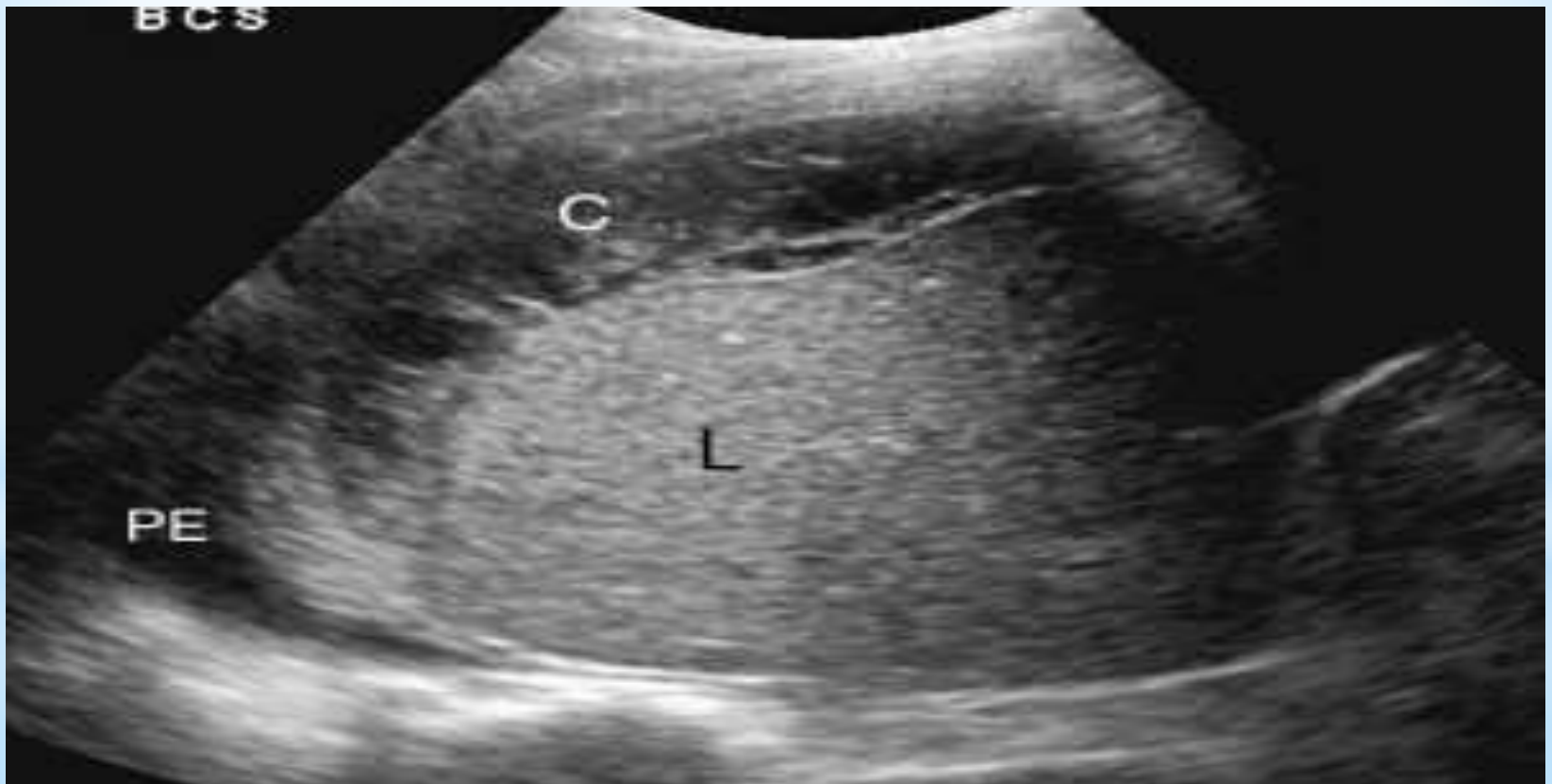
## \*Liver abscess

usually present as hypo echoic masses with thick walls, irregular outline and internal debris.



## Sub phrenic abscesses

crescent area between the liver and the hemi diaphragm due to a sub phrenic abscess.



## Sub hepatic abscess

usually present as hypo echoic masses with thick walls, irregular outline and internal debris inferior to the liver.



## \*Trauma to the liver

- \***Haematomas:** Sub capsular haematomas present as an complex area (due to blood clots) located between the capsule of the liver and the underlying liver parenchyma



Figure 2: B-mode ultrasound of a liver showing a subcapsular haematoma.



## Biloma

Biloma is a rare medical condition that occurs in 0.3% to 2.0% of cases . Its refer to intrahepatic bile collections

\*

