



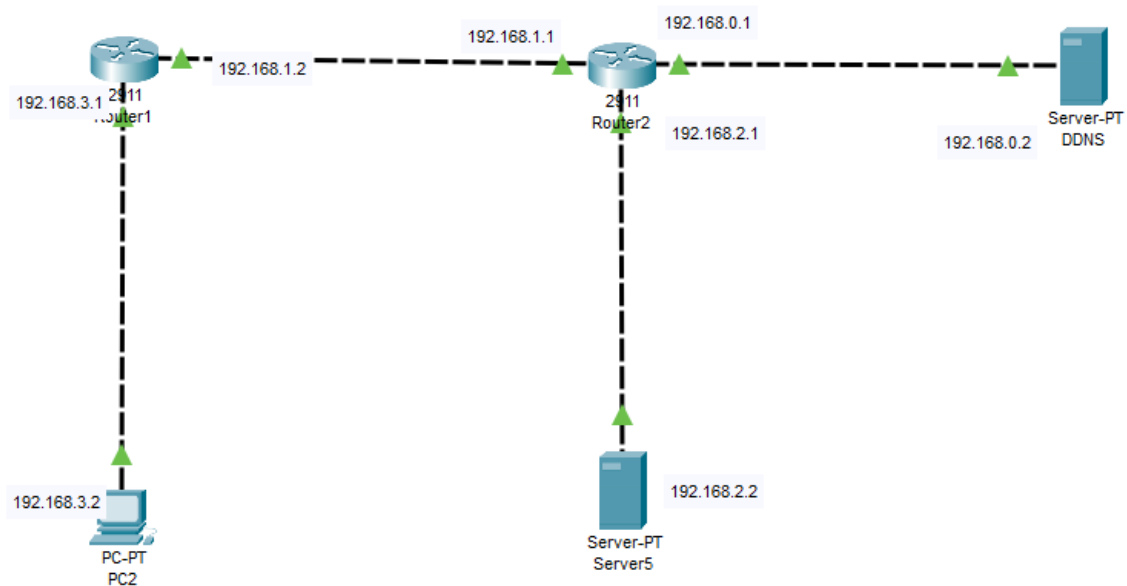
**Computer Techniques Engineering Department  
College of Engineering and Technology  
Al- Mustaqbal University**

---

**By : Bedoor Khudhair Shmeer**  
**Email : [bedoor.khudhair@uomus.edu.iq](mailto:bedoor.khudhair@uomus.edu.iq)**

## **DNS server configuration in Packet Tracer**

**A Domain Name Service(DNS)  
server resolves host names into IP addresses.  
Although we can  
access a network host using its IP address, DNS  
makes it easier by allowing us use domain  
names which are easier to remember**



PC2

Physical

Config

Desktop

Programming

Attributes

IP Configuration

X

Interface

FastEthernet0

IP Configuration

DHCP

Static

IPv4 Address

192.168.3.2

Subnet Mask

255.255.255.0

Default Gateway

192.168.3.1

DNS Server

192.168.0.2

IPv6 Configuration

Automatic

Static

IPv6 Address

/

Link Local Address

FE80::230:A3FF:FE68:E28D

Default Gateway

DNS Server

**SERVICES**

- HTTP
- DHCP
- DHCPv6
- TFTP
- DNS
- SYSLOG
- AAA
- NTP
- EMAIL
- FTP
- IoT
- VM Management
- Radius EAP

## HTTP

## HTTP

☒ On ☐ Off

## HTTPS

☒ On ☐ Off

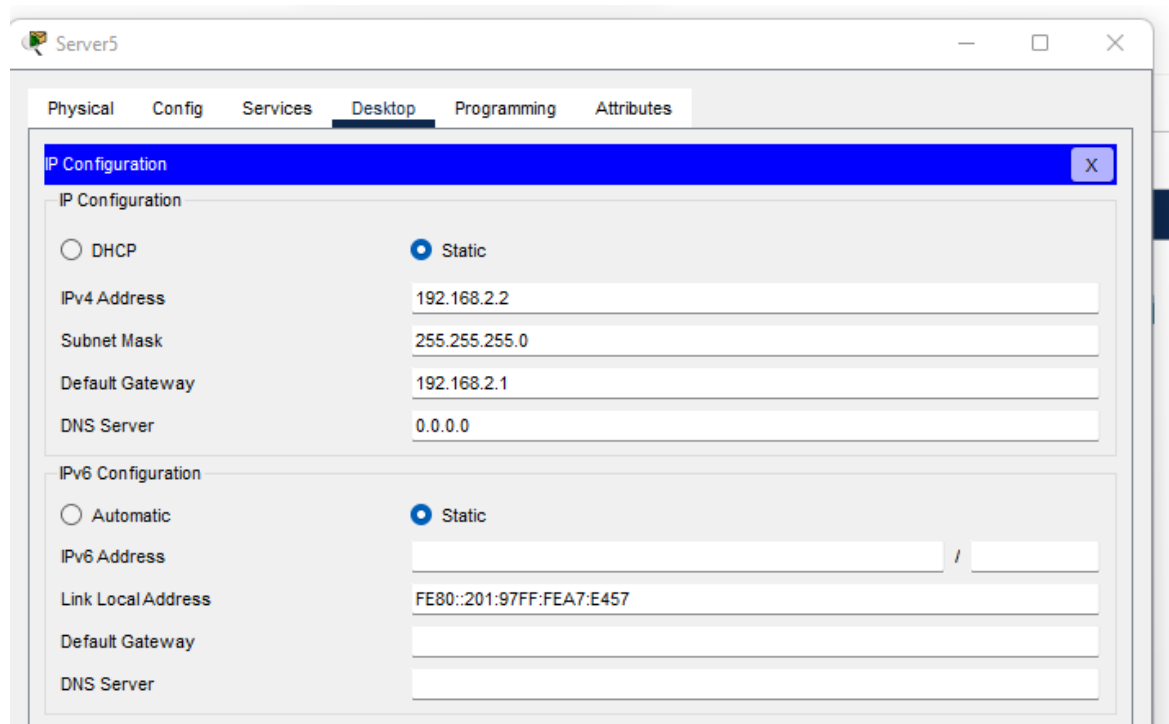
## File Manager

	File Name	Edit	Delete
1	copyrights.html	(edit)	(delete)
2	cscoptlogo177x111.jpg		(delete)
3	helloworld.html	(edit)	(delete)
4	image.html	(edit)	(delete)
5	index.html	(edit)	(delete)

New File

Import





**HOME WORK: Connect 3 router and dns server and http server and PC like figure1 , then use dns to translate the ip of http server into name can be reached by PC**

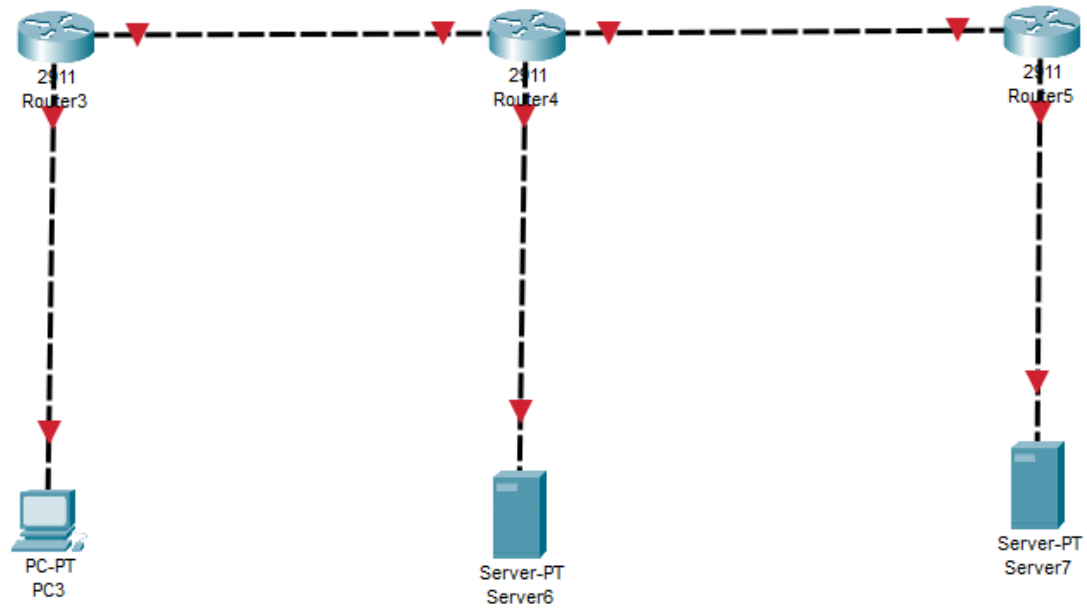


Figure1