

**Al-Mustaqbal University**  
**Science college**  
**Dep. Medical Physics**



## **Medical Physics**

**Second Stage**

**Lab1**

## **Computer 4**

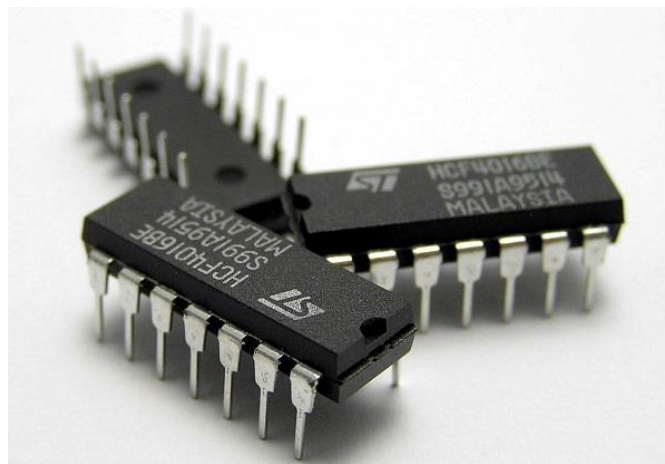
**MS.c Mortada Sabri**

**MS.c Noor Mohammed**

## Introduction

Previously, working on the manufacture of an electronic circuit to perform a specific function means building a complex electronic design of electronic components such as resistors, files, transistors ... etc.

Any change in part of electronic circuits meant a lot of complex processes such as welding and wire cutting, rethinking of electronic diagrams and many difficult things that took a long time. After the technological development, the integrated circuits (IC) were invented so that it was possible to put a complete electronic circuit on a small chip the size may be the size of a pinhead, even now it is estimated Nano meter, which cannot be seen only using special magnifiers.



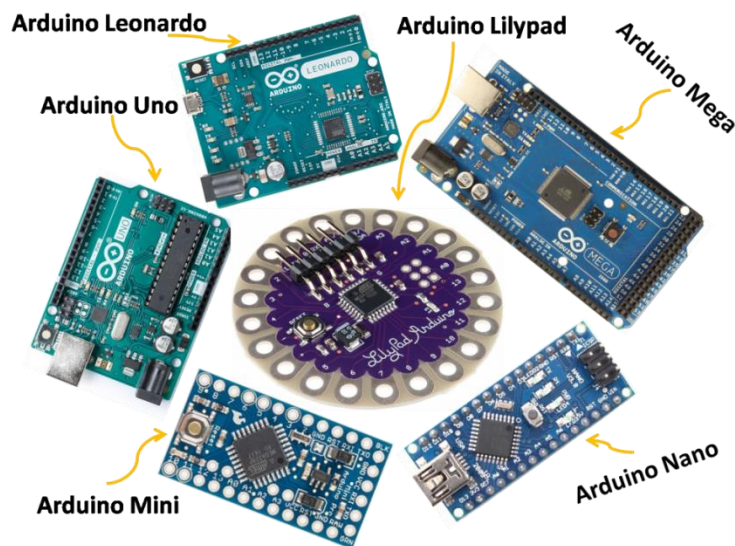
**Integrated circuits (IC)**

The development of integrated circuits led to the emergence of microcontrollers. Microcontrollers are a small computer that contains RAM and ROM, as well as an input and output unit that is from the pins of the microcontrollers.

## Arduino

Is an electronic development board that consists of an open-source electronic circuit with a microcontroller on a single board programmed by computer designed to make the use of interactive electronics in interdisciplinary projects easier.

Arduino is programmed by its own programming language called Arduino C that derived from C, C ++ and processing programming languages.



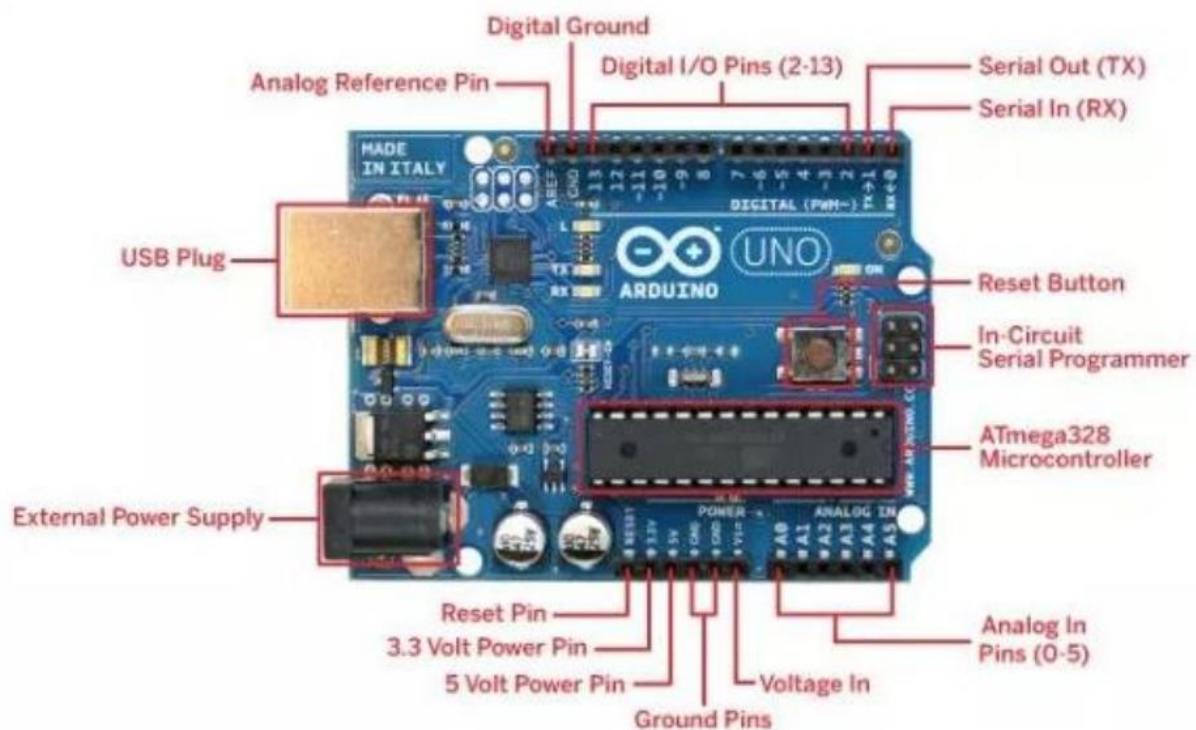
Microcontroller on different types of Arduino Board

### Why Arduino?

- Simplicity: Arduino is designed to suit everyone's needs in interactive electronics.
- Price: The Arduino is less expensive compared to other panels of the same type.
- Self-Assembly: You can download the Arduino data sheet free of charge from the official website and buy the pieces and assemble it yourself.

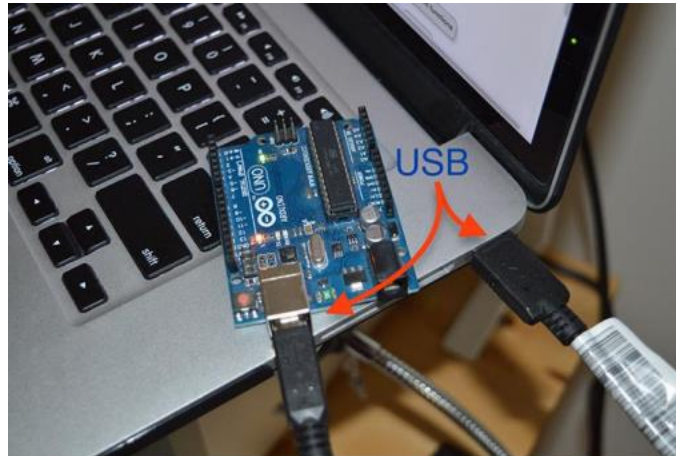
- Multi-platform: The program Arduino has the ability to work on Windows, Mac OS and Linux and most other electronic controls running on Windows only.
- Easy and simple programming environment: Programming Environment Designed to be easy for beginners, stable and powerful for professionals.
- Open Source Software: Available for all to download and programmers can modify it according to their needs.
- Open Source Hardware: Diagrams are published under license allowing circuit designers to design their own circuits.

### ***Components of Arduino:***

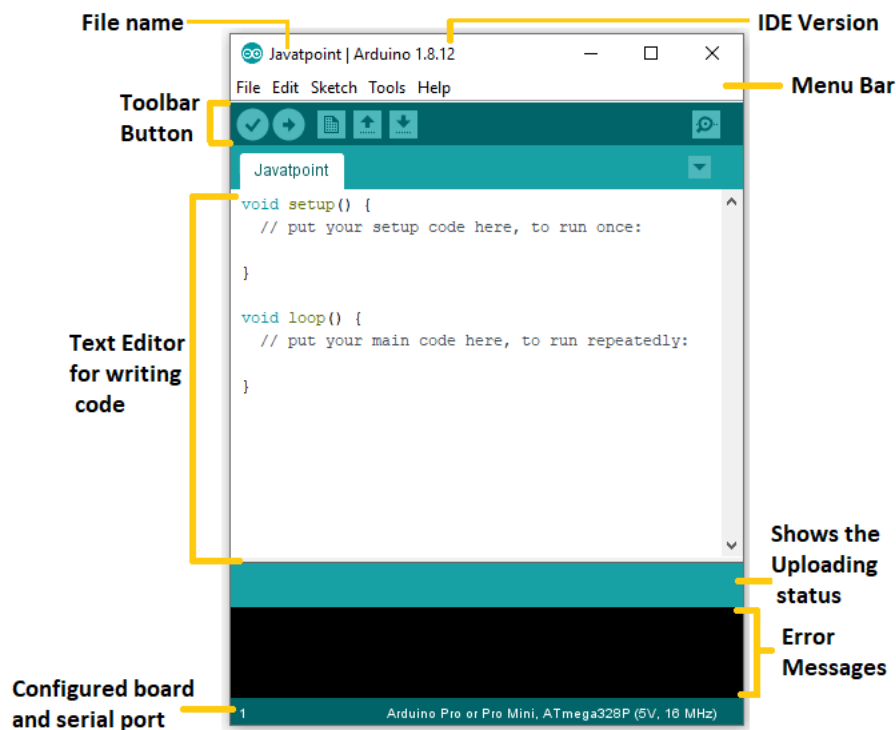


### Programming of Arduino:

We need to use a program called Arduino IDE (you can download it from [arduino.cc](http://arduino.cc)) and use the programming language Arduino C (derived from C, C++ and the processing language).



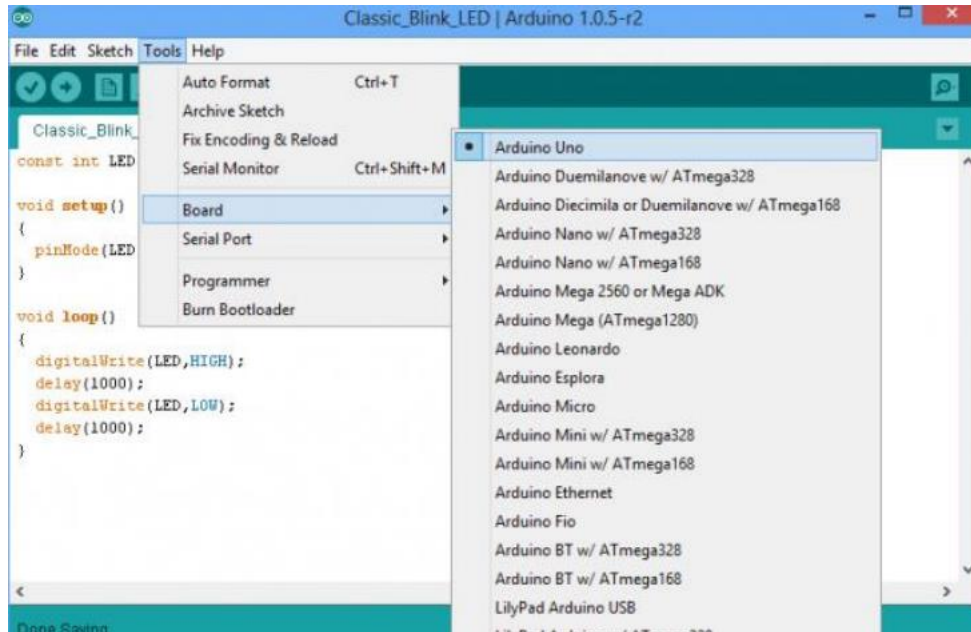
### Connect Arduino to pc



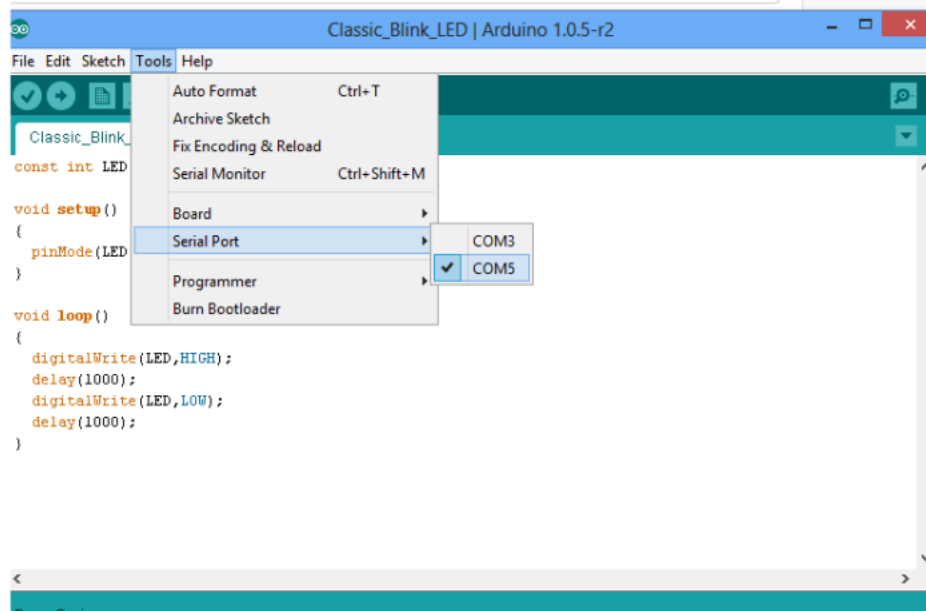
## Arduino IDE

The first two things that you need to set in Arduino program are:

- 1- Select the **Arduino Board** that you are going to use it by click on tools and then click Board:



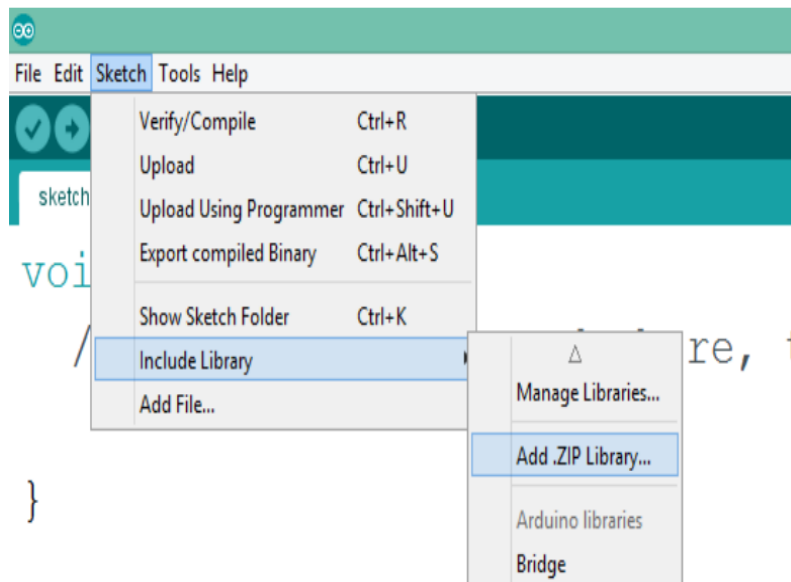
- 2- Choosing a **Serial Port** by click on tools and then click Serial Port:





Sometimes when working with some sensors you need to add a library in order to work, you can get libraries and download them to the fact that Arduino is open source (one of the most popular sites to download the library sites GitHub).

After downloading the library you can add it by clicking **Sketch**, then Include **Library** and **add .ZIP Library**.



You'll notice the emergence “**#include**”, which means that the library has been successfully added.



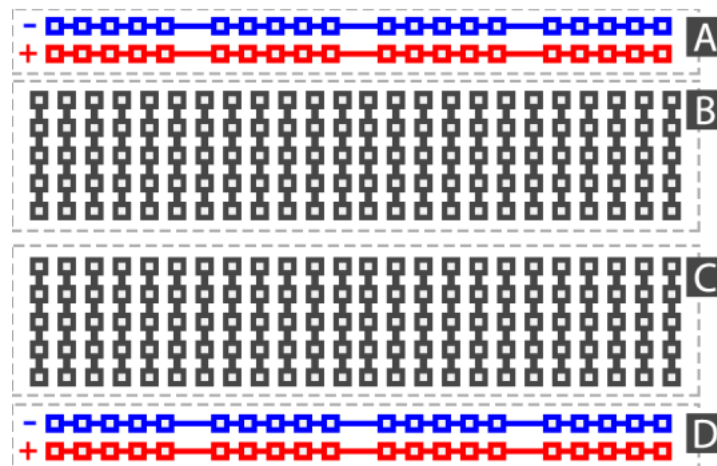
```
File Edit Sketch Tools Help
sketch_oct19a_6
#include <dht11.h>

void setup() {
  // put your setup code here, to run once:
```

### BreadBoard:

An important piece is used to connect the Arduino with other things associated with it by connecting wires.

The board is supplied by connecting it to the Arduino (the positive with voltage and the negative with the GND).



Part A&D Battery Connect to the voltage and GND from Arduino (Horizontally).

Part B&C to Connecting things with each other and with Arduino (vertically).



## Wires:

Used to connect things with each other and has three types:



Male-to-Male

Female-to-Female

Male-to-Female

## H.W

- ✚ Compare between microcontroller and microprocessor?
- ✚ What types of Arduino? And why did these species exist?

