

Anatomy

Lec. 2

Dr. Afrah Majeed

The Skull:

The skeleton of the head consist of the **skull** that consists of number of bones that attached to each other without movement except the lower jaw. The area at which the bones joined with each other called **sutures**. The bones of the head can be divided into two essential parts:

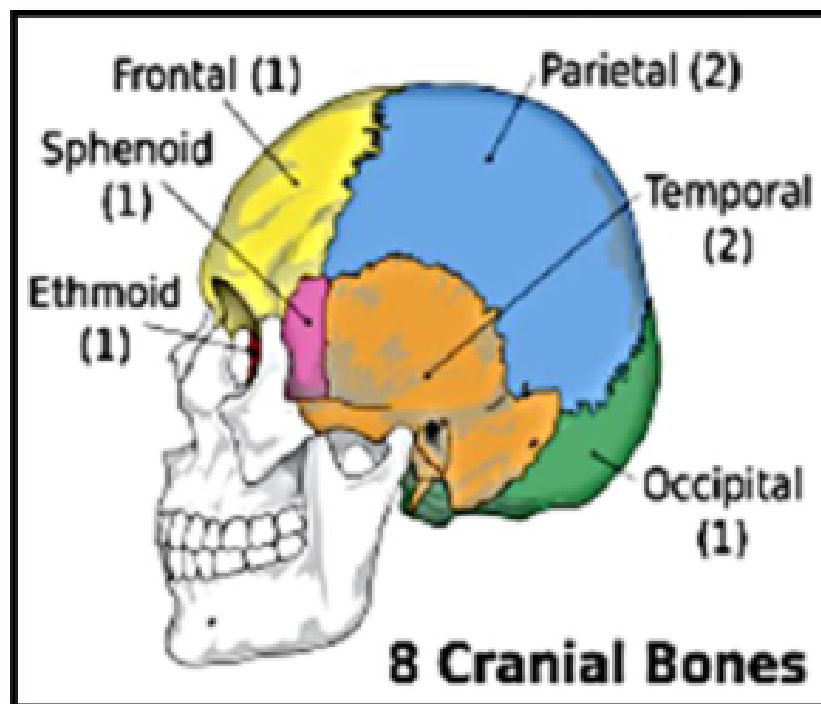
1.Cranium.

2.The skeleton of face.

1. **Cranium:** is the large bony box which encloses the brain inside, it has a base and vault (it has arched shape forms the roof of the skull).

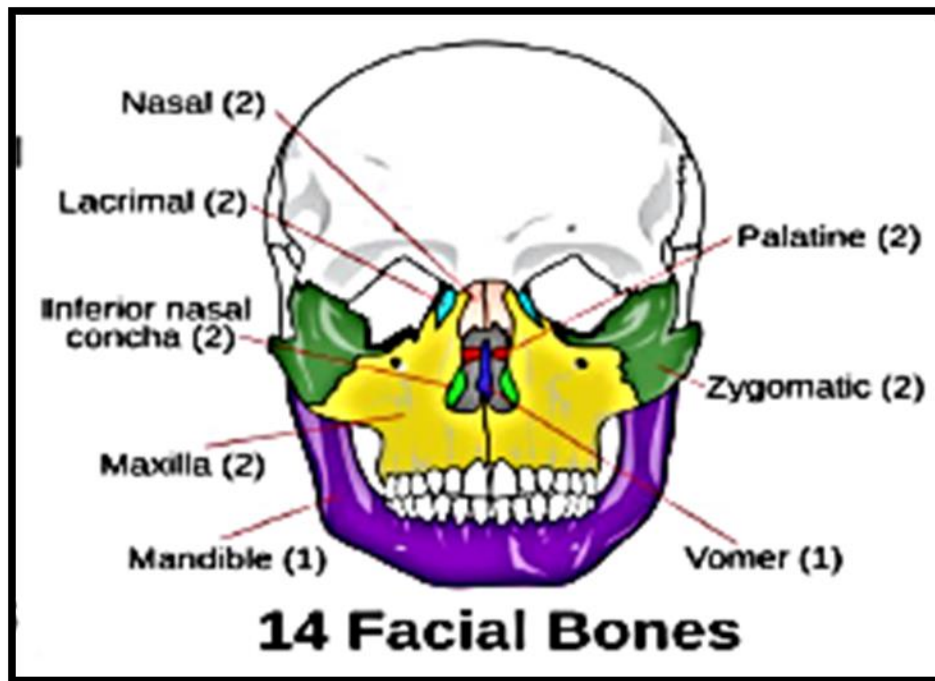
It composed of 8 bones (cranial bones):

1. **Frontal bone:** is one bone in anterior part of the cranium.
2. **Parietal bones:** are two bones in upper sides of the cranium.
3. **Temporal bones:** are two bones in lower sides of the cranium (ear region).
4. **Occipital bone:** is one bone in the posterior part of cranium.
5. **Ethmoid bone:** is one bone lies in the middle anterior part of the cranium.
6. **Sphenoid bone:** is one bone lies in middle.



2. The skeleton of face: It composed of **14** bones (facial bones) as following:

1. **Two Maxillary bones (maxilla).**
2. **Two zygomatic bones.**
3. **Two Lacrimal bones.**
4. **Two palatine bones.**
5. **Two inferior nasal conchae.**
6. **One vomer bone.**
7. **One mandibular bone (mandible).**

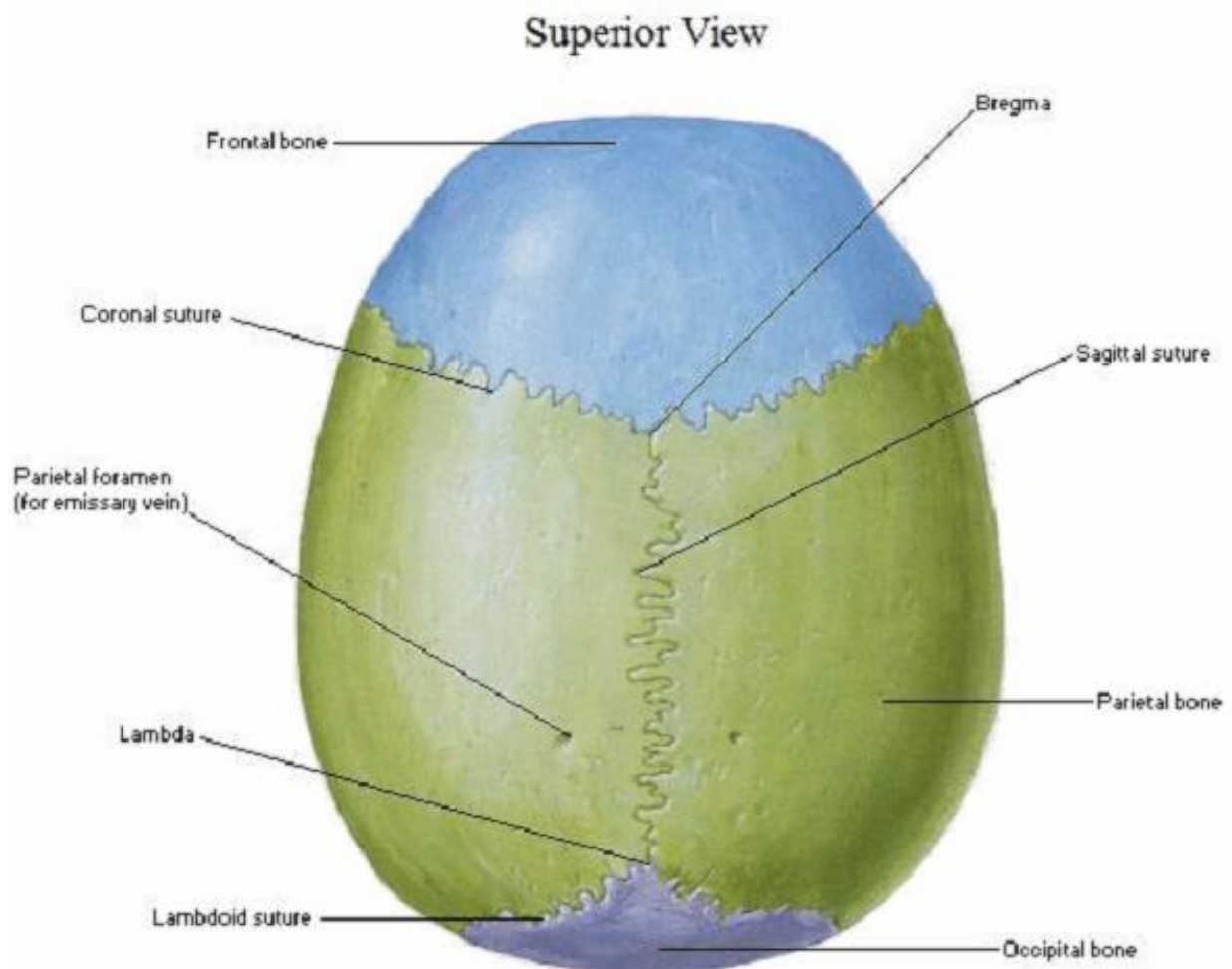


- Superior view of the skull:

- If we see the skull from the above we have the vault which is form the upper part of cranium
- there is **4** bones from the anterior to the posterior :
 1. Frontal bone (in front).
 2. Two parietal bones (right and left each sides).
 3. Occipital bones (behind).

These bones articulated by **3 sutures** are:

1. **Coronal suture:** this suture situated between the parietal bones and frontal bone.
2. **Sagittal suture:** this suture situated between the two parietal bones.
3. **Parieto-occipital suture (Lambdoid suture):** this suture situated between the parietal bones and occipital bone.



Frontal view of the skull (anterior view):

If we see the skull from the anterior we see facial bones from the upper to the lower:

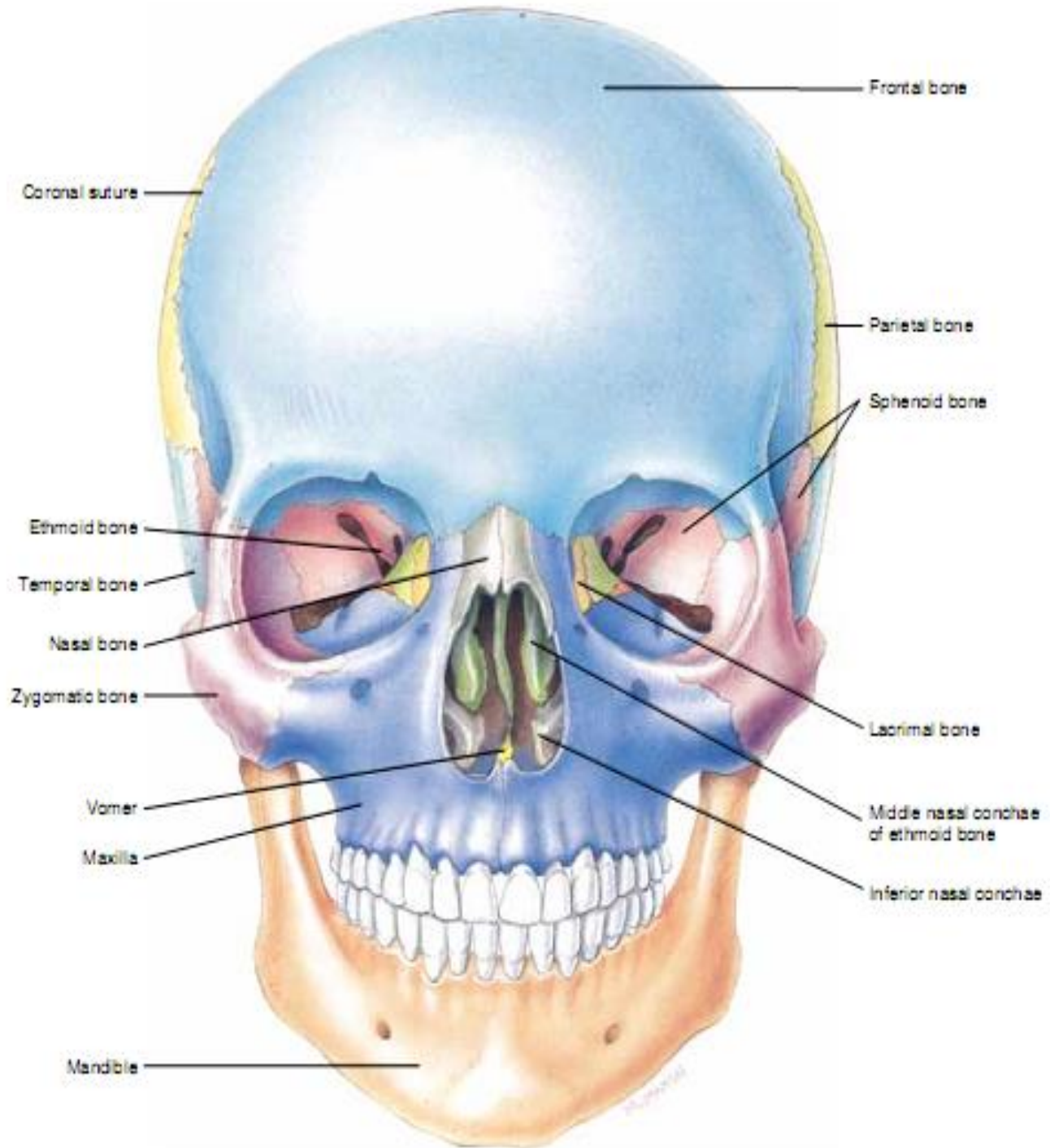
1. Frontal bone: form the forehead.
2. Two nasal bones with nasal cavity in the middle.
3. Lacrimal bones.
4. Zygomatic bones.
5. Maxillary bones: formed the upper jaw that carries the upper teeth.
6. Mandibular bone: formed the lower jaw that carries the lower teeth.
7. Part of the parietal bone.
8. Part of temporal bone.

Lateral view of the skull:

1. Squamous part of the temporal bone: in the middle.
2. Facial bones: anteriorly.
3. Parietal bone: superiorly.
4. Occipital bone: posteriorly.
5. Zygomatic arch: in the middle.
6. External auditory meatus.
7. Mastoid process.
8. Styloid process.

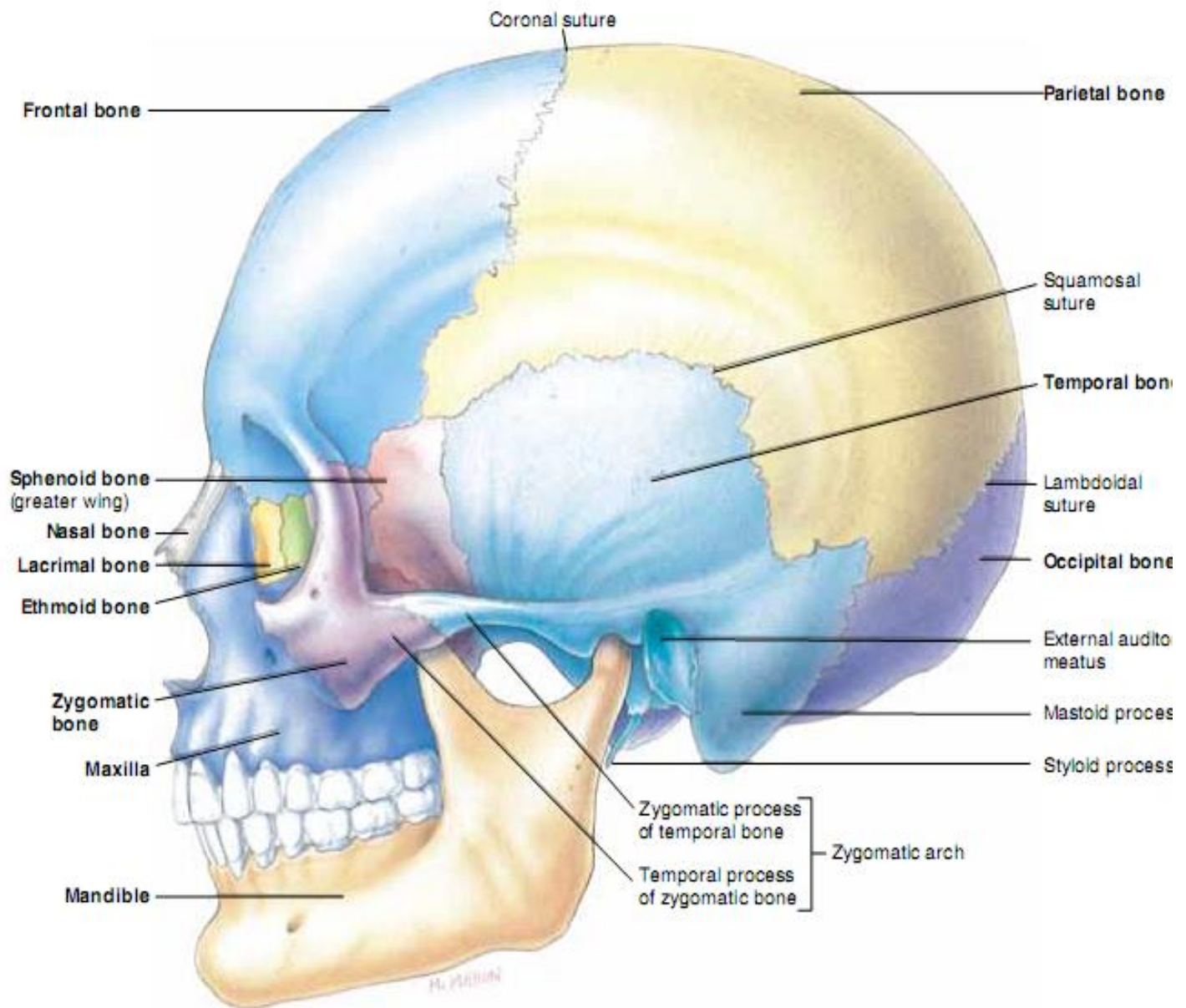
Posterior view of the skull:

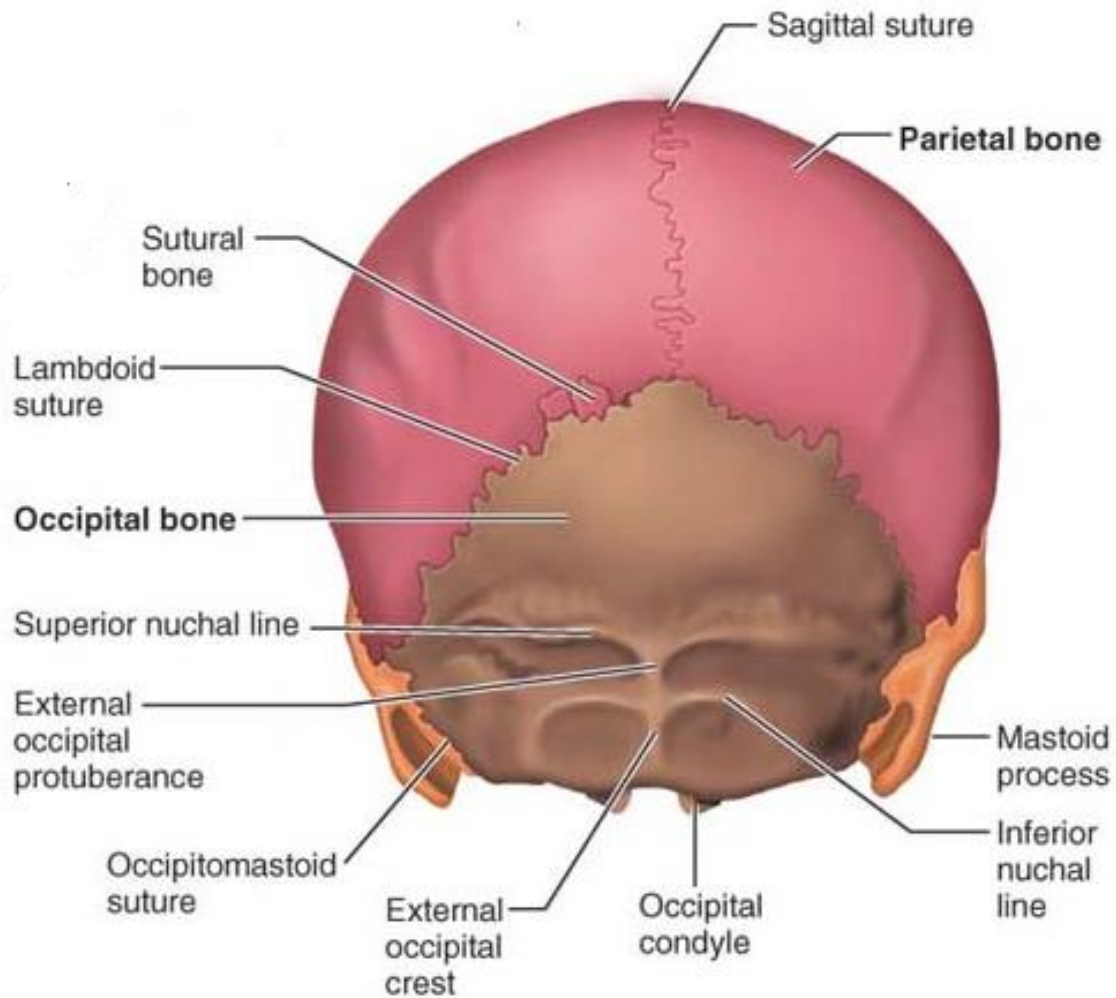
1. Large part of the occipital bone.
2. Parietal bones in the upper lateral part.
3. External occipital protuberance.
4. lambdoid suture.



Anterior view of the skull

Lateral view of the skull





Posterior view of the skull