

COLLEGE OF NURSING

The First STAGE

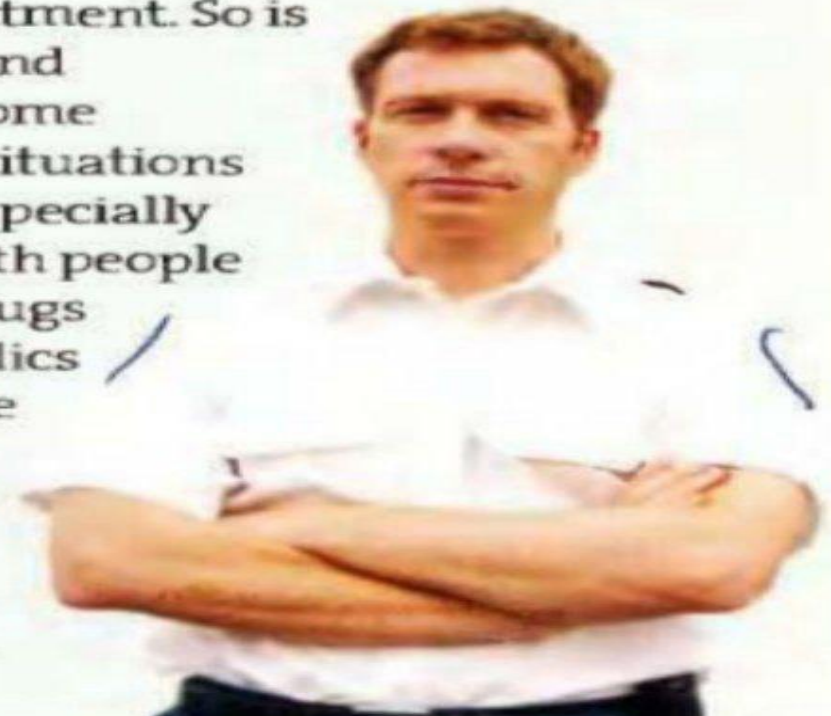
RAQIP ABBAS

Jeff Oliver

I'm Jeff Oliver. I'm 24 years old. I decided to become a paramedic when I saw two of them treating a driver at the scene of an accident when I was a boy.

I started as a trainee ambulance technician, and trained for two and a half years to become a qualified paramedic. Now I administer life-saving procedures myself. It's part of my everyday work to defibrillate the heart of a cardiac arrest, to apply splints to limbs and dress wounds, and to set up drips.

I have to make quick decisions – it's an important part of giving emergency treatment. So is communicating clearly and keeping a clear head in some difficult situations. And situations are often *very* difficult, especially when we have to deal with people under the influence of drugs and alcohol. But paramedics don't think twice – we are always first at the scene when there is a suicide, a road accident, or a fire. When you save a life, it's the best job in the world.



2 Join these word combinations used in the text.

1 become

a a life

f 2 deal with

b as a trainee

d 3 give

c a qualified paramedic

R 4 make

d treatment

a 5 save

e people

b 6 start

f decisions

Read about left Oliver and answer the questions.

1-When did Jeff decide to become a paramedic ?

-- When he was a boy .

2- How long did he train for the job?

--Two and a half years .

3- what things do you have to be good at do Jeff's job ?

--Making quick decision , communicate Clearly and keeping a clear head in some difficult situation .

4- Who makes Jeff's job difficult?

--people under the influence of drugs and alcohol .

Read about the signs and symptoms of shock, and complete them with words below.

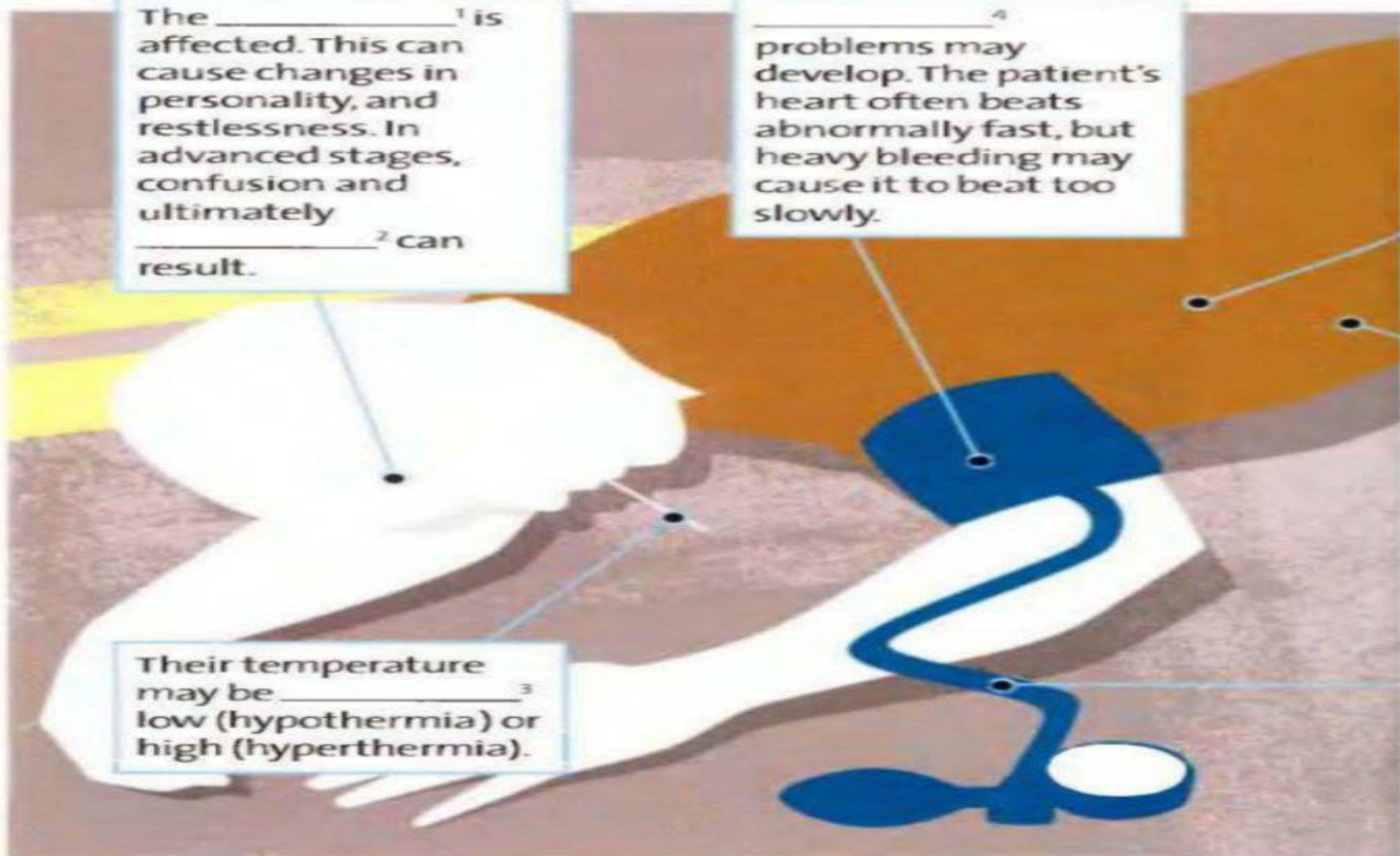
dangerously
abdominal
respiratory
abnormally
gastrointestinal

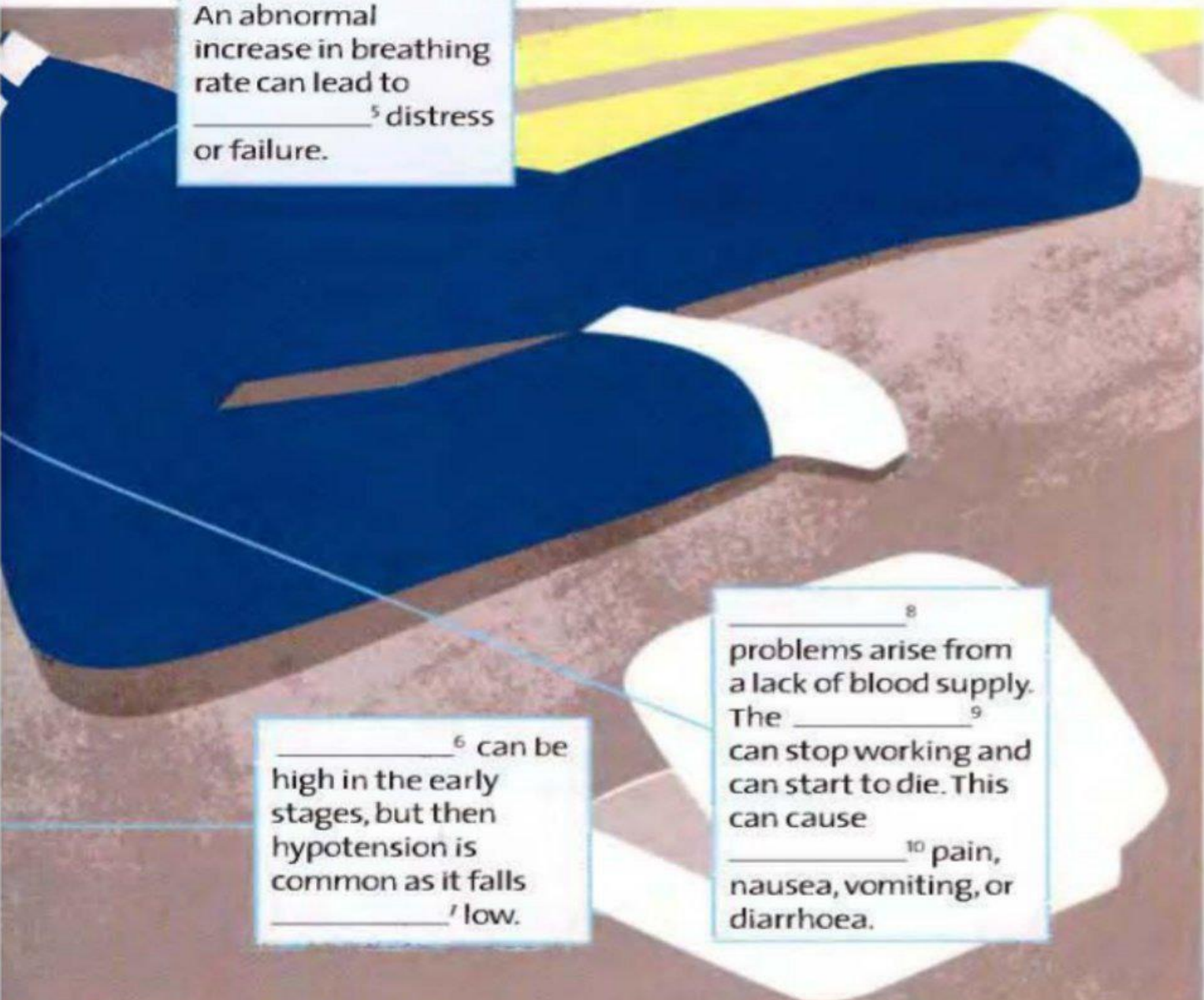
blood pressure
cardiovascular
intestines
coma
central nervous system

The _____¹ is affected. This can cause changes in personality, and restlessness. In advanced stages, confusion and ultimately _____² can result.

_____⁴ problems may develop. The patient's heart often beats abnormally fast, but heavy bleeding may cause it to beat too slowly.

Their temperature may be _____³ low (hypothermia) or high (hyperthermia).





An abnormal increase in breathing rate can lead to _____⁵ distress or failure.

_____⁶ can be high in the early stages, but then hypotension is common as it falls _____⁷ low.

_____⁸ problems arise from a lack of blood supply. The _____⁹ can stop working and can start to die. This can cause _____¹⁰ pain, nausea, vomiting, or diarrhoea.

Tr
CF
di
dr
hy
st
st
sw
tw

Lo
wo

1_ central nervous system

2_ coma

3_ dangerously

4_ cardiovascular

5_ respiratory

6_ blood pressure

7_ abnormally

8_ gastrointestinal

9_ intestines

10_ abdominal