



Faculty of Science



Department of Medical Technology

((General plant sciences))

1st stage

Lab (5)

Plant Internal structures (Plant anatomy)

By

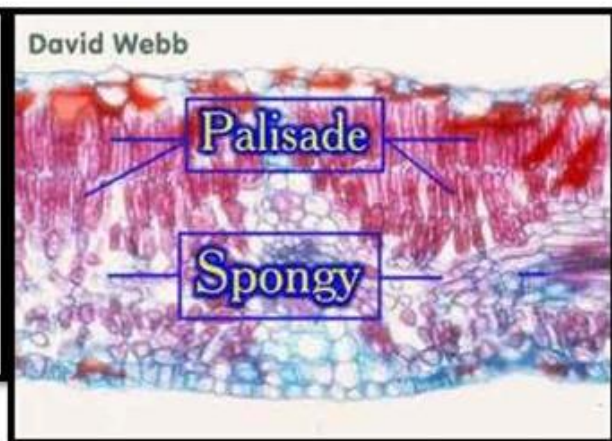
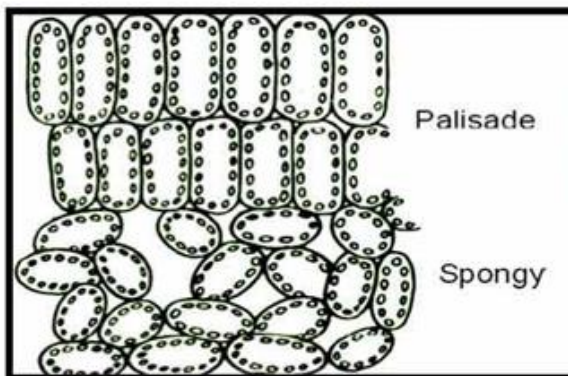
Mm. Ali Al-Awadi

Lab 5: Plant internal structures (plant anatomy)

- 1- *Ligustrm* leaf A.S. (Parenchyma tissue)
- 2- *Sambucus* stem C.S (Collenchyma tissue)
- 3- *Pyrus* macerated Fruit (Sclerenchyma tissue -Stone cells or brachysclereids)
- 4- *Vitis* macerated stem (Sclerenchyma tissue -Xylem fibers)

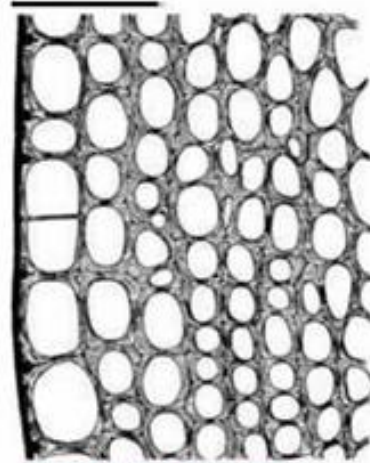
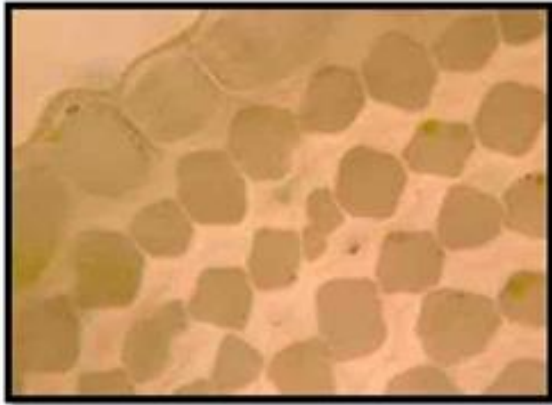
Characteristic of Parenchyma tissue

1. Living cell with intercellular spaces .
2. Thin cytoplasm.
3. Primary cell wall.
4. Found in aerial and subterranean parts of plants.



Characteristic of Collenchyma tissue:

1. Living cells with primary cell wall.
2. cell wall thickening un evenly with pectin.
3. Found in aerial parts only.



Lamellar collenchyma