



جَامِعَةُ الْمُسْتَقْبَلِ

AL-MUSTAQBAL
UNIVERSITY



**College of Engineering and Engineering Technologies -
Medical Device Technology Engineering**

M.A.

AHMED HELMI KADHIM

The third stage

First semester experiences

ECG, EMG, EEG & ERG

Electroencephalography

EEG



What is the abbreviation for EEG :

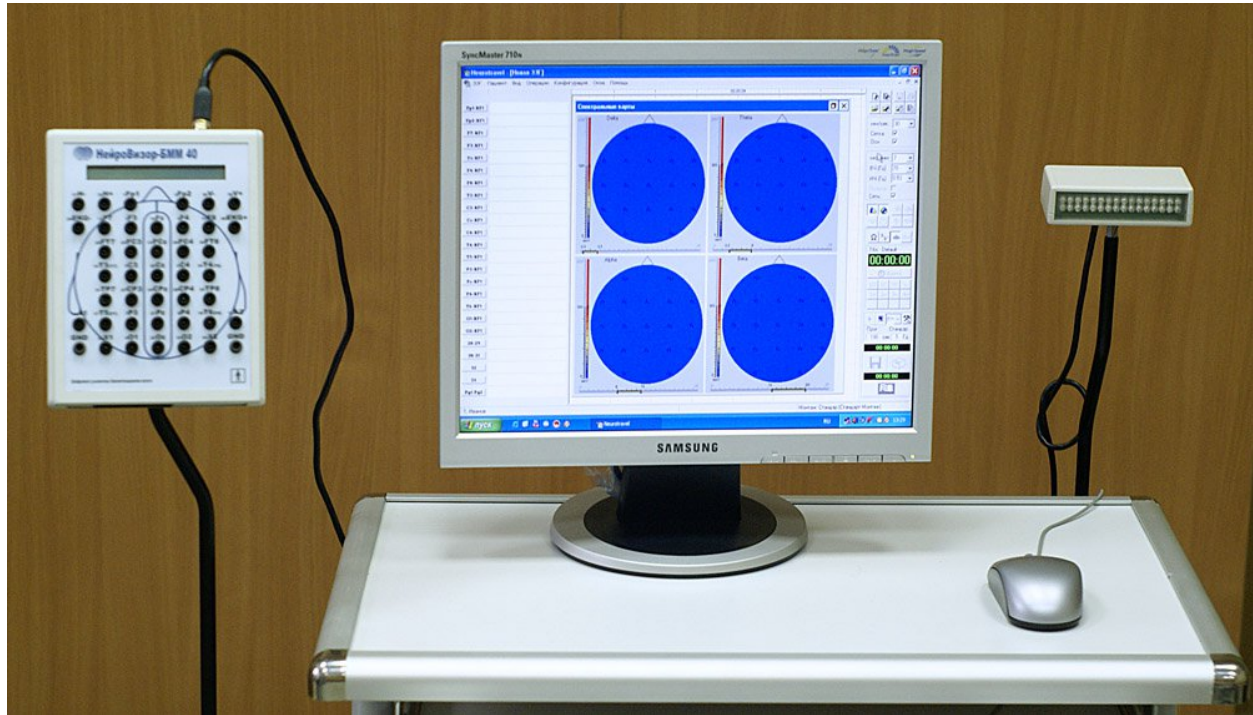
ANS: electroencephalography

• What are the cases that can be examined by the device? :

Epilepsy, Alzheimer's disease, excess brain charges, and other cases

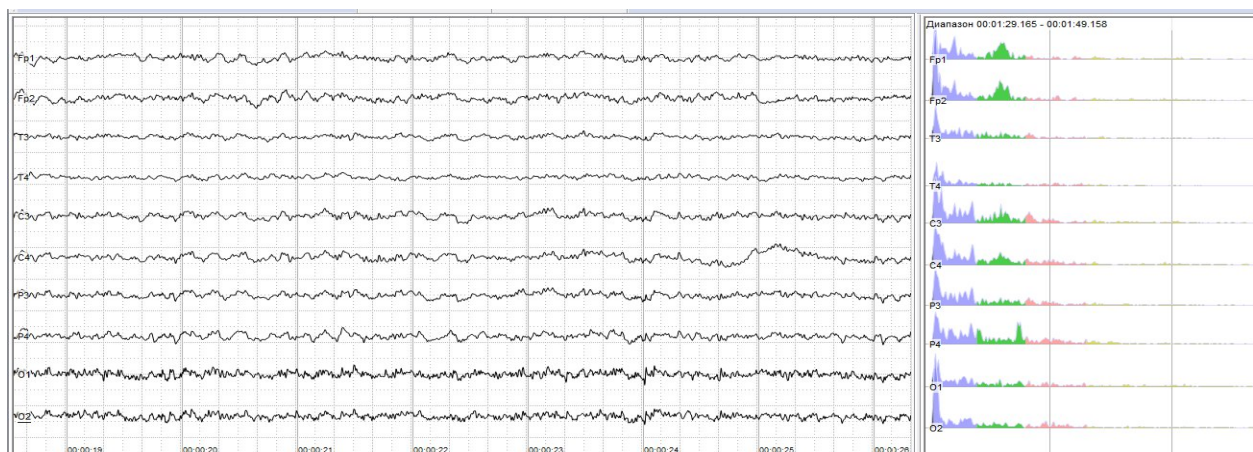
What are the main parts of the device? :

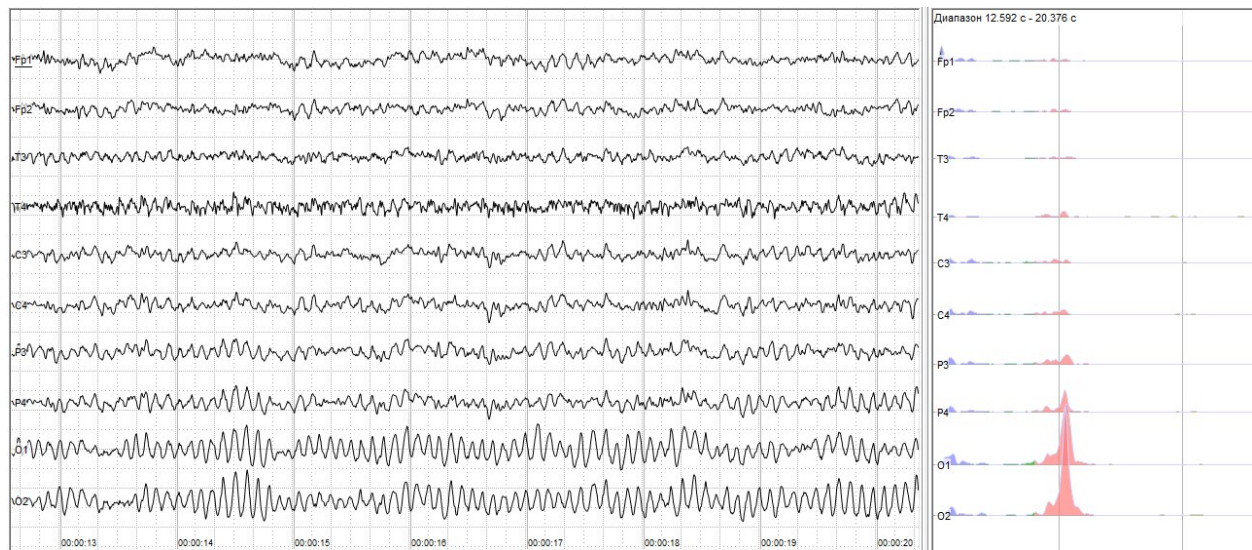
Display screen, electrical control panel, central control unit and medical examination electrodes .



What is the principle of operation of the device? :

The device works to detect electrical waves emitted by the brain and convert them into graphs displayed on the device's display screen and can also be printed on paper .





What are the types of electrodes in general? :

Needle & Disposable electrodes -

NEEDLE ELECTRODES



DISPOSABLE ELECTRODES



Wat is the correct number of hours for an electroencephalography examination? :

In general, the patient needs to be examined correctly for a period of approximately 7 to 20 hours, and it is preferable for the patient to come to the examination while he is not asleep for a long period in order to take a period of sleep during the examination procedures .

What are the common and recurring problems or faults?

Answer:

We have many faults, including: - pole faults, electrical faults, and software faults.



END OF THE THIRD LECTURE

I WISH YOU GOOD LUCK AND SUCCESS