



# **Blood Smear**

## **3<sup>rd</sup> Practical**

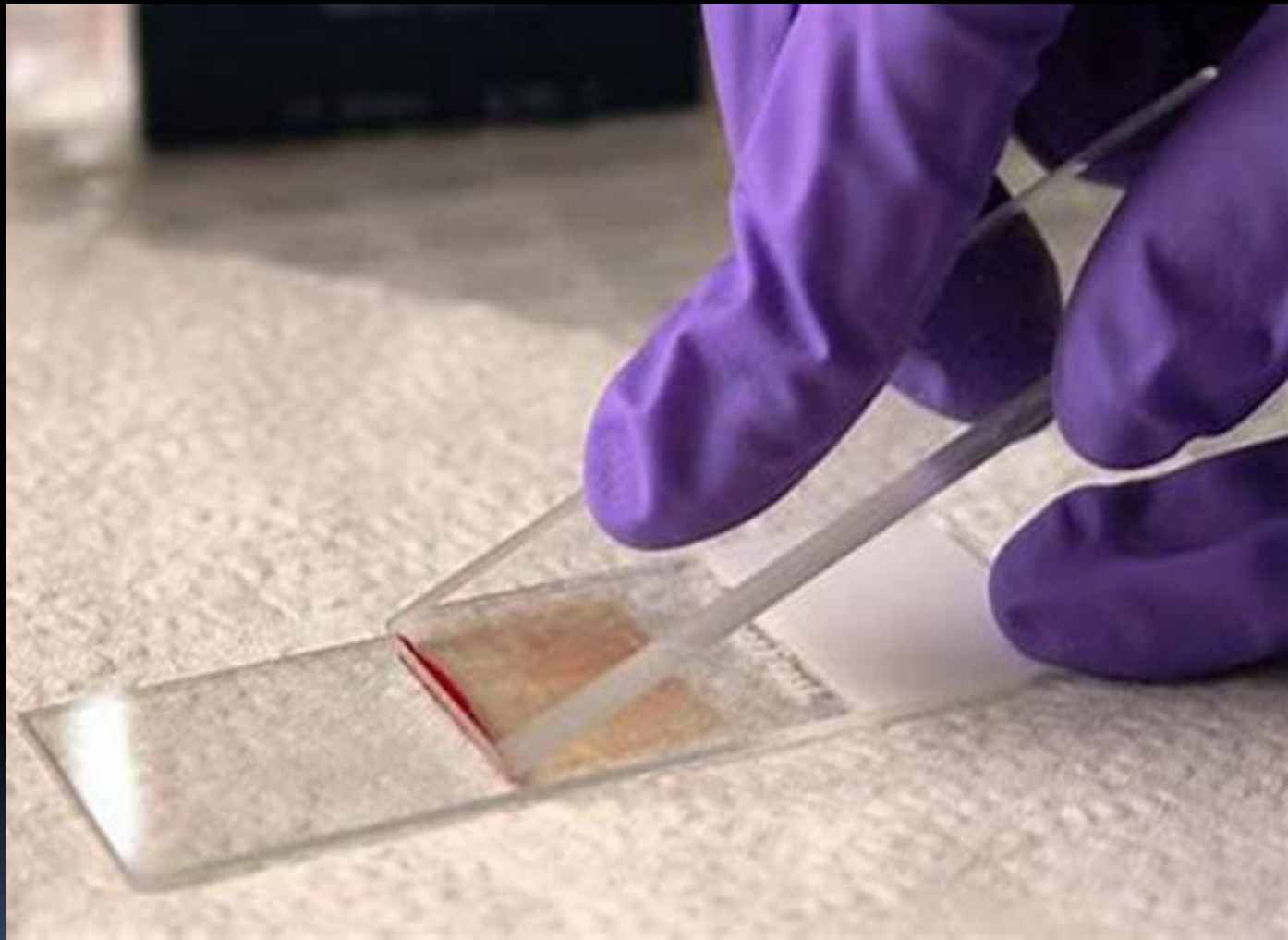
### **1<sup>st</sup> Term**



**Prepared and Presented by:**

**Lecturer Dr/ Ayad AbdelSalam**  
**Assist. Lecturer Dr/ Ghadeer Talib**

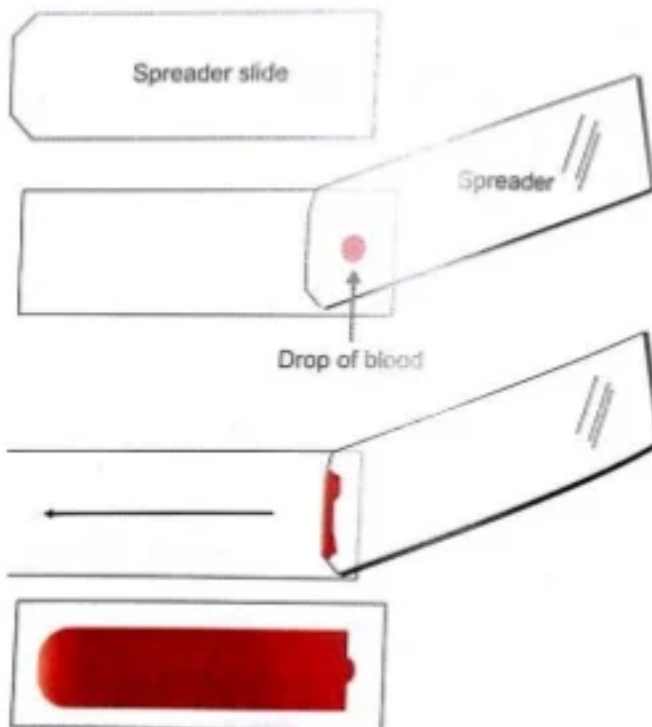
**Teaching of Physiology**  
**College of Technology & Health Sciences**  
**Radiology Techniques Department**



## Blood Smear Test



# SMEAR PREPARATION



1. Place a drop of blood, about 2-3 mm in diameter approximately 1 cm from one end of slide.
2. Place the slide on a flat surface, and hold the other end between your left thumb and forefinger.
3. With your right hand, place the smooth clean edge of a second (spreader) slide on the specimen slide, just in front of the blood drop.
4. Hold the spreader slide at a 30°- 45 angle, and draw it back against the drop of blood
6. Allow the blood to spread almost to the edges of the slide.
7. Push the spread forward with one light, smooth moderate speed. A thin film of blood in the shape of tongue.
8. Label one edge with patient name, lab id and date.
9. The slides should be rapidly air dried by waving the slides or using an electrical fan.