



# Anatomy II

(UOMU013044)

## LEC. 9



## respiratory system & Alimentary System

**Al-Mustaqbal University College of Engineering & Technology**  
**Department of prosthetics and orthotics engineering**

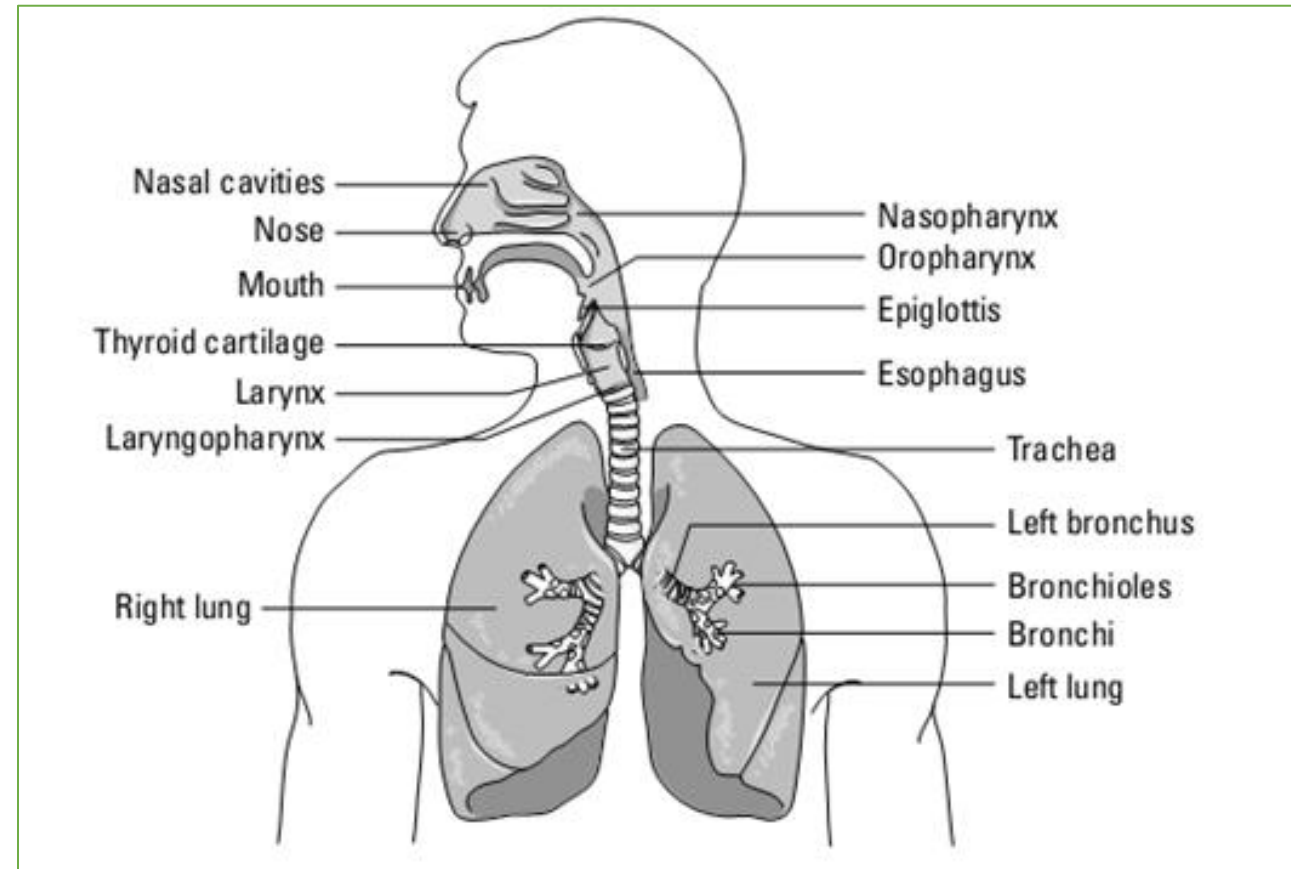
**Dr. sally Alwash**

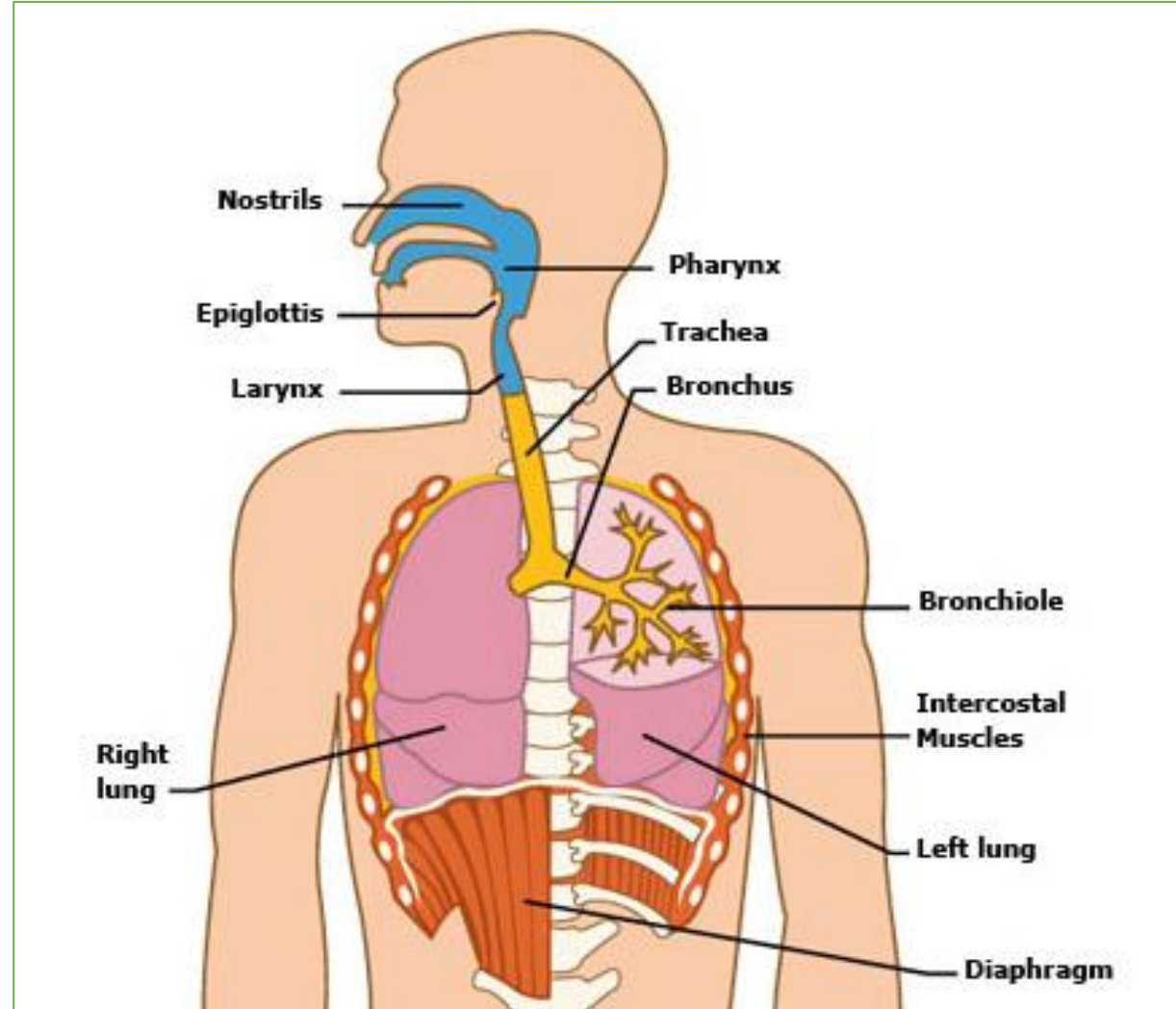
**Eng. Aya Talib**

# respiratory system

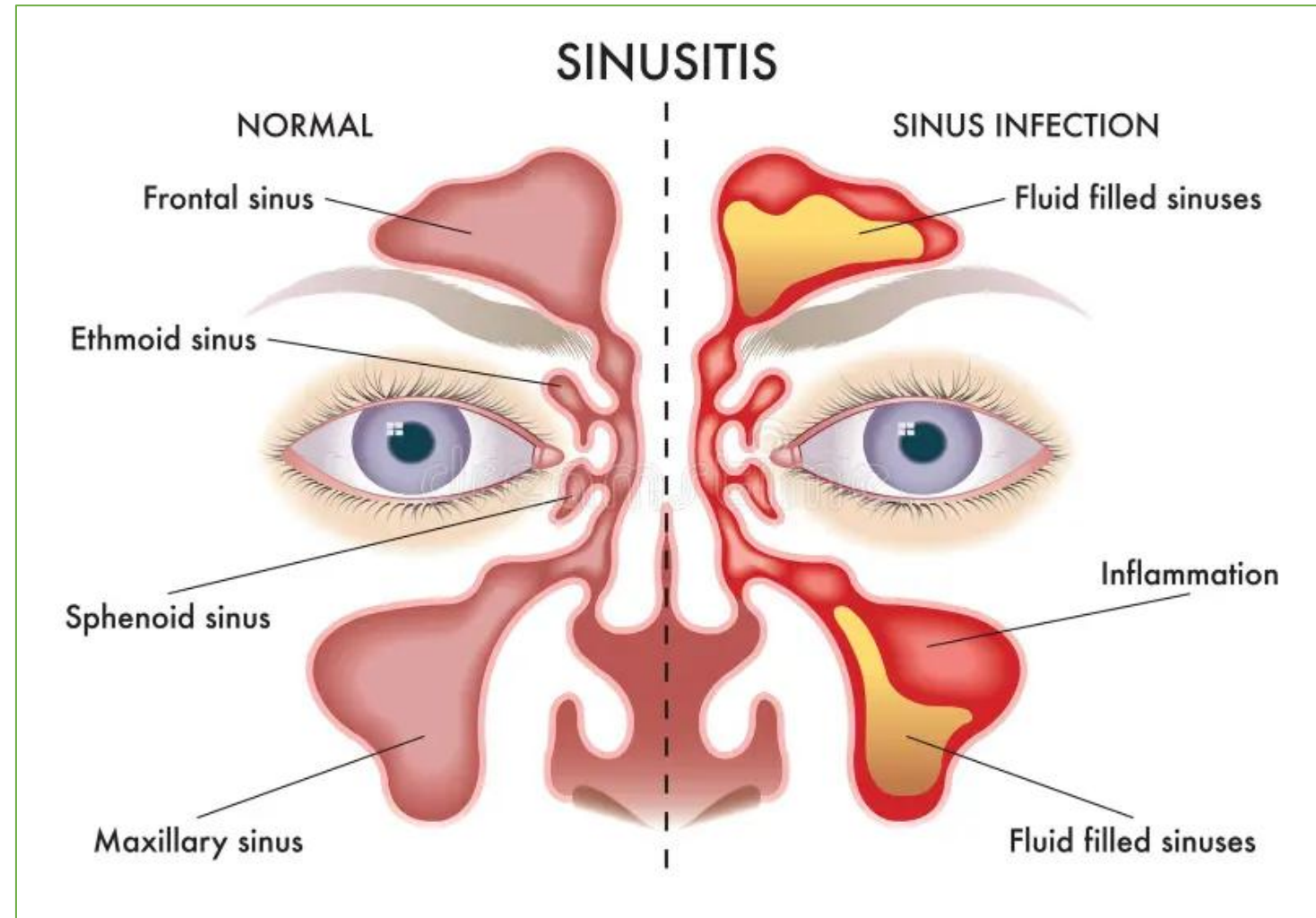
Structural Divisions:

- **Upper respiratory tract:** Nose, nasal cavity, pharynx
- **Lower respiratory tract:** Larynx, trachea, bronchi, lungs





Air-filled cavities in front of the maxillary, ethmoid, and sphenoid bones



# Alimentary System

The parts of the alimentary system: is a continuous tube that extends from the **mouth** to **the anus**

1. Oral Cavity
  2. Pharynx
  3. Esophagus
  4. Stomach
  5. Small Intestine
    - Duodenum
    - Jejunum
    - Ileum
  6. Large Intestine
    - Cecum
    - appendix
    - Colon: ascending, transverse, descending, sigmoid Rectum and canal
- ❖ Salivary Glands
  - ❖ Liver
  - ❖ Gallbladder
  - ❖ Pancreas

