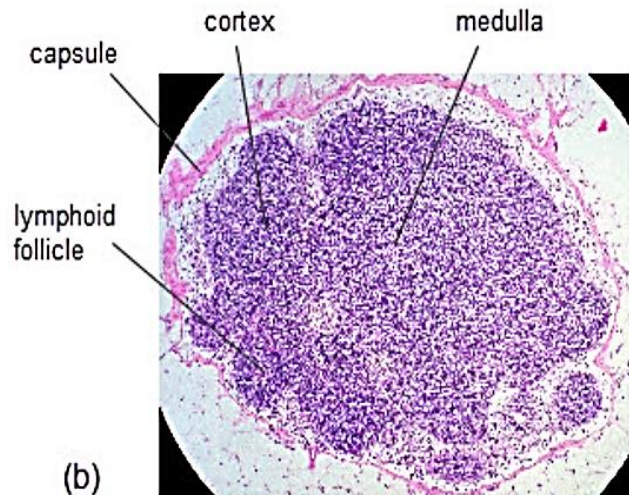
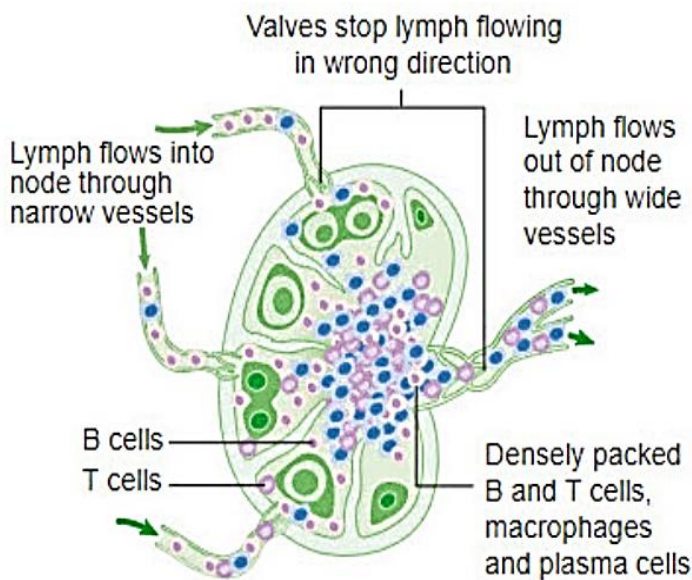


## (lymphoid tissues, phagocytosis)

**Lymphoid tissue** :- A lymphoid tissue is simply a tissue in which lymphocytes are found. **Lymphoid tissues** range in organization from diffuse arrangements of individual cells to encapsulated organs .

**Lymphoid follicles** are organized cylindrical clusters of lymphocytes that, when gathered into groups, are called **lymphoid patches**.

Lymphoid organs are usually groups of follicles that are surrounded, or encapsulated, by specialized supporting tissues and membranes.



### Lymphocyte

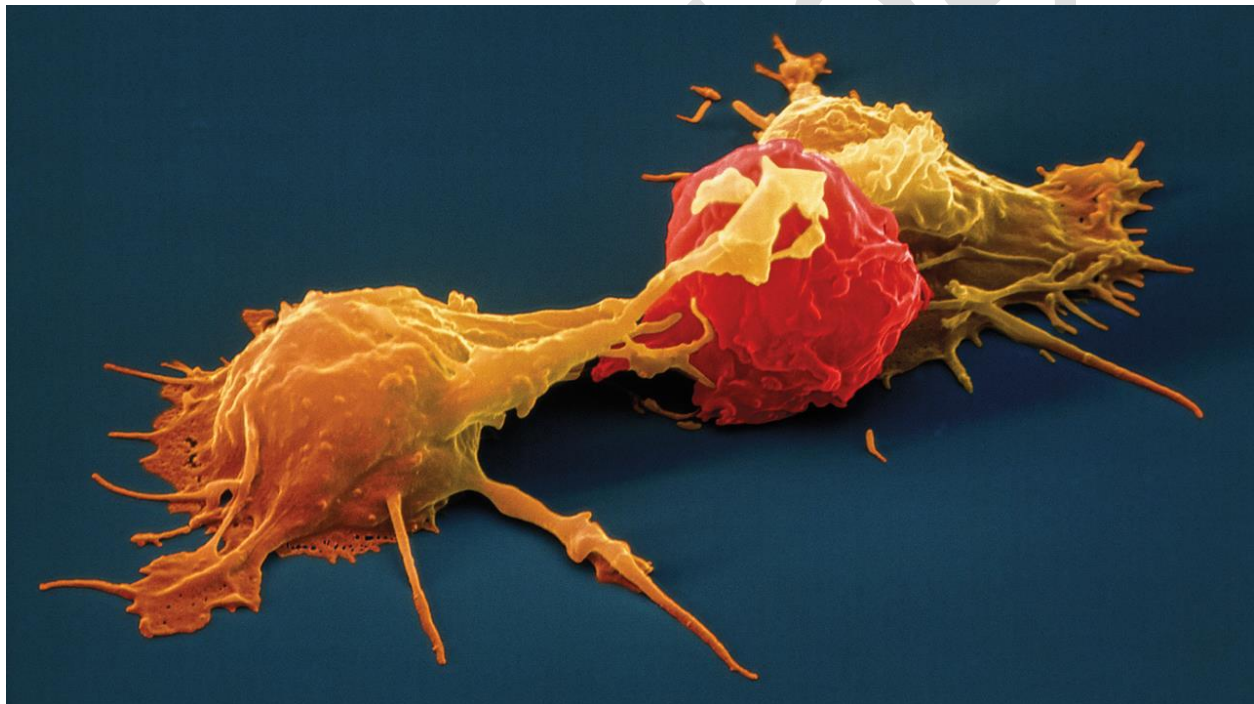
Lymphocyte are the central cells of the immune system, responsible for adaptive immunity and the immunologic attributes of diversity, specificity, memory, and self/nonself recognition. The other types of white blood cells play important roles, **engulfing and destroying microorganisms, presenting antigens, and secreting cytokines.**

**Lymphoid Cells:**

Lymphocytes constitute 20%–40% of the body's white blood cells and 99% of the cells in the lymph. These lymphocytes continually circulate in the blood and lymph and are capable of migrating into the tissue spaces and lymphoid organs, thereby integrating the immune system to a high degree.

**The lymphocytes can be broadly subdivided into three populations:**

- 1- **Natural killer cells (NK cells)** are large, granular lymphocytes that do not express the set of surface markers typical of B or T cells.



- 2- **B cells** :- Derived its letter designation from its site of maturation, in the bursa of fabricius in bird; and in bone marrow where is its major site of maturation in a number of mammalian species including humans and mice. Mature B cells display of membrane-bound immunoglobulin (antibody) molecules, which serve as receptor for Ag (BCR) .

**Types of B cells**

- 1- **Effector cells** called Plasma cells , which produce the Ab in a form that can be secreted and have little or no membrane-bound Ab. They are end-stage cells and do not divide.
- 2- **Memory B cells**, which have a longer life span than naïve cells, and they express the same membrane-bound Ab as their parent B cell.

**3- T-Cells**

It derives its designation from their site of maturation in the thymus. During its maturation within the thymus, the T cell comes to express on its membrane a unique Ag- binding molecule called the T-cell receptor. TCR recognize Ag that is bound to cell membrane proteins called major histocompatibility complex (MHC).

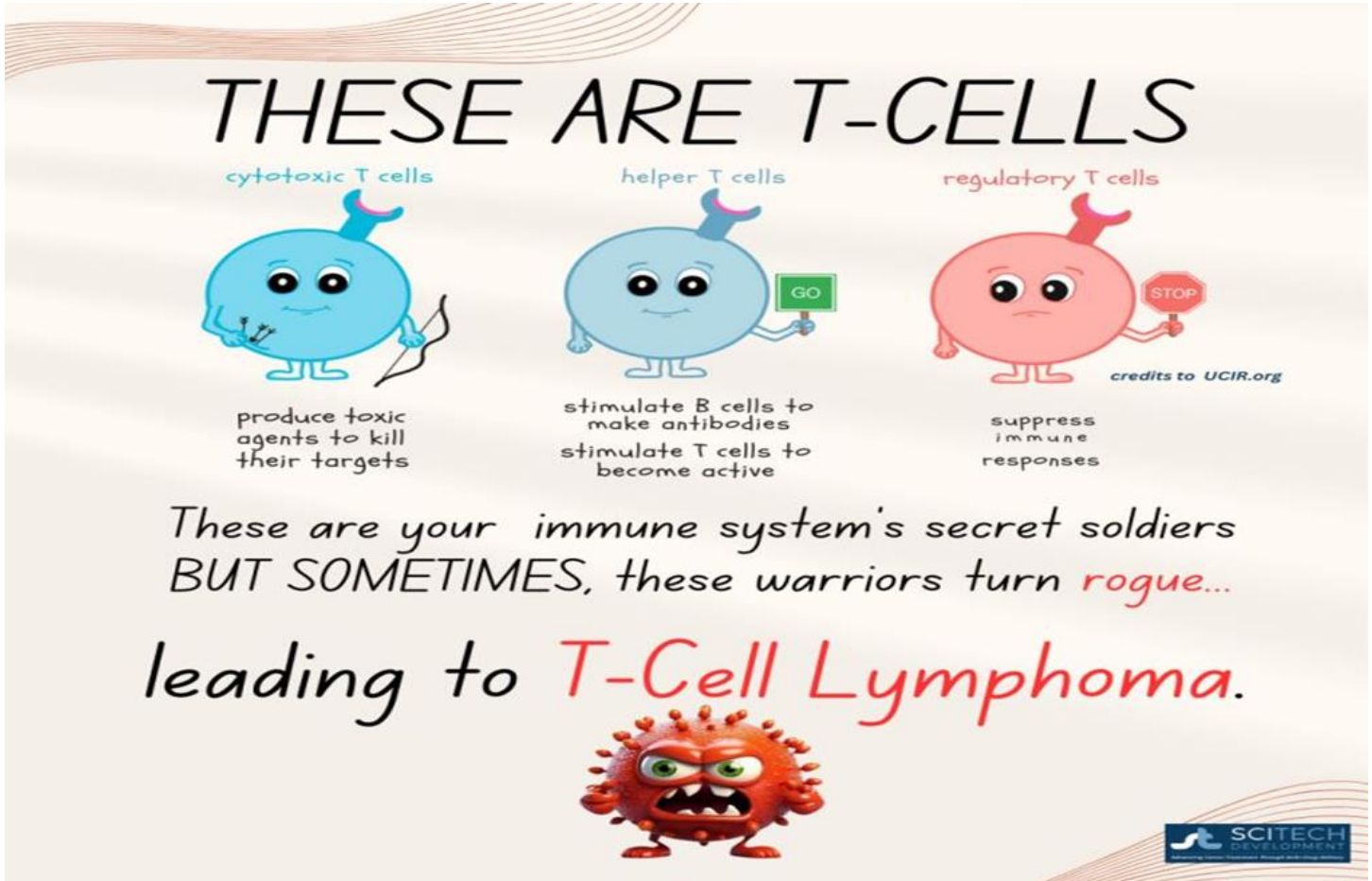
**There are Three well-defined subpopulations of T cells:****1. T-helper (TH) cells.**

T helper cells characterize by the presence of **CD4** membrane glycoproteins on their surfaces.

**2. T-cytotoxic (TC ) cells.**

T cytotoxic cells express **CD8** membrane glycoproteins on their surfaces.

3. **T-regulatory ( T-reg )cells** .known as (suppressor T cells), are a subpopulation of T cells that modulate the immune system, maintain tolerance to self-antigens, and prevent autoimmune disease.



### NATURAL KILLER CELLS

It is lymphocytes that display cytotoxic activity against a wide range of tumor cells in the absence of any previous immunization with the tumor. NK cells were subsequently shown to play an important role in host defense both against tumor cells and against cells infected with some, though not all, viruses.

phagocytosis,



**phagocytosis** :- process by which cell known as phagocytes ingest or engulf other cells or particles.

