

Department of Radiology Techniques

Radiological Position

The Second Stage

Semester 2



ilium Position

*Lecture 4*

*Assist. Lecturer*

*Tariq Nadhim Jassim*

# *Positions of ilium*

*1- Posterior oblique – basic projection*

*2- Posterior oblique (alternate)*

*Cassette In – Bucky (10x12 Inch)*

## ***Posterior oblique – basic projection***

### ***Position of patient and cassette***

- The patient lies supine on the X-ray table and is positioned for a basic anterior-posterior pelvic projection.*
- From this position, the patient is rotated approximately 40 degrees on to the affected side; the unaffected side is raised and supported.*
- Both hips and knees are flexed and the raised limb is supported on a pad.*
- The iliac fossa is now parallel to the cassette.*
- Cassette 10x12 Inch is placed crossways in the Bucky tray, with the top margin 5 cm above the iliac crest.*

### ***Direction and centering of the X-ray beam***

- Centre midway between the anterior superior iliac spine of the affected side and the midline of the pelvis, with the vertical central ray perpendicular to the film.*



Normal posterior oblique projection of ilium

## ***2- Posterior oblique (alternate)***

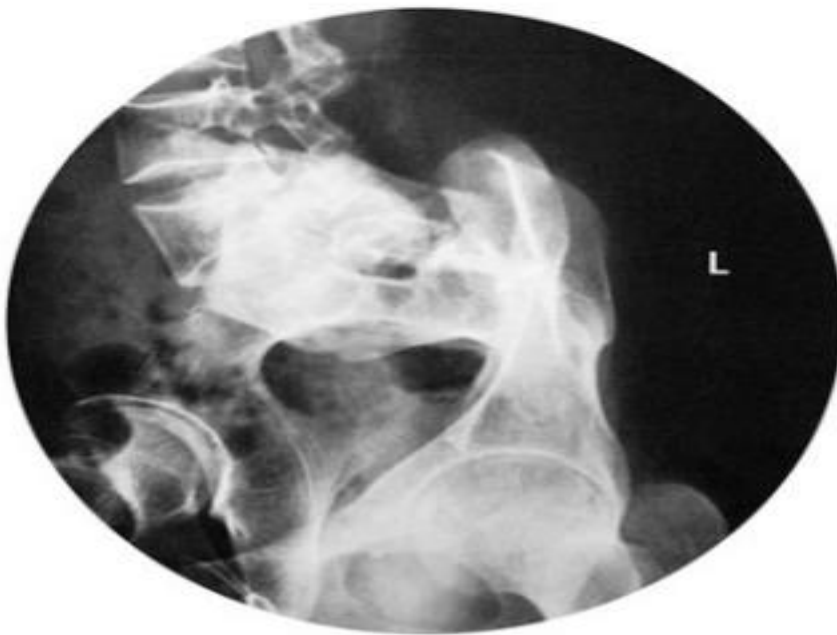
*This is an uncommon projection that can be used when additional information is required regarding the posterior aspect of iliac bone.*

### ***Position of patient and cassette***

- The patient lies supine on the X-ray table.*
- From this position, the patient is rotated approximately 45 degrees on to the unaffected side, with the affected side raised and supported.*
- Cassette 10x12 Inch is placed longitudinally in the Bucky tray, 5 cm above the iliac crest.*

### ***Direction and centering of the X-ray beam***

- The vertical central ray is directed to the anterior superior iliac spine on the side being examined.*



Normal posterior oblique (alternate) projection of ilium

Thanks

The word "Thanks" is written in a large, pink, cursive-style font with a textured, glittery appearance. It is decorated with three pink roses and green leaves. One rose is positioned above the 'h', another to the left of the 'T', and a third to the right of the 's'. The roses have multiple layers of petals and are attached to thin brown stems with small green leaves.