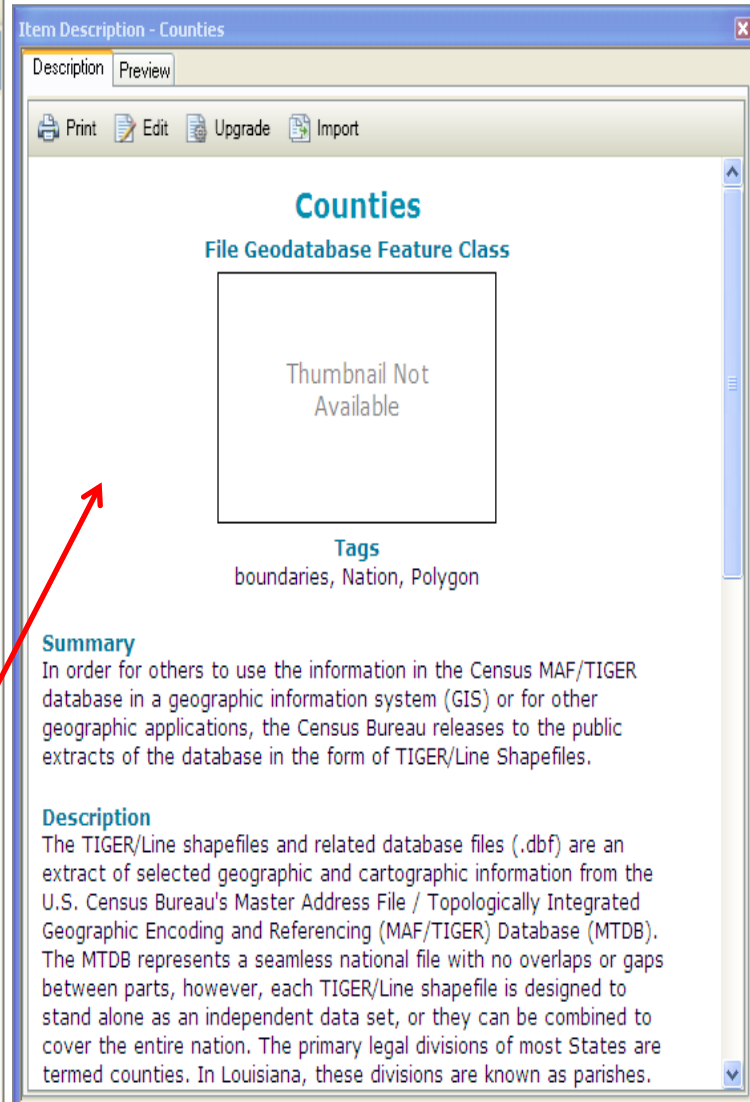
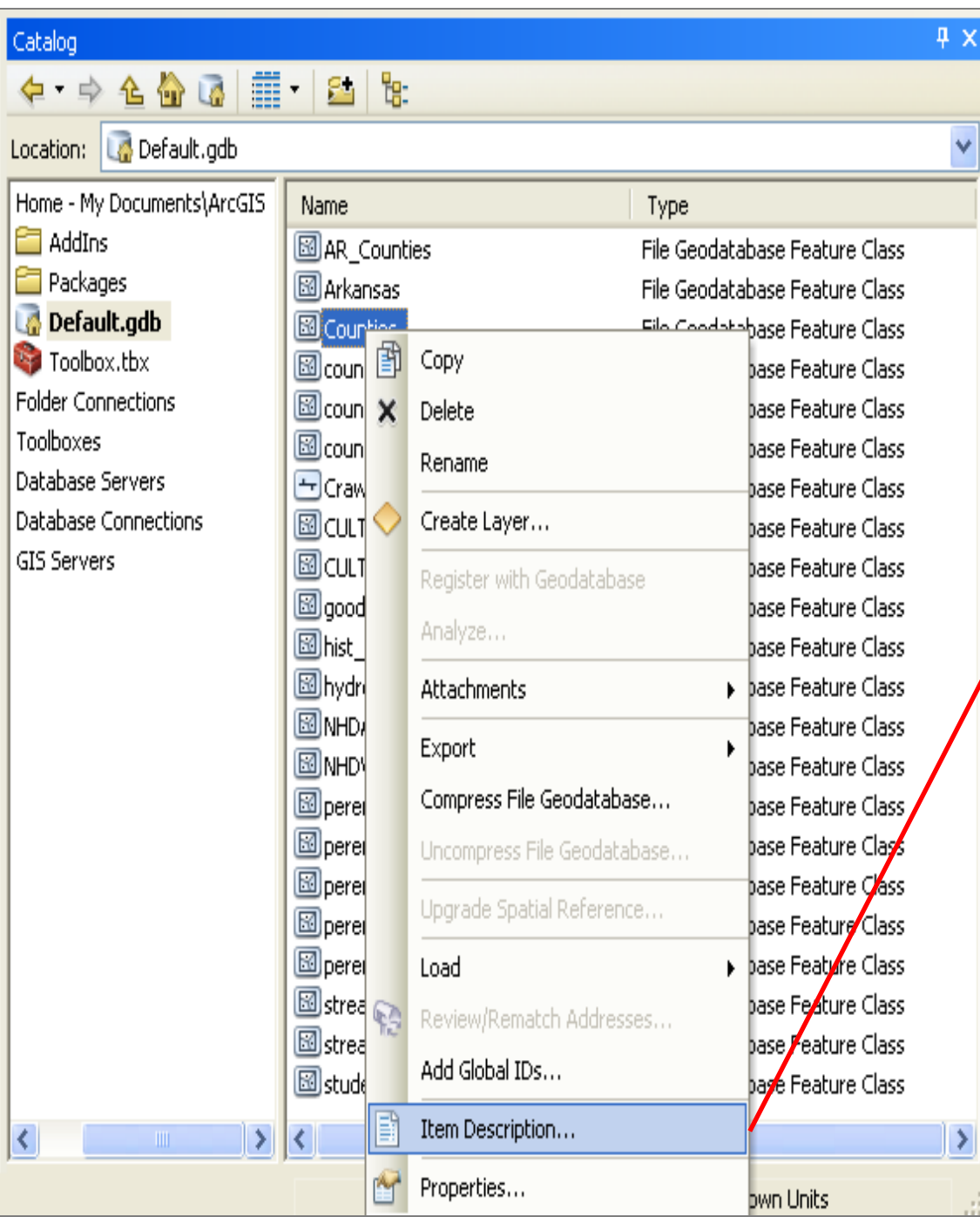




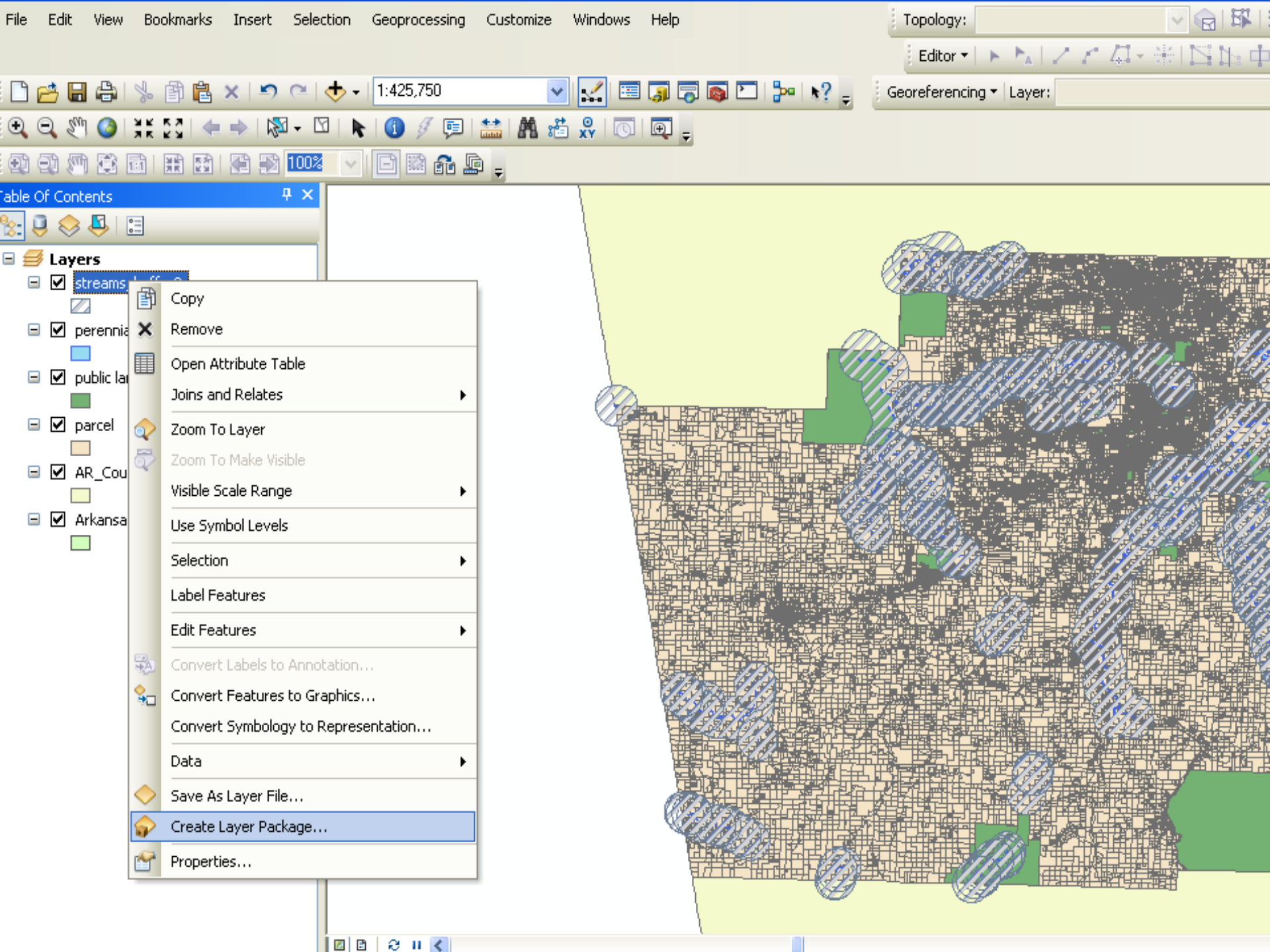
Use ArcCatalog to View Metadata

جامعة المستقبل / كلية العلوم
قسم الانظمة الطبية الذكية
المرحلة الثالثة



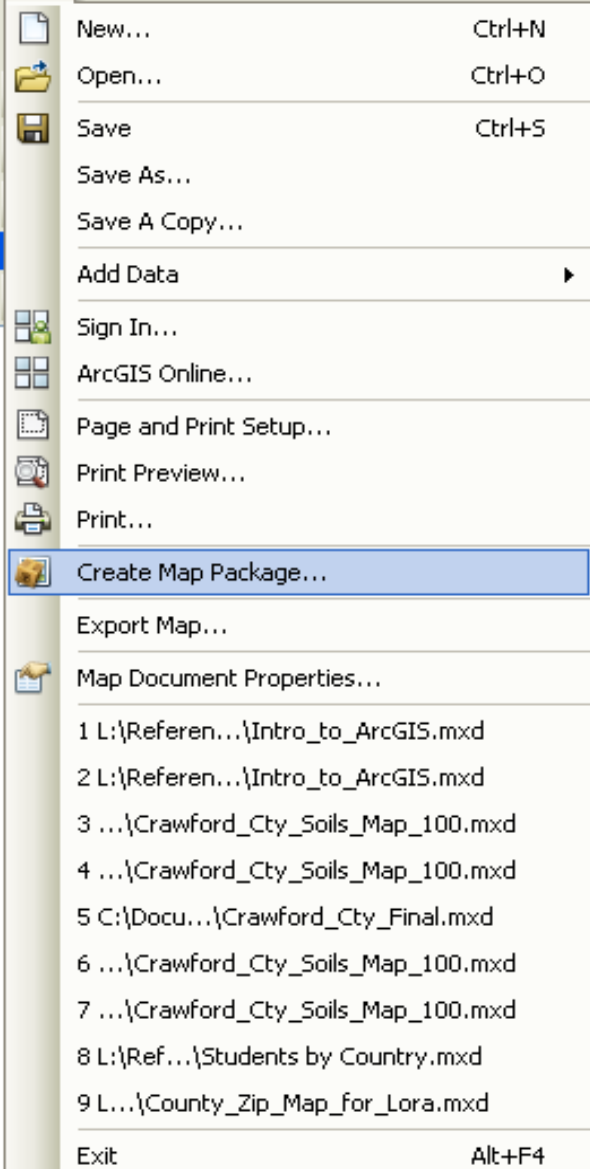
Share Maps and Layers with Packages

- Package up all the information used to create a layer or map document for easy sharing by email, a shared drive on the LAN, etc.
- Right-click a layer in the TOC and select “Create Layer Package”

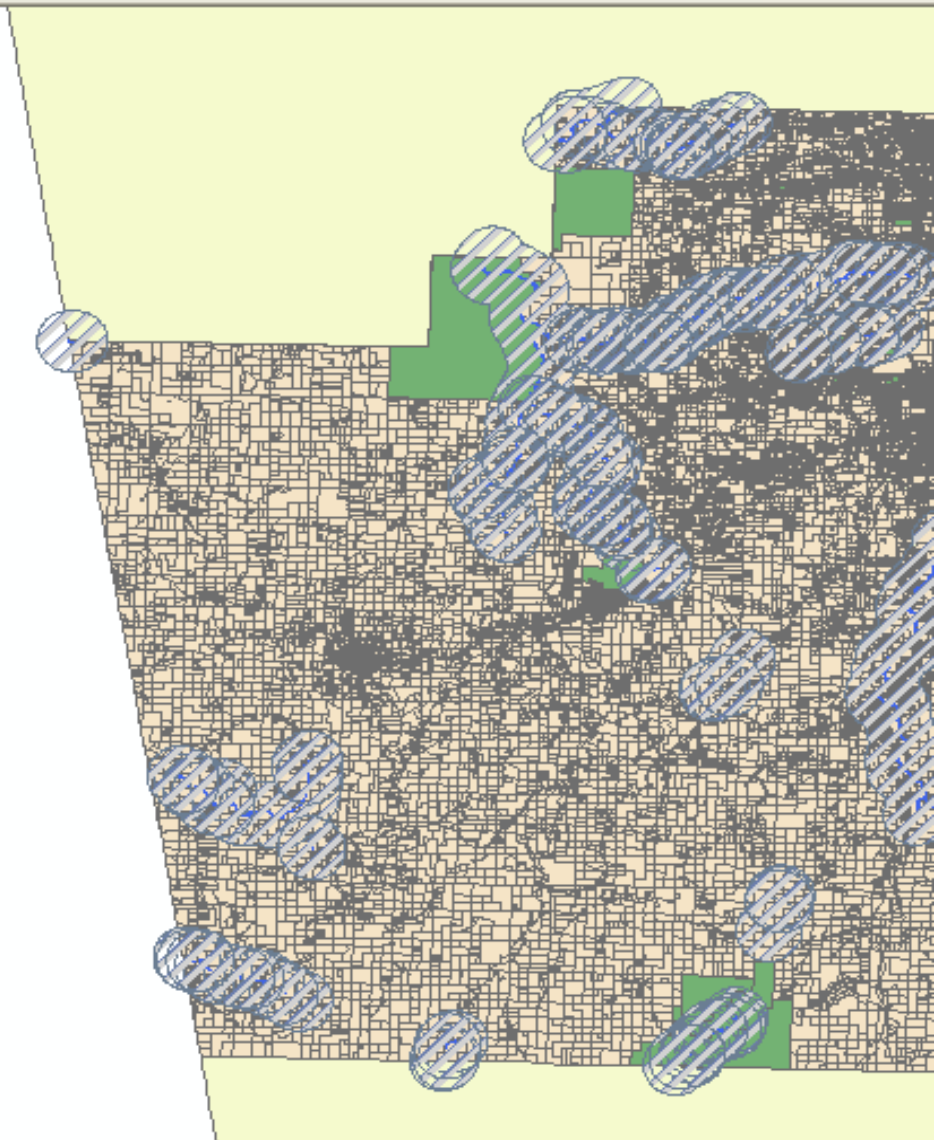


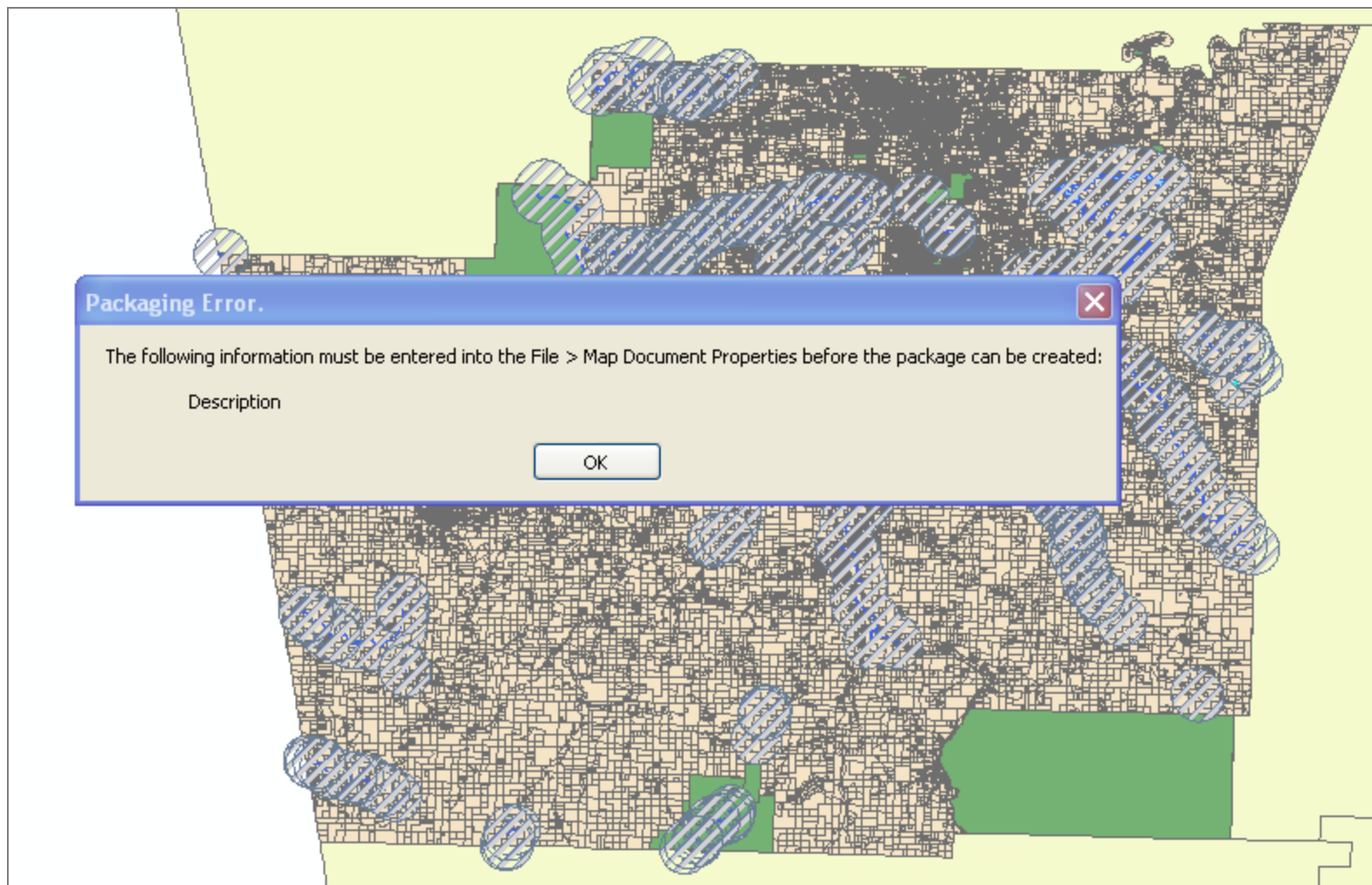
Share a Map Package

- To package up an entire map document for sharing, use File | Create Map Package



1:425,750





ArcMap will force you to create some limited metadata before creating a sharable package. Click OK.

Map Document Properties

General

File: tions\Dougherty_Intro to ArcGIS\Intro_to_ArcGIS.mxd

Title: Washington County Parcels in Flood Zone

Summary: This map shows Washington County, Missouri parcels within one mile of perennial streams.

Description: This map shows Washington County, Missouri parcels within one mile of perennial streams.

Author: University of Arkansas Libraries

Credits: Washington County, MO GIS Department

Tags: floods, parcels

Hyperlink base:

Last Saved: 11/15/2012 11:12:57 AM

Last Printed:

Last Exported:

Default Geodatabase: C:\Documents and Settings\kmdoughe\My Docum

Pathnames: ☐ Store relative pathnames to data sources

Thumbnail:

Make Thumbnail

Delete Thumbnail

OK

Cancel

Apply

Creating Packages

- Save the package as a file and share as you usually would
- You must “validate” your package before saving
 - Detects any errors that would impede sharing



Create Map Package



- ☐ Upload package to my ArcGIS Online account

Intro_to_ArcGIS

- ☒ Save package to file

C:\Documents and Settings\kmdoughe\My Documents\Dropbo



- ☐ Include ArcSDE geodatabase data

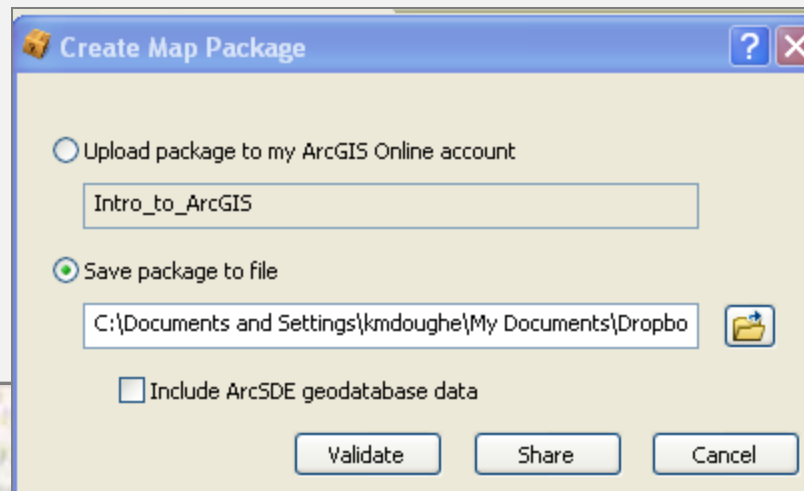
Validate

Share

Cancel

Validation

- Any errors need to be corrected. Click on any error messages to see a help document.
- Warnings are warnings only – can go ahead and publish.
- If no problems, the share button will become active.



What Else Can You Do with GIS?

- Join stats based on geography (i.e., states) to a states GIS layer and view the data spatially
 - Excel, CSV, text formats
- Create/digitize your own data
- import GPS data
- Analyze viewsheds and shadows
- Use web map services for mashups in your own applications
- Much more!

GIS Software at University of Arkansas

- Reference desk machine (version 10.1)
- Campus-wide license – administered by the Center for Advanced Spatial Technologies (CAST)
- Free software

Sources of GIS Data

- Search for selected base layers (reference maps) from right within the application
- [GeoStor](#) (Arkansas state portal)
- [geo.data.gov](#) (federal portal)
- [National Map \(USGS\)](#)
- [TIGER/Census Shapefiles](#) (reference layers – boundaries, roads)

LibGuide

- The [Maps, GIS and Remote Sensing LibGuide](#) can point you to:
 - Information on how to get Esri software through the campus license
 - Resources for learning GIS
 - Sources of GIS data (spatial and attribute)

Maps, GIS and Remote Sensing

Tags: [geography](#), [geology](#), [geosciences](#), [maps](#)

A guide to map, geographic information systems (GIS), and remote sensing resources in Mullins Library or on the Web.

Last Updated: Oct 1, 2012

URL: <http://uark.libguides.com/content.php?pid=334373>

 [Print Guide](#)

 [RSS Updates](#)

 [SHARE](#)    ...

- [Getting Started](#)
- [Arkansas Maps](#)
- [U.S. Topographic Maps](#)
- [Geologic Maps](#)
- [Historical Maps](#)
- [Digging Deeper for Maps](#)
- [GIS](#)
- [Remote Sensing](#)
- [Spatial Data Sources](#)
- [Spatial Tools](#)
- [Citation Help](#)

Spatial Data Sources  [Comments\(0\)](#)  [Print Page](#)

Search: This Guide 

Arkansas Spatial and Attribute Data

- ◊ [GeoStor](#)  
- ◊ [pARcelmaps](#) 
- ◊ [Washington County, AR Parcels](#)
- ◊ [Arkansas Department of Environmental Quality](#) 
- ◊ [Landsat Data Archive](#) 
- ◊ [GAP Analysis Program - Arkansas](#) 
- ◊ [Arkansas Natural Resources Conservation Service](#) 
- ◊ [Washington County GIS Portal](#) 
- ◊ [Benton County GIS Home Page](#) 
- ◊ [Northwest Arkansas Imagery Viewer](#) 
- ◊ [Arkansas Watershed Data](#) 

[Comments \(0\)](#)

General

We've only listed some of the most commonly used GIS links here. The library links to [many, many more U.S. and international resources](#) based on former CAST staff member Stephan Pollard's "*Starting the Hunt*" web site.

GIS Day is November 14th!

Join the University Libraries and the Center for Advanced Spatial Technologies (CAST) in celebrating GIS Day on November 14! Presentations, posters & classes demonstrating applications of GIS technology will be held. Stay tuned for more information.



[Comments \(0\)](#)

University of Arkansas GIS Initiatives

- ◊ [Center for Advanced Spatial Technologies \(CAST\)](#) 
- ◊ [Environmental and Spatial Technology Initiative \(EAST\)](#) 
- ◊ [Archaeological Geomatics](#) 
- ◊ [National Archeological Database \(NADB\)](#) 
- ◊ [Geomatics Methods for Environmental Analysis and Management](#) 



Arkansas' Official GIS Platform

[Home](#)[Viewer](#)[Services](#)[FTP](#)[Help](#)[Feedback](#)[Developers](#)[Blog](#)

This site provides access to geographic information system (GIS) applications, data, and web services in the state of Arkansas. Users need a working knowledge of GIS.

[Advanced Search](#)

Latest GeoStor Blog Posts

- [Nevada and Woodruff County's Centerlines Updated](#)
- [City Boundaries Updated on GeoStor](#)
- [Logan and Monroe County Road Centerlines Updated](#)
- [Road Centerlines for Carroll and Greene Counties Updated](#)

Share



Stay Informed



Latest GeoStor Tweets

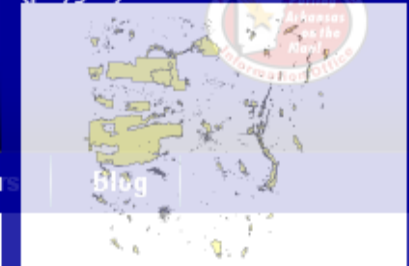
- Road centerlines updated for Nevada & Woodruff County. <http://t.co/WdpIX2Bd> 21 days ago
- Major update to city boundaries! Details here <http://t.co/Lrd5QqPT> 42 days ago

Release 6.0SM

Arkansas' Official GIS Platform

[Home](#)[Viewer](#)[Services](#)[FTP](#)[Help](#)[Feedback](#)[Developer](#)Informational Message: ×

Thumbnail for Public Land Boundary (polygon)

[Blog](#)

This site provides access to geographic information system (GIS) applications, data, and web services in the state of Arkansas. Users need a working knowledge of GIS.

[Advanced Search](#)[Bookmark these results](#) | [Direct link to these results](#)

Link	Type	Metadata	Thumbnail
All Cultural Feature (point)	DL	View	View
Cultural Web Feature Service	WFS	View	View
Public Land Boundary (polygon)	DL	View	View
USACOE Inland Electronic Navigation Charts	OFF	View	View
Administrative Features (point)	DL	View	View
GeoStor All Layers Feature Service	WFS	View	View
National Register of Historic Places	OFF	View	View
National Transportation Atlas Database	OFF	View	View
Trailer Park (point)	DL	View	View



Arkansas' Official GIS Platform



Home

Blog

Public Land Boundary (polygon)



County

City

Watershed

Statewide

More Options

Select a County: Washington

Format:

ESRI Shape

Coordinate System:

NAD83 UTM - Zone 15

Email Notification Address

kmdoughe@uark.edu

Save download preferences? ☒

Close

Request Data

[USACOE Inland Electronic Navigation Charts](#) OFF [View](#) [View](#)[Administrative Features \(point\)](#) DL [View](#) [View](#)[GeoStor All Layers Feature Service](#) WFS [View](#) [View](#)[National Register of Historic Places](#) OFF [View](#) [View](#)[National Transportation Atlas Database](#) OFF [View](#) [View](#)[Trailer Park \(point\)](#) DL [View](#) [View](#)

Release 6.0SM

Arkansas' Official GIS Platform

[Home](#)[Viewer](#)[Services](#)[FTP](#)[Help](#)[Feedback](#)[Developers](#)[Blog](#)

This site provides access to geographic information system (GIS) applications, data, and web services in the state of Arkansas. Users need a working knowledge of GIS.

[Advanced Search](#)[Bookmark these results](#) | [Direct link to these results](#)

Link	Type	Metadata	Thumbnail
All Cultural Feature (point)	DL	View	View
Cultural Web Feature Service	WFS	View	View
Public Land Boundary (polygon)	DL	View	View
USACOE Inland Electronic Navigation Charts	OFF	View	View
Administrative Features (point)	DL	View	View
GeoStor All Layers Feature Service	WFS	View	View
National Register of Historic Places	OFF	View	View
National Transportation Atlas Database	OFF	View	View
Trailer Park (point)	DL	View	View

Informational Message:

Your download has been submitted, you will be notified upon its completion.

Warning Message:

Your preferences have been saved.

Informational Message:

Your download was successfully submitted.

[\[close all \]](#)

geostor@arkansas.gov

GeoStor Result Notification

FME Transformation with job ID
the link below to download resul



Good luck!



Thank you!