



## Word Elements/medical term parts:

A medical word consists of some or all of the following elements:

- 1-Word root
- 2-Combining form
- 3-Suffix
- 4- Prefix

These word components can be joined in many ways to form thousands of medical terms. Learning these basic parts is the first step to understanding full medical vocabulary. The meaning of any medical term depends on how these elements are combined and whether all or only some of them are included.

### 1. Word Roots

Word roots usually refer to a body part or a basic concept. The root is the core of the word, and every medical term contains at least one root.

#### Examples:

word	Root
Writing	Write
Builder, Builds, Building	Build
Helpful مفيد	Help
Driving	Drive
Heater مسخن	Heat

**Note:** A word root can be used on its own or combined with other elements to create a new word with a different meaning.

**Example:** Look at the following examples to understand how roots are used either independently or together with other components to form new terms. The meaning of each term is also shown in the column on the right.

Root as a Complete Word	Root as a Part of a Word
Care	Careful
Lighten	Lighten
Movement	Move
Tonsil	Tonsillectomy

In medical terminology, a root usually refers to a body part or anatomical structure. For example, the root in **hepato/logy**, **hepatic**, and **hepato/megaly** is **hepato**, which means “liver.” Most roots in medical words come from Greek or Latin. Other examples include **oste** in **oste/o/arthritis**, **neur** in **neur/o/logist**, and **gastr** in **gastr/itis**. Here, **oste** means “bone,” **neur** means “nerve,” and **gastr** means “stomach.”

Root as a Complete Word	Root as a Part of a Word
Care	Careful
Lighten	Light
Movement	Move
Tonsil	Tonsillectomy
Appendix	Appendectomy

## Common Roots in Medical Terminology

Root	Meaning	Example	Meaning of Example
Cardi	Heart	Cardiology	Study of the heart
Hepat	Liver	Hepatitis	Inflammation of the liver
Dermat / Derm	Skin	Dermatology	Study of the skin
Gastr	Stomach	Gastritis	Inflammation of the stomach
Oste	Bone	Osteopathy	Study/treatment of bones
Neur	Nerve	Neurology	Study of nerves
Pancreat	Pancreas	Pancreatitis	Inflammation of the pancreas
Ren / Neph	Kidney	Nephrology	Study of the kidneys
Pulmon / Pulmo	Lung	Pulmonology	Study of the lungs
Arthr	Joint	Arthritis	Inflammation of the joints

### *Combining Forms*

A **combining form (CF)** is created when a word root is combined with a vowel. This vowel is usually an ***o***. The vowel has no meaning of its own but enables two-word elements to be linked. Usually indicates a body part.

Like the word root, the *Combining Form* is the basic part on which other elements are added to build a complete word. In this text, a combining form will be listed as **word root/vowel**, such as ***dent/o*** and ***gastr/o***.

A word root + a vowel (usually an ***o***) form a new element known as a *combining form*. A combining vowel is attached to the word root in order to make a word easier to pronounce.

## Combining Forms Examples:

<i>Combining Form (CF)</i>	<i>Meaning</i>
<i>Cardi/ + o = cardi/o</i>	<i>Heart</i>
<i>Gastr/ + o = gastr/o</i>	<i>Stomach</i>
<i>Hepat/ + o = hepat/o</i>	<i>Liver</i>
<i>Nephr/ + o = nephr/o</i>	<i>Kidney</i>
<i>Oste/ + o = oste/o</i>	<i>Bone</i>

Activa

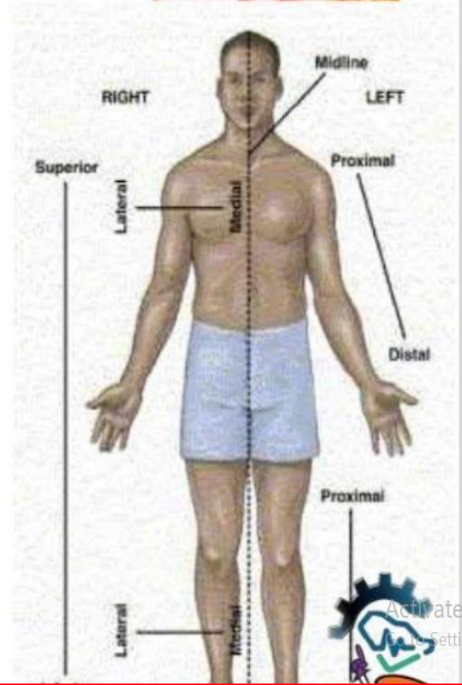
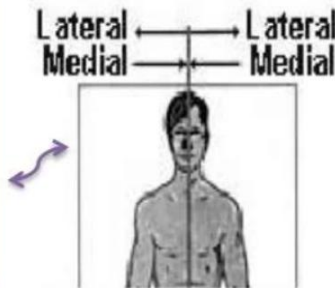
## Terminology Anatomical Direction and position:

Term (English)	المصطلح بالعربي	Definition (English)	الشرح بالعربي
Superior	علوي	Toward the head	باتجاه الرأس
Inferior	سفلي	Toward the feet	باتجاه القدمين
Anterior (Ventral)	أمامي	Toward the front of the body	باتجاه الامام
Posterior (Dorsal)	خلفي	Toward the back of the body	باتجاه الخلف
Medial	أنسي	Toward the midline	باتجاه خط منتصف الجسم
Lateral	وحشي	Away from the midline	بعيد عن خط المنتصف
Proximal	قريب	Closer to the point of origin	أقرب إلى منشأ الطرف
Distal	بعيد	Farther from the point of origin	أبعد عن منشأ الطرف
Superficial	سطحي	Near the surface	قريب من سطح الجسم
Deep	عميق	Away from the surface	بعيد عن سطح الجسم
Intermediate	متوسط	Between two structures	بين تركيبين
Ipsilateral	نفس الجهة	On the same side of the body	في نفس اتجاه الجسم
Contralateral	الجهة المقابلة	On opposite sides of the body	في الجهة المقابلة
Central	مركزي	Toward the center	باتجاه المركز
Peripheral	طرفي	Away from the center	بعيد عن المركز

# Anatomical Directions, Planes & Positions

Anatomical Position **is** The position with the body erect with the arms at the sides and the palms forward.

- Medial= **nearer** to the **midline** of the body or structure
- Lateral= **farther** from the **midline** of the body or structure

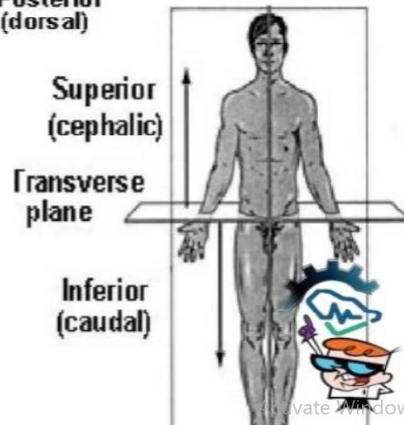


- Proximal= **nearer** to the **origin** of the part
- Distal= **farther** from the **origin** of

- Anterior (ventral) = **nearer** to the **front**
- Posterior (dorsal) = **nearer** to the **back**



- Superior = **nearer** to the **head (cephalic)**
- Inferior = **nearer** to the **feet (caudal)**



Activate Windows  
Go to Settings to activate Windows.

Activate Windows  
Go to Settings to activate Windows.