



Al-Mustaqbal University
College Of Engineering Technology
Department Of Cyber Security Techniques Engineering
Class: 1st
Subject: Drawing engineering
Lecturer: M.Sc. Afyaa Saad & M.Sc. Zahraa Hussein
1st term – Lecture 3:- Rectangle & Circle

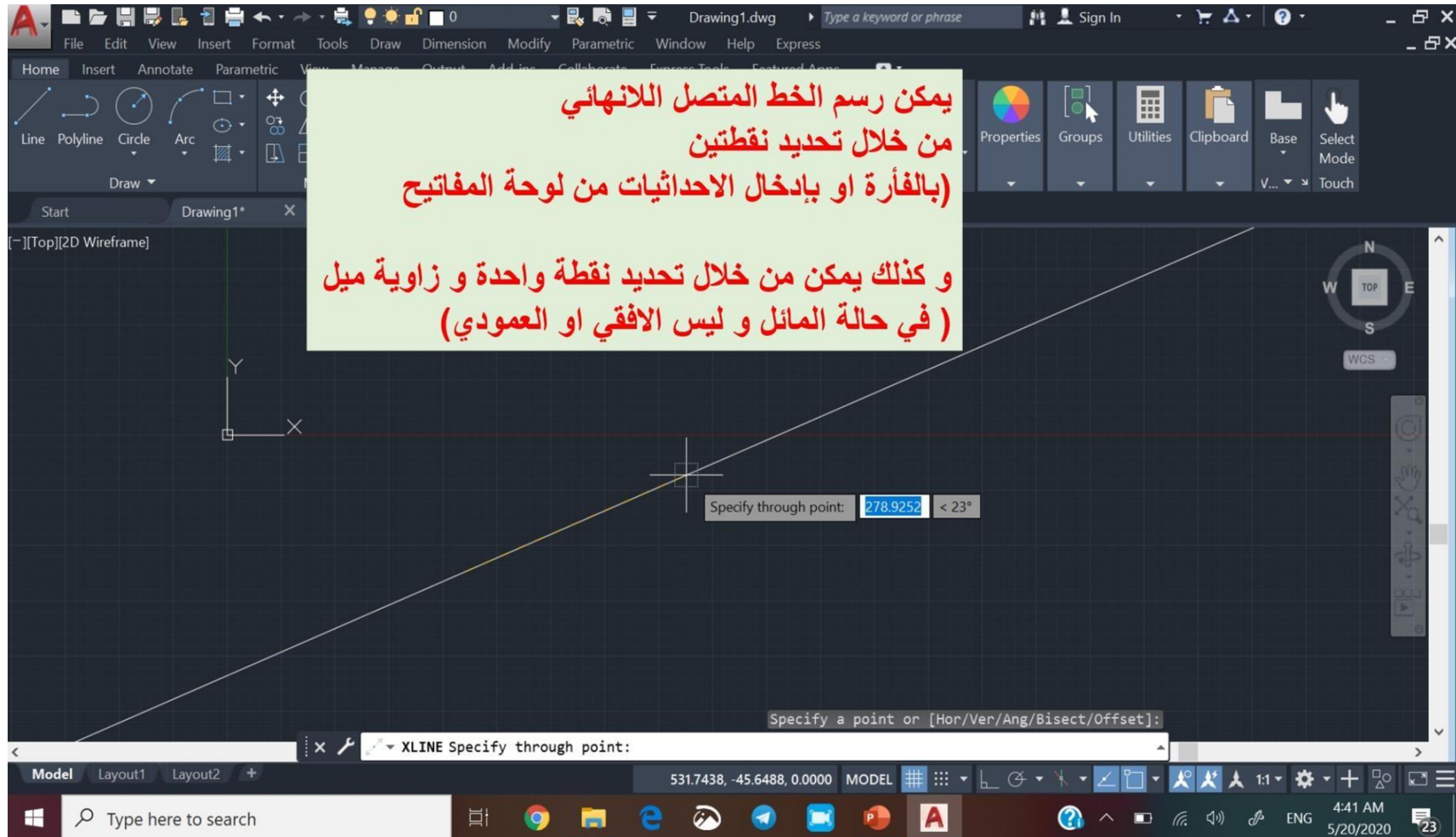
الكلية التقنية الهندسية

قسم هندسة تقنيات الامن السيبراني






Al-Mustaqbal University
 College Of Engineering Technology
 Department Of Cyber Security Techniques Engineering
 Class: 1st
 Subject: Drawing engineering
 Lecturer: M.Sc. Afyaa Saad & M.Sc. Zahraa Hussein
 1st term – Lecture 3:- Rectangle & Circle





Al-Mustaqbal University
 College Of Engineering Technology
 Department Of Cyber Security Techniques Engineering
 Class: 1st
 Subject: Drawing engineering
 Lecturer: M.Sc. Afyaa Saad & M.Sc. Zahraa Hussein
 1st term – Lecture 3:- Rectangle & Circle

Rectangle

Command Line	Rectangle or Rec ↩
Menu Bar	Draw → Rectangle
Draw Bar	

When enter rectangle command, the program require specify first corner:

Specify first corner point or [Chamfer/ Elevation / Fillet / Thickness / Width]:

Specify other corner Point:

1. **Chamfer, C** ↩ : the chamfer command enables to place a chamfer at the rectangle corner

Specify first chamfer distance for rectangles<0.000>: in x direction

Specify second chamfer distance for rectangles<0.000>: in y direction



2. **Fillet, F** ↩ : the fillet command creates both fillets and rounds on any combination of two lines.

Specify fillet radius for rectangles<0.000>:

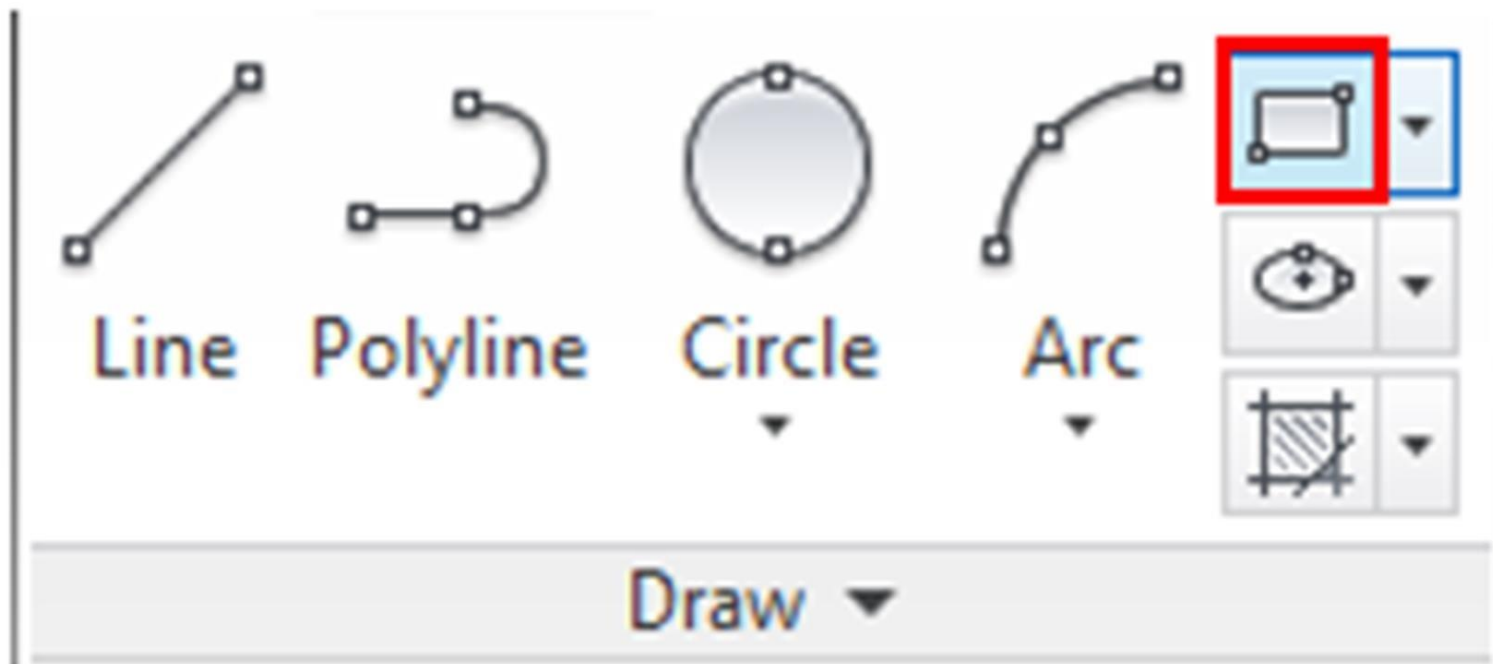




Al-Mustaqbal University
College Of Engineering Technology
Department Of Cyber Security Techniques Engineering
Class: 1st
Subject: Drawing engineering
Lecturer: M.Sc. Afyaa Saad & M.Sc. Zahraa Hussein
1st term – Lecture 3:- Rectangle & Circle

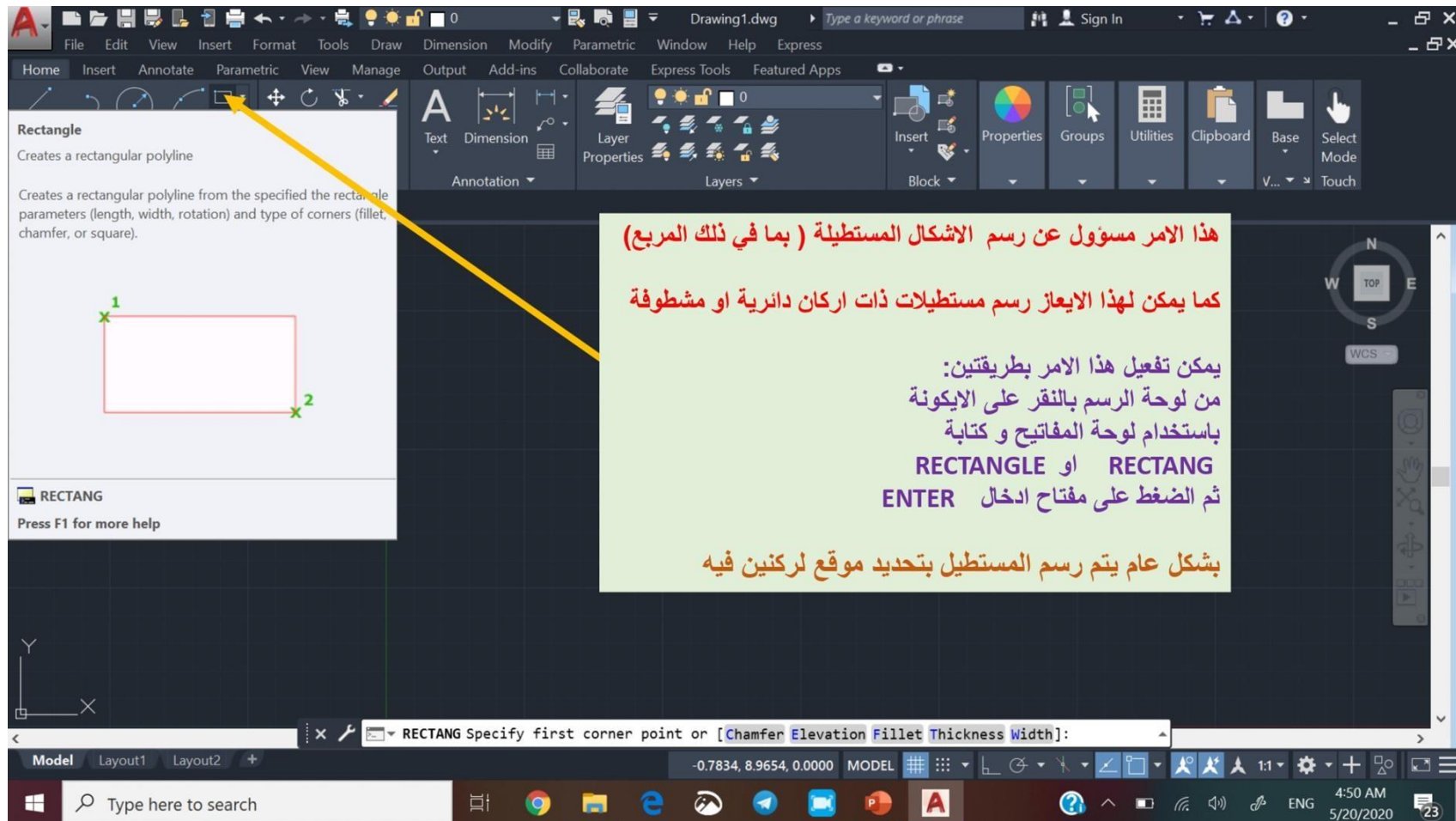
The **Rectangle** tool in AutoCAD creates a closed Polyline in the shape of a square or rectangle.

To create a **Rectangle**, from the Ribbon **Home** tab > **Draw** panel, click the **Rectangle** button.





Al-Mustaqbal University
College Of Engineering Technology
Department Of Cyber Security Techniques Engineering
Class: 1st
Subject: Drawing engineering
Lecturer: M.Sc. Afyaa Saad & M.Sc. Zahraa Hussein
1st term – Lecture 3:- Rectangle & Circle





Al-Mustaqbal University
 College Of Engineering Technology
 Department Of Cyber Security Techniques Engineering
 Class: 1st
 Subject: Drawing engineering
 Lecturer: M.Sc. Afyaa Saad & M.Sc. Zahraa Hussein
 1st term – Lecture 3:- Rectangle & Circle

No need to change
 لا داعي لتغيير هذا الإدخال

You can change the accuracy of display
 يمكنك تغيير دقة العرض على الشاشة من خلال زيادة المراتب بعد الفارزة

Units changed to (millimeters)

تم تغيير الوحدات و أصبحت بالمليمتر

ملاحظة: لا حاجة للوحدات أصلا في اوتوكاد الا في حالة النسخ من رسم الى اخر

A Drawing Units

Length
 Type: Decimal
 Precision: 0.0000

Angle
 Type: Decimal Degrees
 Precision: 0.00
☐ Clockwise

Insertion scale
 Units to scale inserted content: Millimeters

Sample Output
 1.5000,2.0039,0.0000
 3.0000<45.00,0.0000

Lighting
 Units for specifying the intensity of lighting: International

OK Cancel Direction... Help

Decimal Degrees for angles

استخدام النظام العشري يمكن تغيير النظام الى نظام الدرجات و الدقائق و الثواني او غير ذلك من أنظمة ادخال الزاوية

The digit after . Where increased to be two digits

تم زيادة عدد المراتب بعد الفارزة لزيادة دقة العرض بالنسبة للزاويا

Counterclockwise can be changes to Clockwise

اتجاه الزوايا عكس عقارب الساعة يمكن تغييره ليكون مع عقارب الساعة بالنقر على هذا المربع



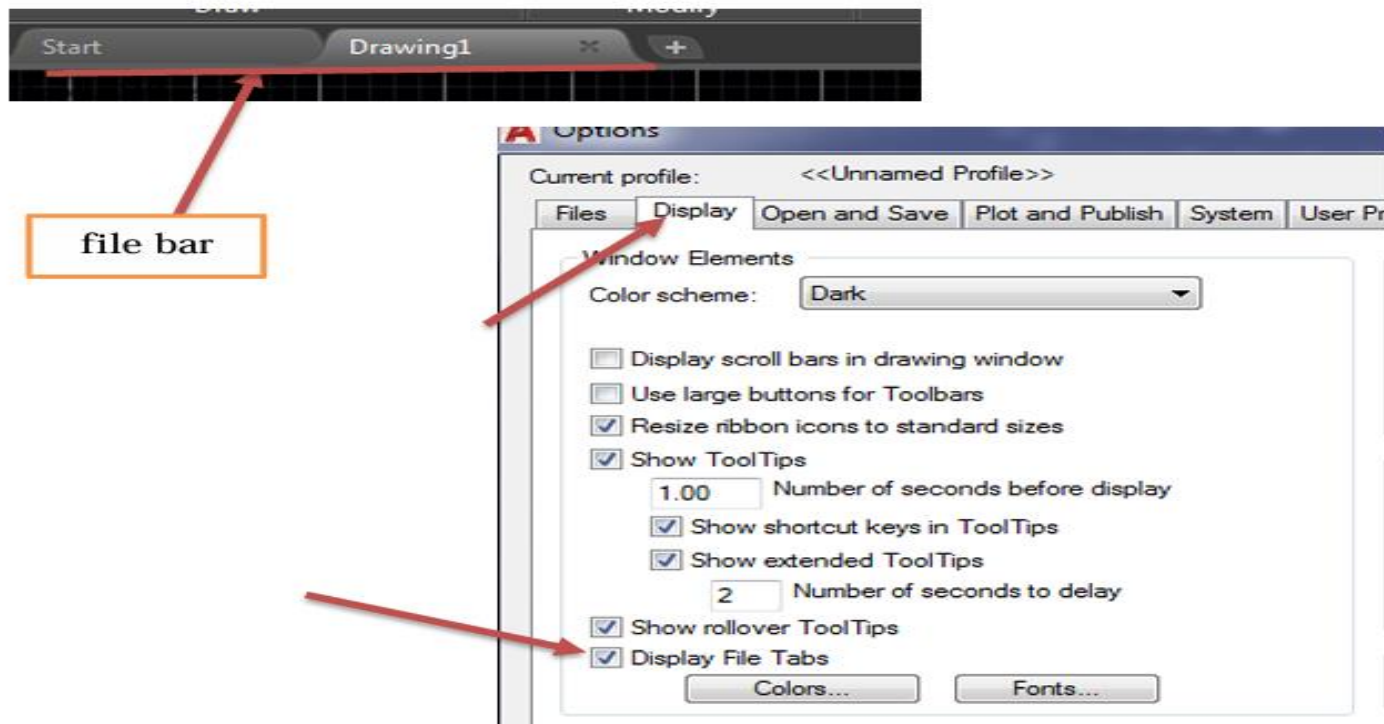
Al-Mustaqbal University
College Of Engineering Technology
Department Of Cyber Security Techniques Engineering
Class: 1st
Subject: Drawing engineering
Lecturer: M.Sc. Afyaa Saad & M.Sc. Zahraa Hussein
1st term – Lecture 3:- Rectangle & Circle

اظهار واخفاء اشربة برنامج الاوتوكاد (Show and hide AutoCAD bars)

- **File bar**

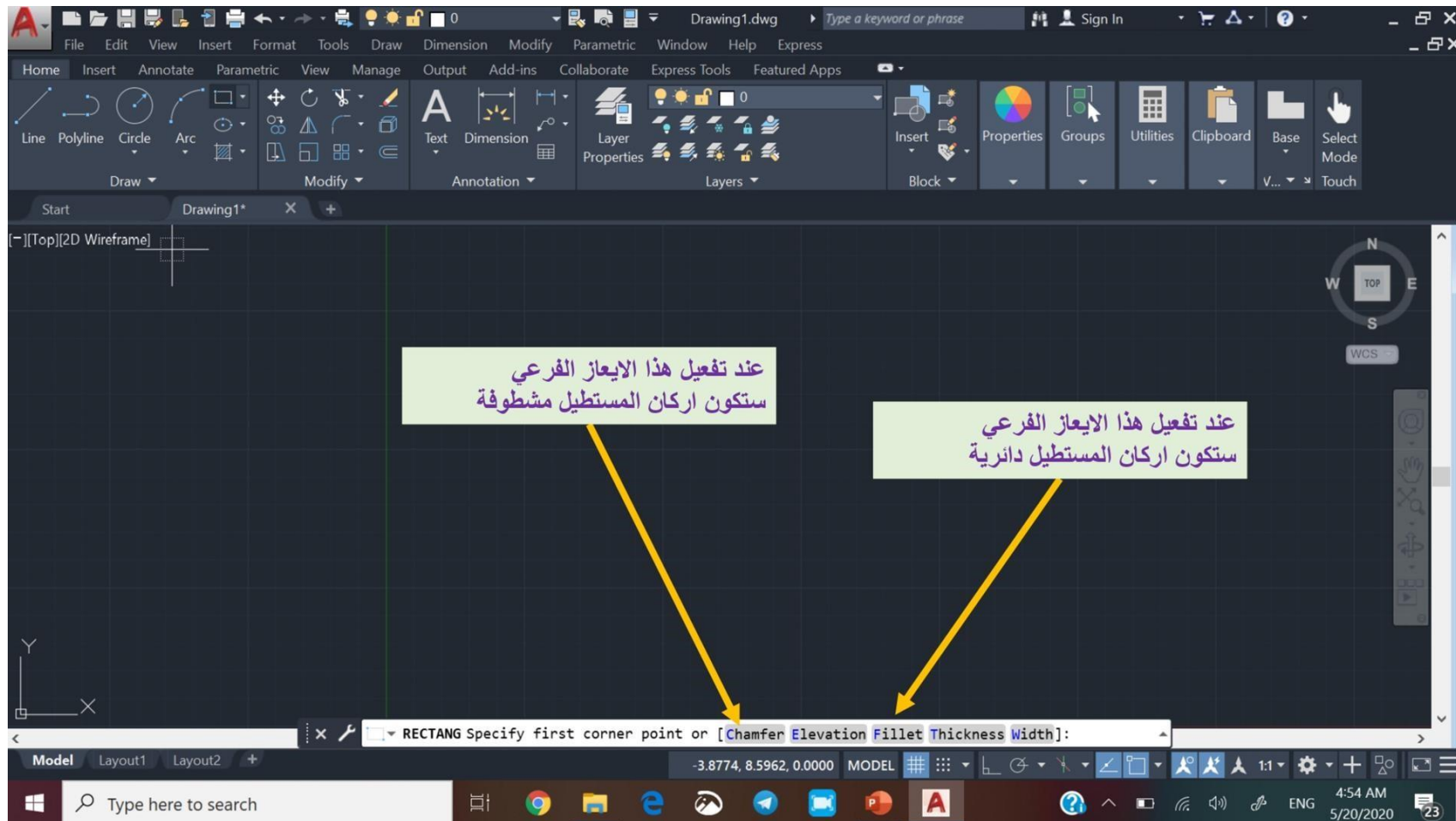
When file bar display then go to: option → Display → Display file bar

عند اختفاء file bar نضغط على الزر الأيمن للماوس ← خيار ← Display ←
يفعل خيار Display file bar



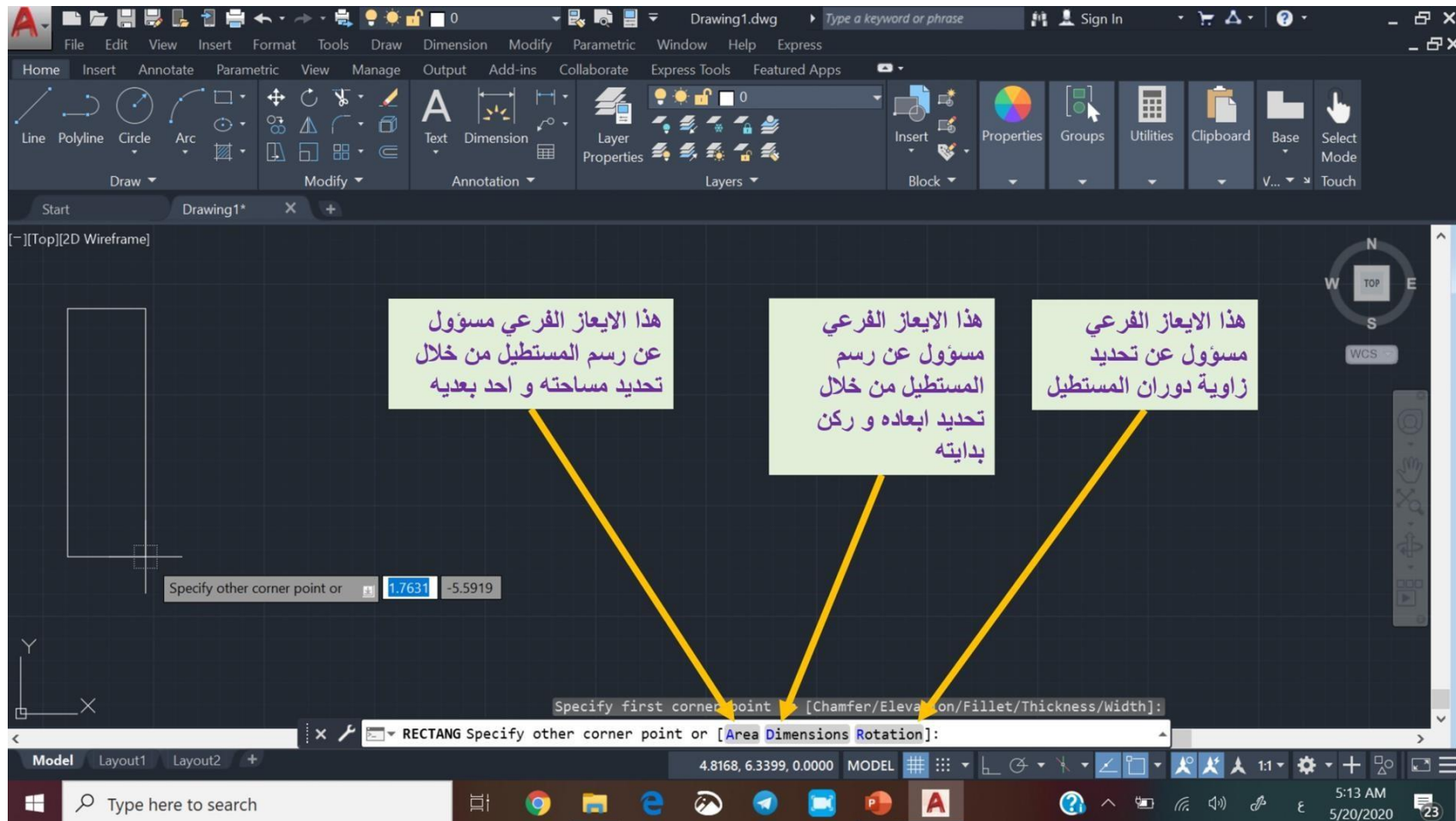


Al-Mustaqbal University
College Of Engineering Technology
Department Of Cyber Security Techniques Engineering
Class: 1st
Subject: Drawing engineering
Lecturer: M.Sc. Afyaa Saad & M.Sc. Zahraa Hussein
1st term – Lecture 3:- Rectangle & Circle



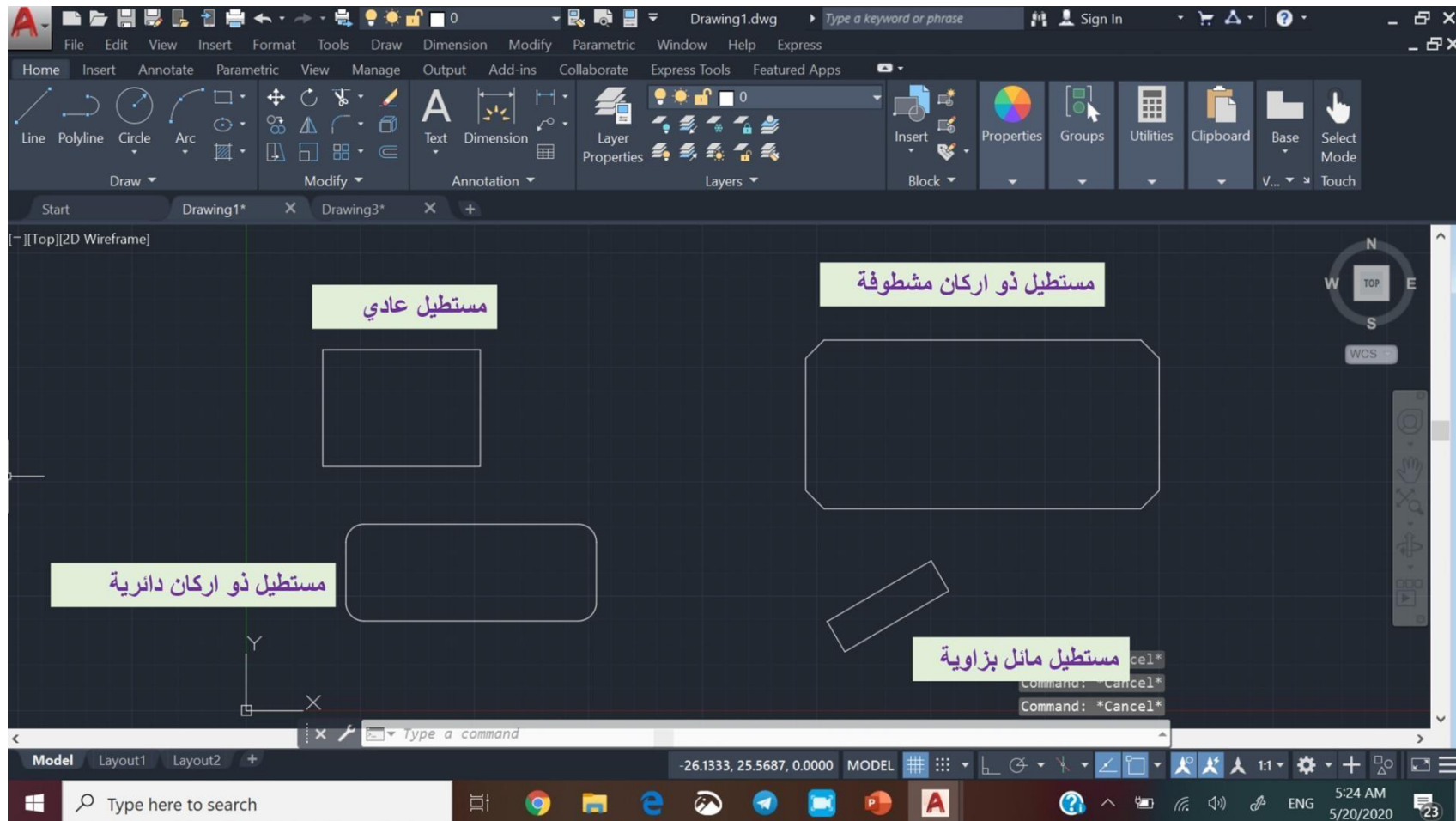


Al-Mustaqbal University
 College Of Engineering Technology
 Department Of Cyber Security Techniques Engineering
 Class: 1st
 Subject: Drawing engineering
 Lecturer: M.Sc. Afyaa Saad & M.Sc. Zahraa Hussein
 1st term – Lecture 3:- Rectangle & Circle





Al-Mustaqbal University
 College Of Engineering Technology
 Department Of Cyber Security Techniques Engineering
 Class: 1st
 Subject: Drawing engineering
 Lecturer: M.Sc. Afyaa Saad & M.Sc. Zahraa Hussein
 1st term – Lecture 3:- Rectangle & Circle





Al-Mustaqbal University
College Of Engineering Technology
Department Of Cyber Security Techniques Engineering
Class: 1st
Subject: Drawing engineering
Lecturer: M.Sc. Afyaa Saad & M.Sc. Zahraa Hussein
1st term – Lecture 3:- Rectangle & Circle

Circle

Drawing circles is one of the important commands that can be accessed through several Options are Through the **Ribbon bar**, we choose the command (**circle**).

From the drop -down menu bar, we choose the **Draw** menu and choose the **Circle** command.

By typing the shortcut (**C**) in the command bar

When you click on **Circle**, several options will appear, as follows:

Center, Radius

This command is used to draw a circle by selecting the center point and the radius length.

Center, Diameter

This command is used to draw a circle by selecting the center point and the diameter length.



Al-Mustaqbal University
College Of Engineering Technology
Department Of Cyber Security Techniques Engineering
Class: 1st
Subject: Drawing engineering
Lecturer: M.Sc. Afyaa Saad & M.Sc. Zahraa Hussein
1st term – Lecture 3:- Rectangle & Circle

To start the command Circle: لتفعيل امر رسم الدائرة

1. Select the command from the draw panel
اختر الامر من لوحة الرسم كما مشار اليه في السهم
2. Type Circle or C in the command bar then ENTER
اكتب الكلمة او اول حرف ثم اضغط انتر (الدخال)

بعد تفعيل الامر يمكن رسم الدائرة بعدة طرق:

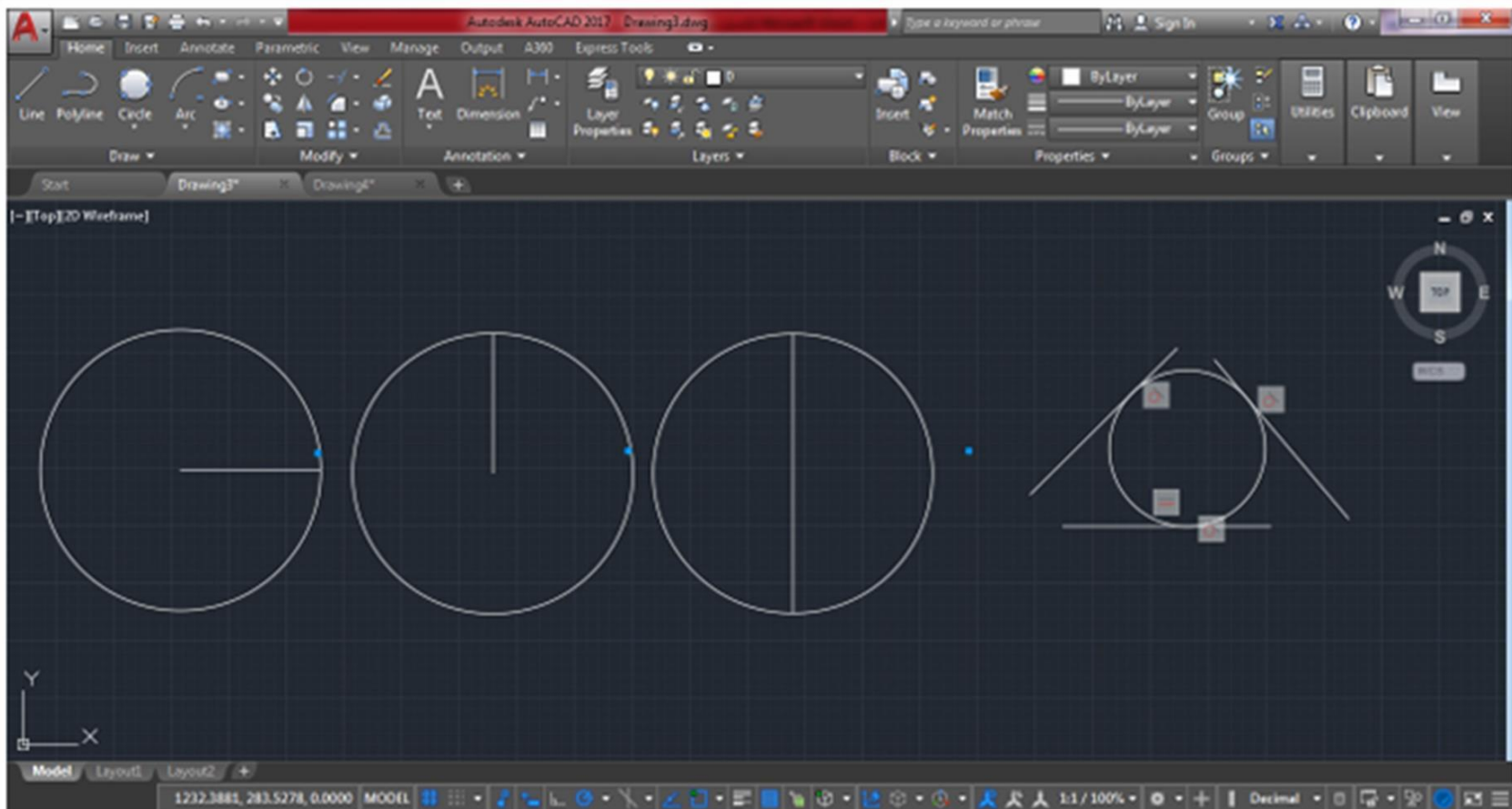
1. من خلال تحديد مركز الدائرة و نصف قطرها باستخدام الفارة و/ او لوحة المفاتيح
2. من خلال تحديد مركز الدائرة و قطرها باستخدام الفارة و/ او لوحة المفاتيح
3. من خلال تحديد نقطتين
4. من خلال تحديد ثلاث نقاط
5. من خلال تحديد مماسين و نصف قطر الدائرة
6. من خلال تحديد ثلاث مماسات

في كل الأحوال يجب الضغط على مفتاح انتر (الدخال) لتنفيذ الامر

ملاحظة: يقوم اوتوكاد بفتح خط جديد حتى بعد رسم الخط الأول: فإذا اردت إيقاف الامر : اضغط Escape



Al-Mustaqbal University
College Of Engineering Technology
Department Of Cyber Security Techniques Engineering
Class: 1st
Subject: Drawing engineering
Lecturer: M.Sc. Afyaa Saad & M.Sc. Zahraa Hussein
1st term – Lecture 3:- Rectangle & Circle





Al-Mustaqbal University
College Of Engineering Technology
Department Of Cyber Security Techniques Engineering
Class: 1st
Subject: Drawing engineering
Lecturer: M.Sc. Afyaa Saad & M.Sc. Zahraa Hussein
1st term – Lecture 3:- Rectangle & Circle



Al-Mustaqbal University
College Of Engineering Technology
Department Of Cyber Security Techniques Engineering
Class: 1st
Subject: Drawing engineering
Lecturer: M.Sc. Afyaa Saad & M.Sc. Zahraa Hussein
1st term – Lecture 3:- Rectangle & Circle