



Al-Mustaqbal University
College Of Engineering Technology
Department Of Cyber Security Techniques Engineering
Class: 1st
Subject: Drawing engineering
Lecturer: M.Sc. Afyaa Saad & M.Sc. Zahraa Hussein
1st term – Lecture 2:- Settings AutoCAD

الكلية التقنية الهندسية

قسم هندسة تقنيات الامن السيبراني





Al-Mustaqbal University
 College Of Engineering Technology
 Department Of Cyber Security Techniques Engineering
 Class: 1st
 Subject: Drawing engineering
 Lecturer: M.Sc. Afyaa Saad & M.Sc. Zahraa Hussein
 1st term – Lecture 2:- Settings AutoCAD

**To setup the units:
 Follow the path:
 Drawing Utilities -> Units -> Enter**

ضبط وحدات الرسم:
 من ايقونة الوصول السريع
 كما مبين في الصورة
 بعد ذلك اضغط انتر (ادخال)

يتيح هذا الضبط:
 التحكم في الوحدات
 التحكم في الدقة (عدد المراتب بعد الفارزة)
 التحكم في كيفية ادخال الزاوية

ملاحظة: الضبط خاص بما تشاهده اثناء الرسم اما القيم الحقيقية فهي كما تدخلها كما سيتم توضيح ذلك في الفيديو

Active Grid
 دائما اجعل الشبكة الخلفية فعالة
 (انقر عليها فتتفعل انقر مرة أخرى فتختفي)



Al-Mustaqbal University
College Of Engineering Technology
Department Of Cyber Security Techniques Engineering
Class: 1st
Subject: Drawing engineering
Lecturer: M.Sc. Afyaa Saad & M.Sc. Zahraa Hussein
1st term – Lecture 2:- Settings AutoCAD

The screenshot shows the AutoCAD interface with the 'Drawing Units' dialog box open. The dialog box has tabs for Length, Angle, Insertion scale, Sample Output, and Lighting. The Length tab is active, showing 'Type: Decimal', 'Precision: 0.0000', and 'Units to scale inserted content: Inches'. The Angle tab shows 'Type: Decimal Degrees', 'Precision: 0', and 'Clockwise' checked. The Insertion scale tab shows 'Units to scale inserted content: Inches'. The Sample Output tab shows '1.5000,2.0039,0.0000' and '3.0000-45,0.0000'. The Lighting tab shows 'Units for specifying the intensity of lighting: International'. The command line at the bottom shows the command '_UNITS' entered. A yellow arrow points from the command line to the 'Drawing Units' dialog box. Another yellow arrow points from the 'Drawing Units' dialog box to the command line. A third yellow arrow points from the 'Drawing Units' dialog box to the 'Units' property in the Properties palette on the right.

**After press (Enter) :
This menu appears**

**You can present this
menu by typing (UNITS) in
command bar then press
ENTER**

**بعد الضغط على مفتاح انتر (ادخال):
تظهر هذه القائمة**

**ملاحظة يمكن الوصول الى هذه
القائمة من خلال شريط الاوامر
مباشرة و ذلك بكتابة كلمة
units
ثم الضغط على مفتاح انتر (ادخال)
و هذا هو شريط الاوامر**



Al-Mustaqbal University
 College Of Engineering Technology
 Department Of Cyber Security Techniques Engineering
 Class: 1st
 Subject: Drawing engineering
 Lecturer: M.Sc. Afyaa Saad & M.Sc. Zahraa Hussein
 1st term – Lecture 2:- Settings AutoCAD

This is the default inputs
You can make any
suitable changes

See the video

for LENGTH
 للأطوال

4 digits after the .
Means high accuracy
 اربع مراتب بعد الفارزة
 (دقة عالية)

Units (inches)
 الوحدات بالانج
 يمكن تغييرها حسب الرغبة

ملاحظة: لا حاجة للوحدات أصلا
 في اوتوكاد الا في حالة النسخ من
 رسم الى اخر

هذه الادخالات الافتراضية و
 يمكنك تغييرها حسب الحاجة
 و سيتضح ذلك في الفيديو

for
ANGLES
 للأطوال

No digits
 لا مراتب بعد الفارزة
 (دقة العرض اقل)

لاحظ هذه دقة العرض (ما
 تراه على الشاشة اثناء الرسم
 فقط)

و لكن دقة القياس كما هي و
 حسب ما ادخلتها

شاهد الفيديو



Al-Mustaqbal University
College Of Engineering Technology
Department Of Cyber Security Techniques Engineering
Class: 1st
Subject: Drawing engineering
Lecturer: M.Sc. Afyaa Saad & M.Sc. Zahraa Hussein
1st term – Lecture 2:- Settings AutoCAD

No need to change

لا داعي لتغيير هذا الإدخال

You can change the accuracy of display

يمكنك تغيير دقة العرض على الشاشة من خلال زيادة المراتب بعد الفارزة

Units changed to (millimeters)

تم تغيير الوحدات و أصبحت بالمليمتر

ملاحظة: لا حاجة للوحدات أصلا في اوتوكاد الا في حالة النسخ من رسم الى اخر

Decimal Degrees for angles

استخدام النظام العشري يمكن تغيير النظام الى نظام الدرجات و الدقائق و الثواني او غير ذلك من أنظمة ادخال الزاوية

The digit after . Where increased to be two digits

تم زيادة عدد المراتب بعد الفارزة لزيادة دقة العرض بالنسبة للزاويا

Counterclockwise can be changes to Clockwise

اتجاه الزوايا عكس عقارب الساعة يمكن تغييره ليكون مع عقارب الساعة بالنقر على هذا المربع



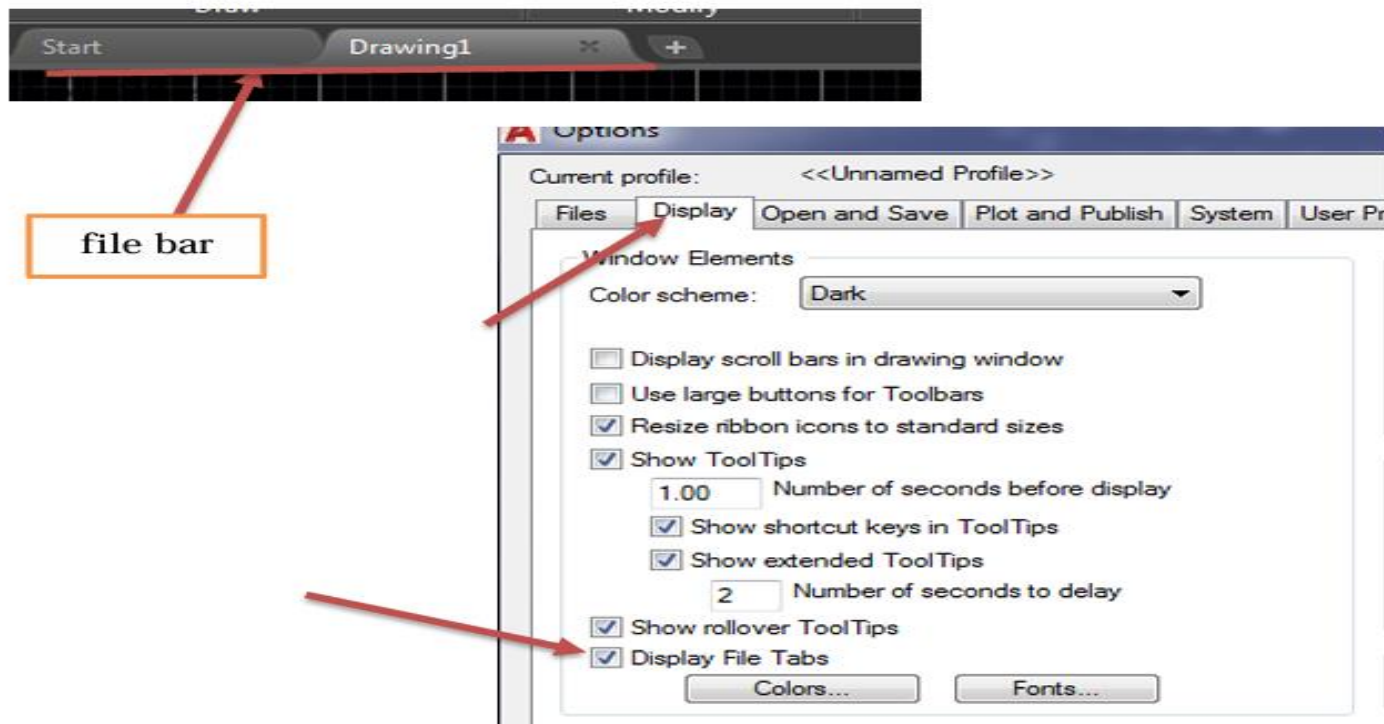
Al-Mustaqbal University
College Of Engineering Technology
Department Of Cyber Security Techniques Engineering
Class: 1st
Subject: Drawing engineering
Lecturer: M.Sc. Afyaa Saad & M.Sc. Zahraa Hussein
1st term – Lecture 2:- Settings AutoCAD

اظهار واخفاء اشربة برنامج الاوتوكاد (Show and hide AutoCAD bars)

- **File bar**

When file bar display then go to: option → Display → Display file bar

عند اختفاء file bar نضغط على الزر الأيمن للماوس ← خيار ← Display ←
يفعل خيار Display file bar





Al-Mustaqbal University
 College Of Engineering Technology
 Department Of Cyber Security Techniques Engineering
 Class: 1st
 Subject: Drawing engineering
 Lecturer: M.Sc. Afyaa Saad & M.Sc. Zahraa Hussein
 1st term – Lecture 2:- Settings AutoCAD

• Menu bar

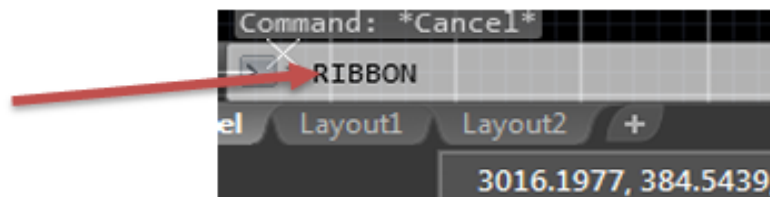
(من السهم المنسدل موضح في الصورة نختار) From the drop-down arrow shown in the image, we choose **Show menu bar/or Hide Menu bar**



• Ribbon bar

-Write **Ribbon** in command bar and then chose Ribbon to show or chose RibbonClose to disappear the bar.

- Or (**Ctrl+0**) to show ribbon



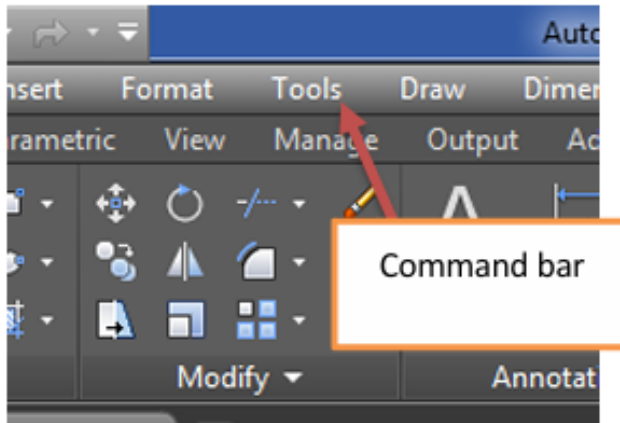


Al-Mustaqbal University
College Of Engineering Technology
Department Of Cyber Security Techniques Engineering
Class: 1st
Subject: Drawing engineering
Lecturer: M.Sc. Afyaa Saad & M.Sc. Zahraa Hussein
1st term – Lecture 2:- Settings AutoCAD

- **Command bar**

- To show the Command bar press (**Ctrl+9**)

Or from **Tool** → Command bar



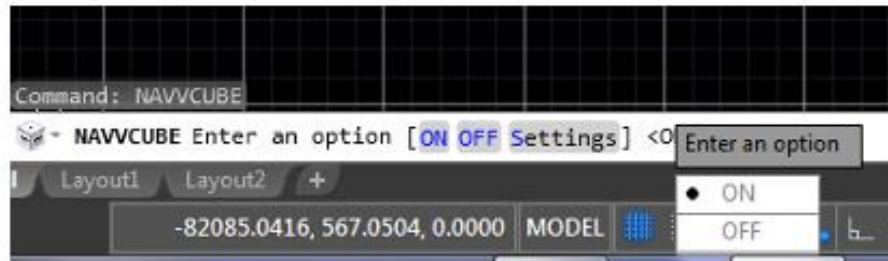
- **Navigation bar**

-To show/Hide the **Navigation view cube** write (**Navvcube**) in command bar then press **ON** to show and **OFF** to hide.

-To show/Hide the **Navigation bar** write (**Navvbar**) in command bar then press **ON** to show and **OFF** to hide.



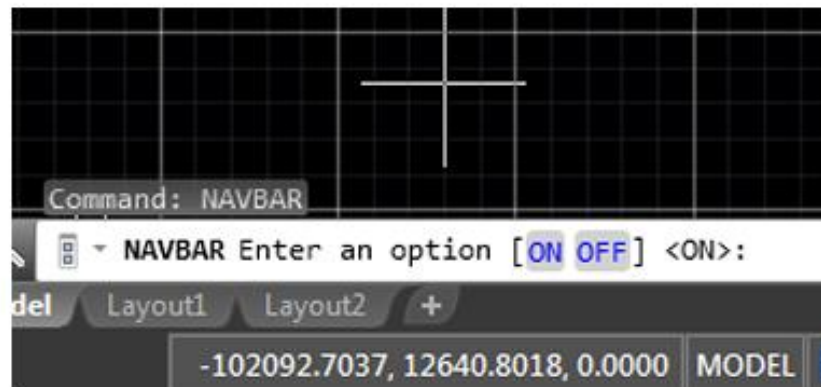
Al-Mustaqbal University
 College Of Engineering Technology
 Department Of Cyber Security Techniques Engineering
 Class: 1st
 Subject: Drawing engineering
 Lecturer: M.Sc. Afyaa Saad & M.Sc. Zahraa Hussein
 1st term – Lecture 2:- Settings AutoCAD



Navigation view
cube



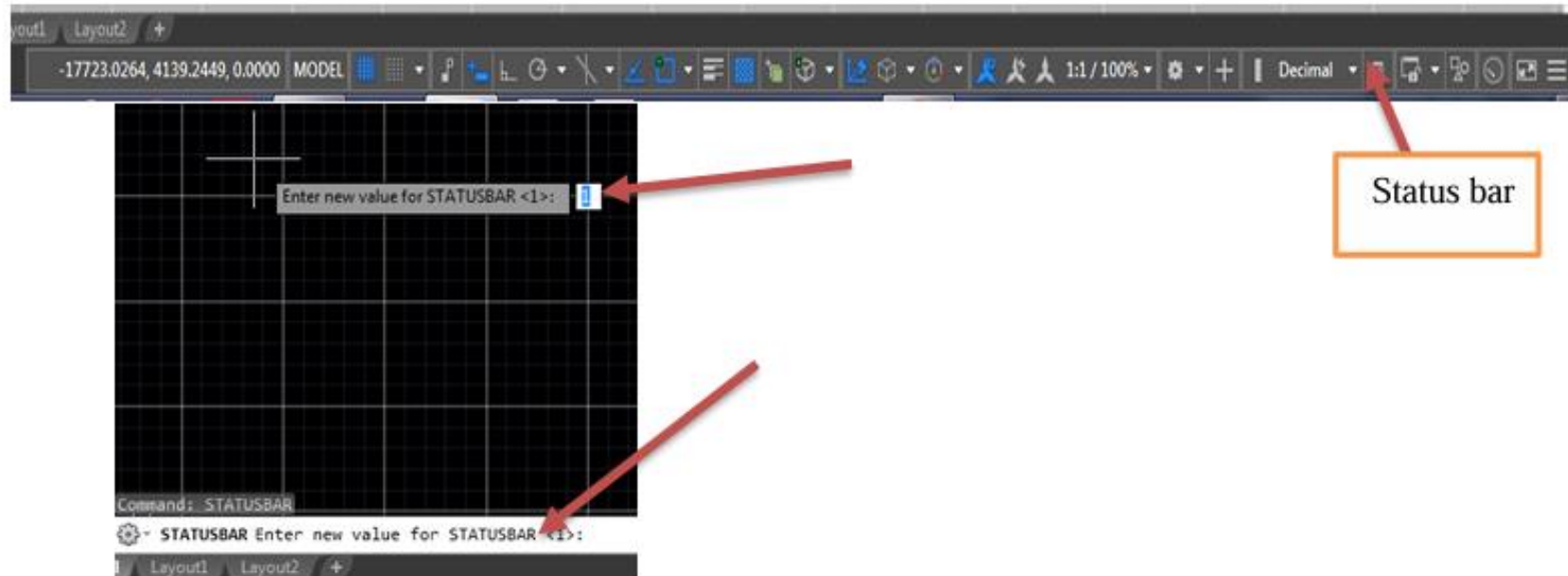
Navigation
bar





- **Status bar**

- Write **statusbar** in command bar and then write (**0**) to disappear this bar
- To show the bar again also write **statusbar** in command bar and then write (**1**)



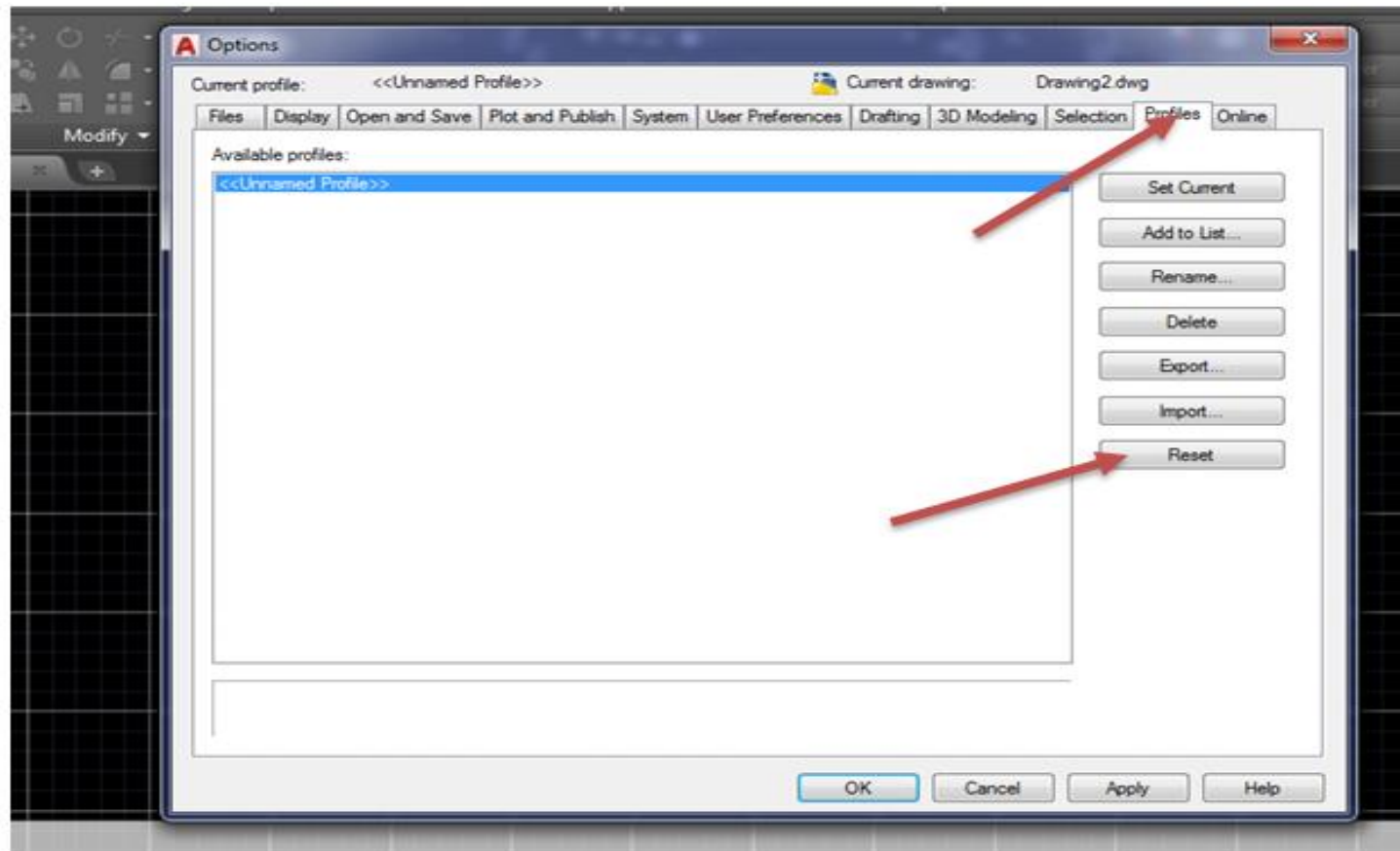


Al-Mustaqbal University
 College Of Engineering Technology
 Department Of Cyber Security Techniques Engineering
 Class: 1st
 Subject: Drawing engineering
 Lecturer: M.Sc. Afyaa Saad & M.Sc. Zahraa Hussein
 1st term – Lecture 2:- Settings AutoCAD

Note: Completely reset the program and return it to its previous state:

(إعادة ضبط البرنامج بصورة كاملة واعادته الى سابق):

Right Click → Option → Profile → Reset

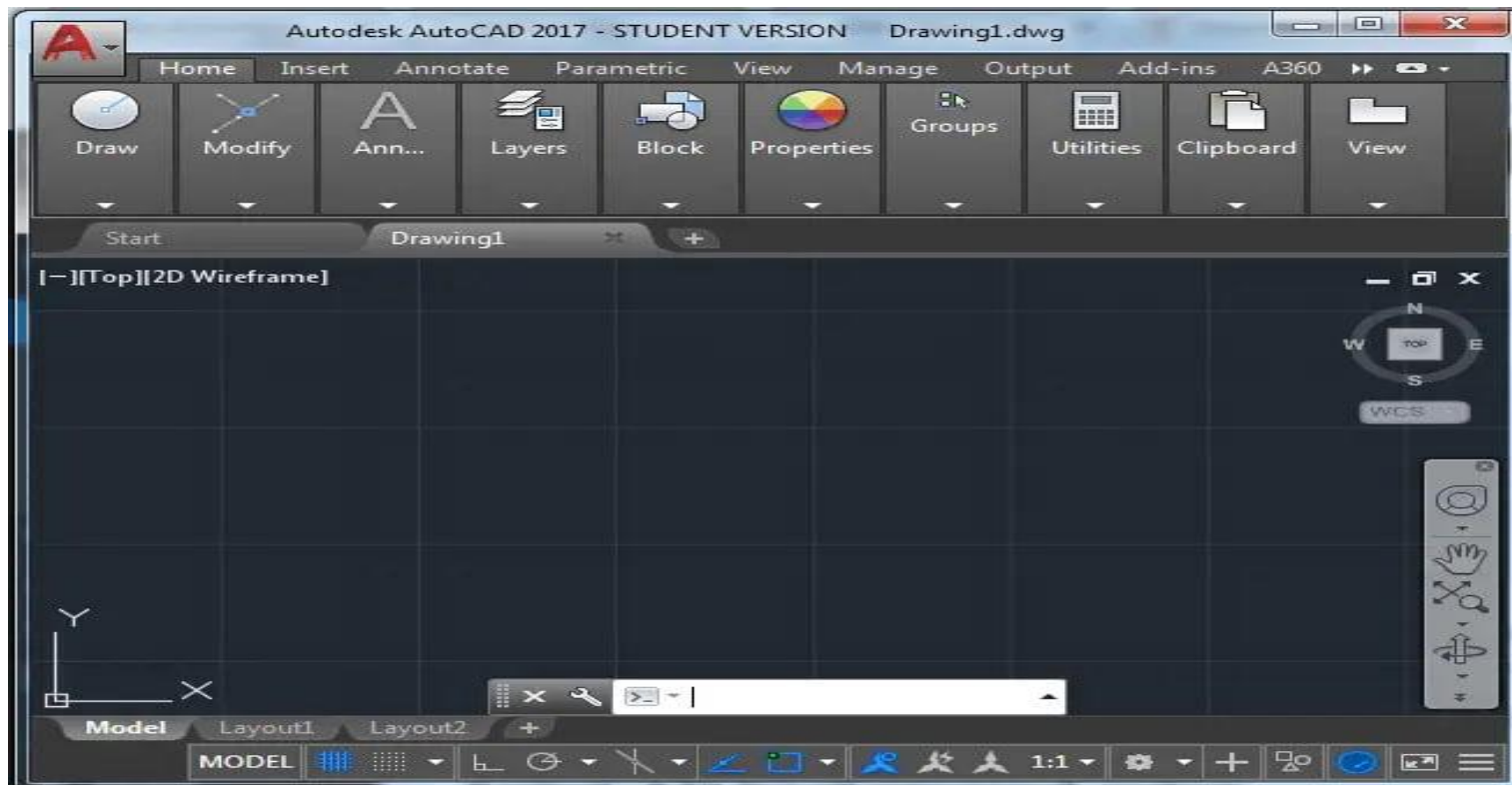




Al-Mustaqbal University
College Of Engineering Technology
Department Of Cyber Security Techniques Engineering
Class: 1st
Subject: Drawing engineering
Lecturer: M.Sc. Afyaa Saad & M.Sc. Zahraa Hussein
1st term – Lecture 2:- Settings AutoCAD

Change the background color in AutoCAD

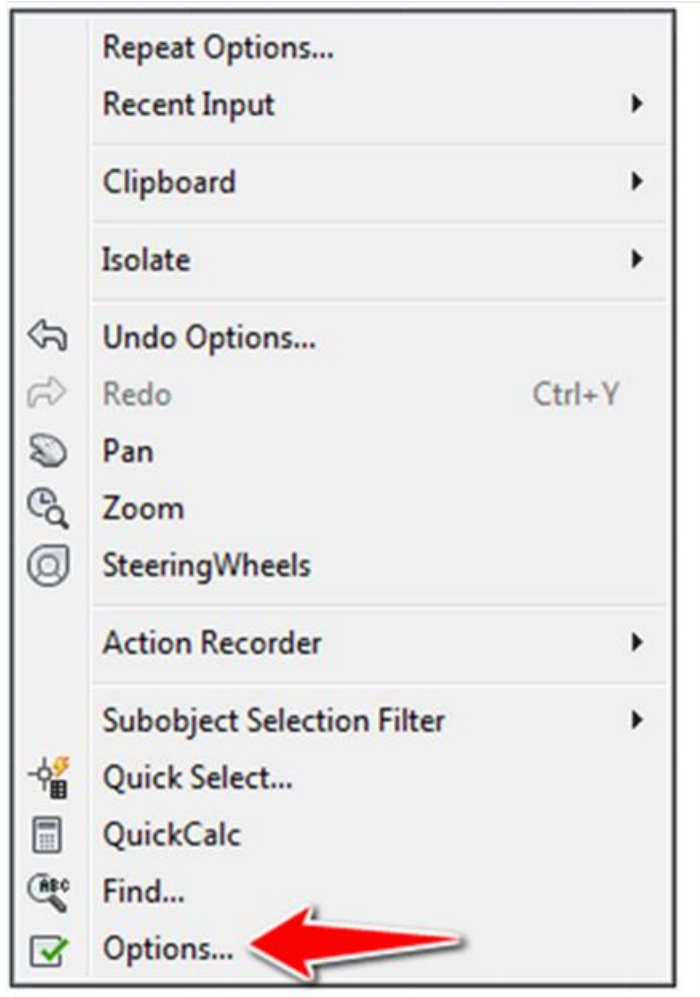
When you install AutoCAD, the default color is gray-black. This is the background I feel most comfortable using these days.





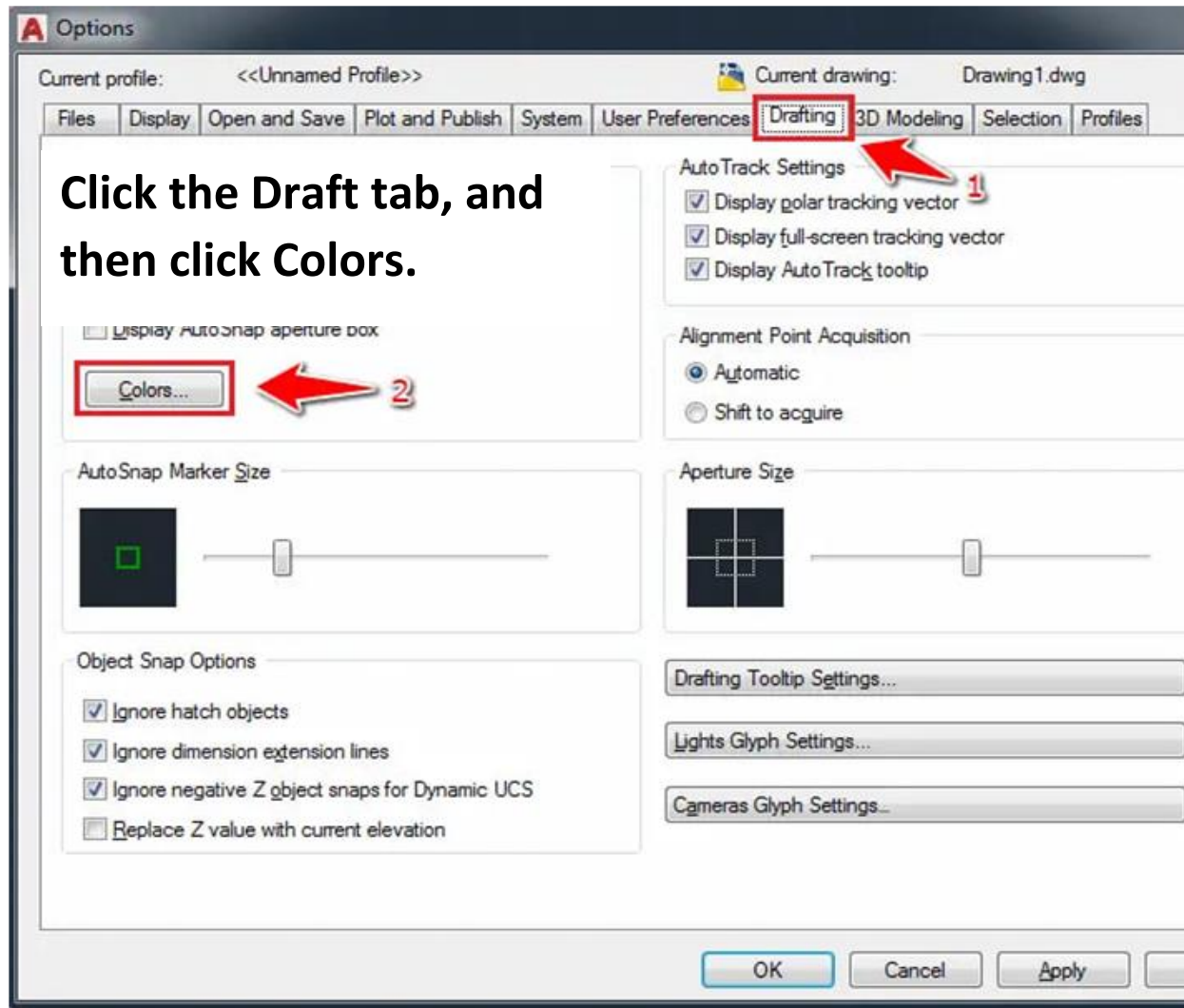
Al-Mustaqbal University
College Of Engineering Technology
Department Of Cyber Security Techniques Engineering
Class: 1st
Subject: Drawing engineering
Lecturer: M.Sc. Afyaa Saad & M.Sc. Zahraa Hussein
1st term – Lecture 2:- Settings AutoCAD

Change AutoCAD background to black



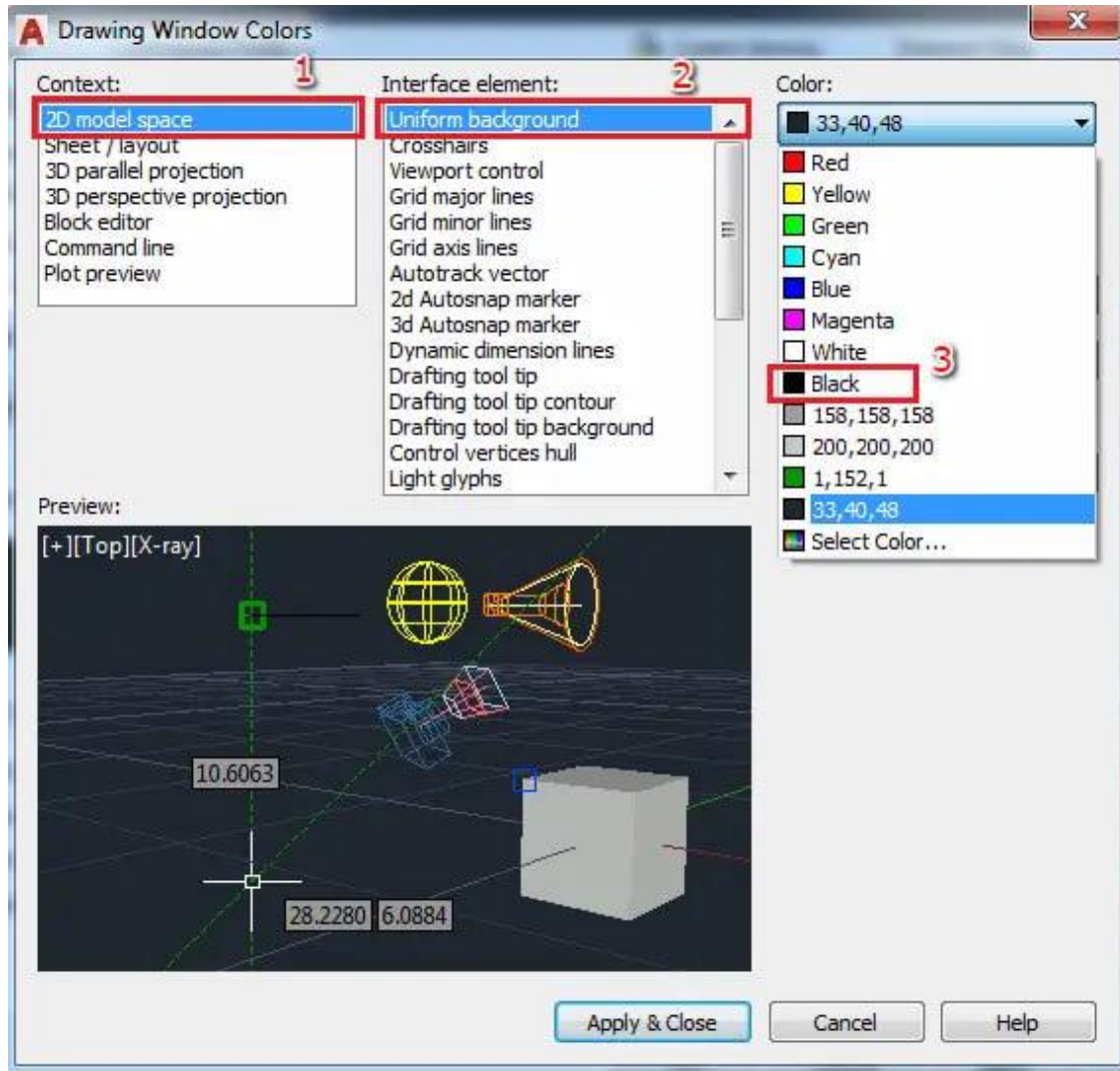


Al-Mustaqbal University
 College Of Engineering Technology
 Department Of Cyber Security Techniques Engineering
 Class: 1st
 Subject: Drawing engineering
 Lecturer: M.Sc. Afyaa Saad & M.Sc. Zahraa Hussein
 1st term – Lecture 2:- Settings AutoCAD





Al-Mustaqbal University
 College Of Engineering Technology
 Department Of Cyber Security Techniques Engineering
 Class: 1st
 Subject: Drawing engineering
 Lecturer: M.Sc. Afyaa Saad & M.Sc. Zahraa Hussein
 1st term – Lecture 2:- Settings AutoCAD



Select

- 1. 2D model area**
- 2. Uniform background**
- 3. Select black as**
- 4. Drop down color**
- 5. Click Apply and Close**



Al-Mustaqbal University
 College Of Engineering Technology
 Department Of Cyber Security Techniques Engineering
 Class: 1st
 Subject: Drawing engineering
 Lecturer: M.Sc. Afyaa Saad & M.Sc. Zahraa Hussein
 1st term – Lecture 2:- Settings AutoCAD

Save the drawing as an AutoCAD file

1. Click File > Save As.
2. Choose a location and folder to save the file.
3. When the Save As dialog box appears, change the Save as type drop-down list to
4. either AutoCAD Drawing (*.dwg) or AutoCAD Drawing (*.dwg).
5. Click Save.

